



MMP8 (Cleaved-Leu101) rabbit pAb

Catalog No	BYab-02314
Isotype	IgG
Reactivity	Human;Mouse;Rat
Applications	WB;IHC
Gene Name	MMP8 CLG1
Protein Name	MMP8 (Cleaved-Leu101)
Immunogen	Synthesized peptide derived from human MMP8 (Cleaved-Leu101)
Specificity	This antibody detects endogenous levels of Human,Mouse,Rat MMP8 (Cleaved-Leu101, protein was cleaved amino acid sequence between 100-101)
Formulation	Liquid in PBS containing 50% glycerol, 0.5% BSA and 0.02% sodium azide.
Source	Polyclonal, Rabbit,IgG
Purification	The antibody was affinity-purified from rabbit serum by affinity-chromatography using specific immunogen.
Dilution	WB 1:500-2000;IHC-p 1:50-300
Concentration	1 mg/ml
Purity	≥90%
Storage Stability	-20°C/1 year
Synonyms	Neutrophil collagenase (EC 3.4.24.34;Matrix metalloproteinase-8;MMP-8;PMNL collagenase;PMNL-CL)
Observed Band	40 53kD
Cell Pathway	Cytoplasmic granule. Secreted, extracellular space, extracellular matrix . Stored in intracellular granules.
Tissue Specificity	Neutrophils.
Function	skeletal system development, ossification, proteolysis, collagen catabolic process, collagen metabolic process,multicellular organismal metabolic process, multicellular organismal catabolic process, multicellular organismal macromolecule metabolic process, bone development,
Background	catalytic activity: Cleavage of interstitial collagens in the triple helical domain. Unlike EC 3.4.24.7, this enzyme cleaves type III collagen more slowly than type I.,cofactor: Binds 2 zinc ions per subunit.,cofactor: Binds 3 calcium ions per subunit.,domain: The conserved cysteine present in the cysteine-switch motif binds the catalytic zinc ion, thus inhibiting the enzyme. The dissociation of the cysteine from the zinc ion upon the activation-peptide release activates the

Nanjing BYabscience technology Co.,Ltd



enzyme.,enzyme regulation:Cannot be activated without removal of the activation peptide.,function:Can degrade fibrillar type I, II, and III collagens.,similarity:Belongs to the peptidase M10A family.,similarity:Contains 4 hemopexin-like domains.,subcellular location:Stored in intracellular granules.,tissue specificity:Neutrophils.,

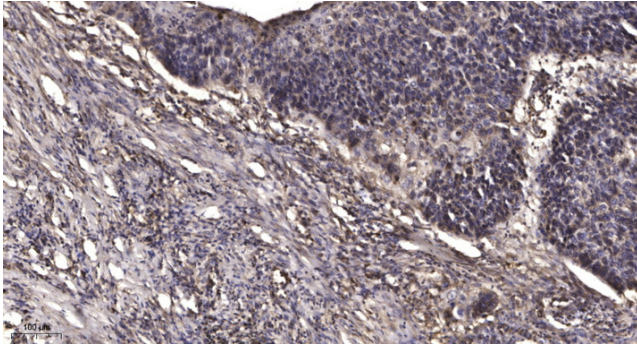
matters needing attention

Avoid repeated freezing and thawing!

Usage suggestions

This product can be used in immunological reaction related experiments. For more information, please consult technical personnel.

Products Images



Immunohistochemical analysis of paraffin-embedded human Squamous cell carcinoma of lung. 1, Antibody was diluted at 1:200(4° overnight). 2, Tris-EDTA,pH9.0 was used for antigen retrieval. 3,Secondary antibody was diluted at 1:200(room temperature, 45min).