



MMP19 (Cleaved-Tyr98) rabbit pAb

Catalog No	BYab-02312
Isotype	IgG
Reactivity	Human;Mouse
Applications	WB;IHC
Gene Name	MMP19 MMP18 RASI
Protein Name	MMP19 (Cleaved-Tyr98)
Immunogen	Synthesized peptide derived from human MMP19 (Cleaved-Tyr98)
Specificity	This antibody detects endogenous levels of Human,Mouse MMP19 (Cleaved-Tyr98, protein was cleaved amino acid sequence between 97-98)
Formulation	Liquid in PBS containing 50% glycerol, 0.5% BSA and 0.02% sodium azide.
Source	Polyclonal, Rabbit,IgG
Purification	The antibody was affinity-purified from rabbit serum by affinity-chromatography using specific immunogen.
Dilution	WB 1:500-2000;IHC-p 1:50-300
Concentration	1 mg/ml
Purity	≥90%
Storage Stability	-20°C/1 year
Synonyms	Matrix metalloproteinase-19 (MMP-19;EC 3.4.24.-;Matrix metalloproteinase RASI;Matrix metalloproteinase-18;MMP-18)
Observed Band	45 55kD
Cell Pathway	Secreted, extracellular space, extracellular matrix .
Tissue Specificity	Expressed in mammary gland, placenta, lung, pancreas, ovary, small intestine, spleen, thymus, prostate, testis colon, heart and blood vessel walls. Not detected in brain and peripheral blood leukocytes. Also expressed in the synovial fluid of normal and rheumatoid patients (PubMed:8920941).
Function	angiogenesis, blood vessel development, vasculature development, proteolysis, collagen catabolic process, collagen metabolic process, multicellular organismal metabolic process, multicellular organismal catabolic process, multicellular organismal macromolecule metabolic process, blood vessel morphogenesis,
Background	alternative products:Additional isoforms seem to exist,catalytic activity:Cleaves aggrecan at the 360-Ser- -Phe-361 site.,cofactor:Binds 1 zinc ion per subunit.,cofactor:Calcium.,disease:May play a role in pathological processes

Nanjing BYabscience technology Co.,Ltd



participating in rheumatoid arthritis (RA)-associated joint tissue destruction. Autoantigen anti-MMP19 are frequent in RA patients.,domain:The conserved cysteine present in the cysteine-switch motif binds the catalytic zinc ion, thus inhibiting the enzyme. The dissociation of the cysteine from the zinc ion upon the activation-peptide release activates the enzyme.,enzyme regulation:Strongly inhibited by TIMP-2, TIMP-3 and TIMP-4, while TIMP-1 is less efficient.,function:Endopeptidase that degrades various components of the extracellular matrix, such as aggrecan and cartilage oligomeric matrix protein (comp), during development, haemostasis and pathological conditions (arthritic disease). May also play a role in neovascularization or angiogenesis. Hydrolyzes collagen type IV, laminin, nidogen, nascin-C isoform, fibronectin, and type I gelatin.,PTM:Activated by autolytic cleavage after Lys-97.,similarity:Belongs to the peptidase M10A family.,similarity:Contains 4 hemopexin-like domains.,tissue specificity:Expressed in mammary gland, placenta, lung, pancreas, ovary, small intestine, spleen, thymus, prostate, testis colon, heart and blood vessel walls. Not detected in brain and peripheral blood leukocytes. Also expressed in the synovial fluid of normal and rheumatoid patients.,

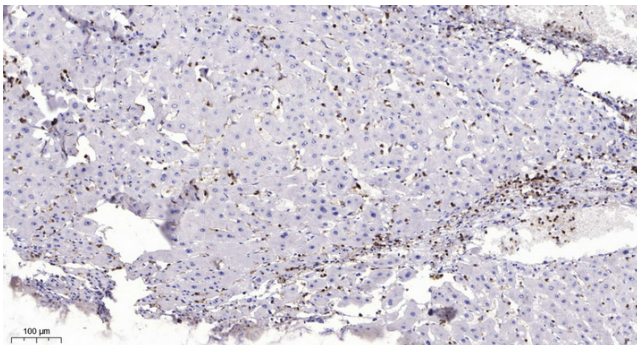
matters needing attention

Avoid repeated freezing and thawing!

Usage suggestions

This product can be used in immunological reaction related experiments. For more information, please consult technical personnel.

Products Images



Immunohistochemical analysis of paraffin-embedded human liver cancer. 1, Antibody was diluted at 1:200(4^o overnight). 2, Tris-EDTA,pH9.0 was used for antigen retrieval. 3,Secondary antibody was diluted at 1:200(room temperature, 45min).