



Cleaved-Cathepsin Z (L62) Polyclonal Antibody

Catalog No	BYab-02287
Isotype	IgG
Reactivity	Human;Monkey
Applications	WB;ELISA
Gene Name	CTSZ
Protein Name	Cathepsin Z
Immunogen	The antiserum was produced against synthesized peptide derived from human CATZ. AA range:43-92
Specificity	Cleaved-Cathepsin Z (L62) Polyclonal Antibody detects endogenous levels of fragment of activated Cathepsin Z protein resulting from cleavage adjacent to L62.
Formulation	Liquid in PBS containing 50% glycerol, 0.5% BSA and 0.02% sodium azide.
Source	Polyclonal, Rabbit,IgG
Purification	The antibody was affinity-purified from rabbit antiserum by affinity-chromatography using epitope-specific immunogen.
Dilution	Western Blot: 1/500 - 1/2000. ELISA: 1/5000. Not yet tested in other applications.
Concentration	1 mg/ml
Purity	≥90%
Storage Stability	-20°C/1 year
Synonyms	CTSZ; Cathepsin Z; Cathepsin P; Cathepsin X
Observed Band	27kD
Cell Pathway	Lysosome.
Tissue Specificity	Widely expressed.
Function	catalytic activity:Release of C-terminal amino acid residues with broad specificity, but lacks action on C-terminal proline. Shows weak endopeptidase activity.,function:Exhibits carboxy-monopeptidase as well as carboxy-dipeptidase activity.,similarity:Belongs to the peptidase C1 family.,tissue specificity:Widely expressed.,
Background	The protein encoded by this gene is a lysosomal cysteine proteinase and member of the peptidase C1 family. It exhibits both carboxy-monopeptidase and carboxy-dipeptidase activities. The encoded protein has also been known as cathepsin X and cathepsin P. This gene is expressed ubiquitously in cancer cell

Nanjing BYabscience technology Co.,Ltd



lines and primary tumors and, like other members of this family, may be involved in tumorigenesis. [provided by RefSeq, Oct 2008],

matters needing attention

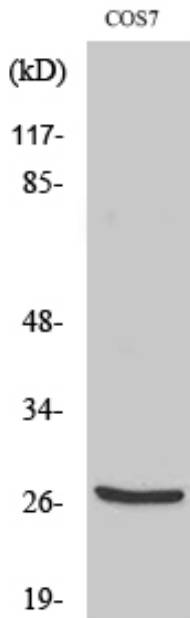
Avoid repeated freezing and thawing!

Usage suggestions

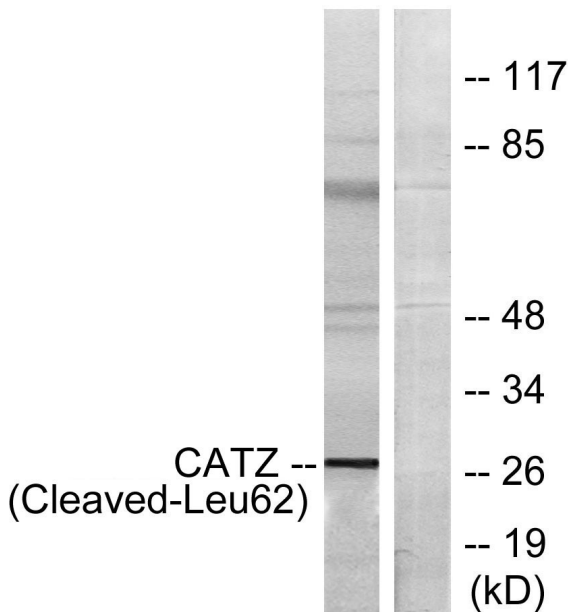
This product can be used in immunological reaction related experiments. For more information, please consult technical personnel.



Products Images



Western Blot analysis of various cells using Cleaved-Cathepsin Z (L62) Polyclonal Antibody



Western blot analysis of lysates from COS7 cells, treated with etoposide 25uM 1h, using CATZ (Cleaved-Leu62) Antibody. The lane on the right is blocked with the synthesized peptide.