



Cathepsin H Polyclonal Antibody

| | |
|---------------------------|--|
| Catalog No | BYab-02283 |
| Isotype | IgG |
| Reactivity | Human;Rat;Mouse; |
| Applications | WB;IHC;IF;ELISA |
| Gene Name | CTSH |
| Protein Name | Pro-cathepsin H |
| Immunogen | Synthesized peptide derived from Cathepsin H . at AA range: 70-150 |
| Specificity | Cathepsin H Polyclonal Antibody detects endogenous levels of Cathepsin H protein. |
| Formulation | Liquid in PBS containing 50% glycerol, 0.5% BSA and 0.02% sodium azide. |
| Source | Polyclonal, Rabbit,IgG |
| Purification | The antibody was affinity-purified from rabbit antiserum by affinity-chromatography using epitope-specific immunogen. |
| Dilution | WB: 1/500 - 1/2000. ELISA: 1/20000.. IF 1:50-200 |
| Concentration | 1 mg/ml |
| Purity | ≥90% |
| Storage Stability | -20°C/1 year |
| Synonyms | CTSH; CPSB; Pro-cathepsin H |
| Observed Band | 40kD |
| Cell Pathway | Lysosome. |
| Tissue Specificity | Cartilage, Eye, Kidney, Liver, Lung, Salivary gland, |
| Function | catalytic activity:Hydrolysis of proteins, acting as an aminopeptidase (notably, cleaving Arg- -Xaa bonds) as well as an endopeptidase.,function:Important for the overall degradation of proteins in lysosomes.,similarity:Belongs to the peptidase C1 family.,subunit:Composed of a mini chain and a large chain. The large chain may be split into heavy and light chain. All chains are held together by disulfide bonds., |
| Background | The protein encoded by this gene is a lysosomal cysteine proteinase important in the overall degradation of lysosomal proteins. It is composed of a dimer of disulfide-linked heavy and light chains, both produced from a single protein precursor. The encoded protein, which belongs to the peptidase C1 protein family, can act both as an aminopeptidase and as an endopeptidase. Increased |

Nanjing BYabscience technology Co.,Ltd



expression of this gene has been correlated with malignant progression of prostate tumors. Alternate splicing of this gene results in multiple transcript variants encoding different isoforms. [provided by RefSeq, Jan 2016],

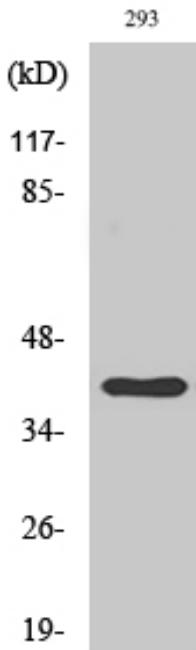
matters needing attention

Avoid repeated freezing and thawing!

Usage suggestions

This product can be used in immunological reaction related experiments. For more information, please consult technical personnel.

Products Images



Western Blot analysis of various cells using Cathepsin H Polyclonal Antibody