



# Cleaved-Cathepsin A 32k (R326) Polyclonal Antibody

<b>Catalog No</b>	BYab-02278
<b>Isotype</b>	IgG
<b>Reactivity</b>	Human;Mouse
<b>Applications</b>	WB;ELISA
<b>Gene Name</b>	CTSA
<b>Protein Name</b>	Lysosomal protective protein
<b>Immunogen</b>	The antiserum was produced against synthesized peptide derived from human PPGB. AA range:277-326
<b>Specificity</b>	Cleaved-Cathepsin A 32k (R326) Polyclonal Antibody detects endogenous levels of fragment of activated Cathepsin A 32k protein resulting from cleavage adjacent to R326.
<b>Formulation</b>	Liquid in PBS containing 50% glycerol, 0.5% BSA and 0.02% sodium azide.
<b>Source</b>	Polyclonal, Rabbit,IgG
<b>Purification</b>	The antibody was affinity-purified from rabbit antiserum by affinity-chromatography using epitope-specific immunogen.
<b>Dilution</b>	Western Blot: 1/500 - 1/2000. ELISA: 1/10000. Not yet tested in other applications.
<b>Concentration</b>	1 mg/ml
<b>Purity</b>	≥90%
<b>Storage Stability</b>	-20°C/1 year
<b>Synonyms</b>	CTSA; PPGB; Lysosomal protective protein; Carboxypeptidase C; Carboxypeptidase L; Cathepsin A; Protective protein cathepsin A; PPCA; Protective protein for beta-galactosidase
<b>Observed Band</b>	33kD
<b>Cell Pathway</b>	Lysosome.
<b>Tissue Specificity</b>	Brain,Liver,Placenta,Platelet,Skin,Uterus,
<b>Function</b>	catalytic activity:Release of a C-terminal amino acid with broad specificity.,disease:Defects in CTSA are the cause of galactosialidosis [MIM:256540]. It is an autosomal recessive disease.,function:Protective protein appears to be essential for both the activity of beta-galactosidase and neuraminidase, it associates with these enzymes and exerts a protective function necessary for their stability and activity. This protein is also a carboxypeptidase and can deamidate tachykinins.,similarity:Belongs to the peptidase S10

Nanjing BYabscience technology Co.,Ltd



family.,subunit:Heterodimer of a 32 kDa chain and a 20 kDa chain;  
disulfide-linked.,

**Background**

This gene encodes a member of the peptidase S10 family of serine carboxypeptidases. Alternative splicing results in multiple transcript variants, at least one of which encodes a preproprotein that is proteolytically processed to generate two chains that comprise the heterodimeric active enzyme. This enzyme possesses deamidase, esterase and carboxypeptidase activities and acts as a scaffold in the lysosomal multienzyme complex. Mutations in this gene are associated with galactosialidosis. [provided by RefSeq, Nov 2015],

**matters needing attention**

Avoid repeated freezing and thawing!

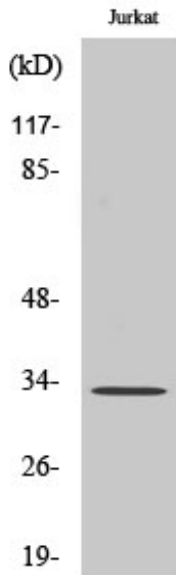
**Usage suggestions**

This product can be used in immunological reaction related experiments. For more information, please consult technical personnel.

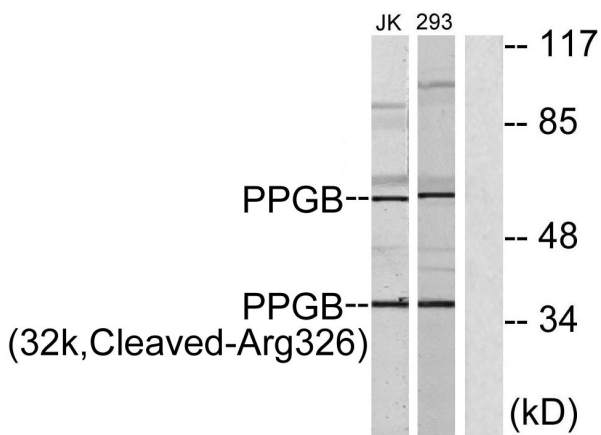
Nanjing BYabscience technology Co.,Ltd



## Products Images



Western Blot analysis of various cells using  
Cleaved-Cathepsin A 32k (R326) Polyclonal Antibody



Western blot analysis of lysates from 293 and Jurkat cells, treated with etoposide 25uM 1h, using PPGB (32k, Cleaved-Arg326) Antibody. The lane on the right is blocked with the synthesized peptide.