



eIF5A/eIF5A2 Polyclonal Antibody

Catalog No	BYab-02266
Isotype	IgG
Reactivity	Human; Mouse; Rat
Applications	WB; ELISA
Gene Name	EIF5A
Protein Name	eIF5A/eIF5A2
Immunogen	Synthesized peptide derived from human eIF5A/eIF5A2
Specificity	This antibody detects endogenous levels of human eIF5A/eIF5A2
Formulation	Liquid in PBS containing 50% glycerol, 0.5% BSA and 0.02% sodium azide.
Source	Polyclonal, Rabbit,IgG
Purification	The antibody was affinity-purified from mouse ascites by affinity-chromatography using specific immunogen.
Dilution	WB 1:500-2000, ELISA(peptide)1:5000-20000
Concentration	1 mg/ml
Purity	≥90%
Storage Stability	-20°C/1 year
Synonyms	Eukaryotic translation initiation factor 5A-1 (eIF-5A-1;eIF-5A1;Eukaryotic initiation factor 5A isoform 1;eIF-5A;Rev-binding factor;eIF-4D)
Observed Band	17kD
Cell Pathway	Cytoplasm . Nucleus . Endoplasmic reticulum membrane ; Peripheral membrane protein ; Cytoplasmic side . Hypusine modification promotes the nuclear export and cytoplasmic localization and there was a dynamic shift in the localization from predominantly cytoplasmic to primarily nuclear under apoptotic inducing conditions (PubMed:19379712, PubMed:27306458). Nuclear export of hypusinated protein is mediated by XPO4 (PubMed:10944119, PubMed:27306458). .
Tissue Specificity	Expressed in umbilical vein endothelial cells and several cancer cell lines (at protein level).
Function	function:The precise role of eIF-5A in protein biosynthesis is not known but it functions by promoting the formation of the first peptide bond.,PTM:eIF-5A seems to be the only eukaryotic protein to have an hypusine residue which is a post-translational modification of a lysine by the addition of a butylamino group (from spermidine).,similarity:Belongs to the eIF-5A family.,subunit:Found in a complex with Ran and XPO4. The hypusine modification increases the interaction

Nanjing BYabscience technology Co.,Ltd



with XPO4.,tissue specificity:Expressed in umbilical vein endothelial cells and several cancer cell lines (at protein level).,

Background

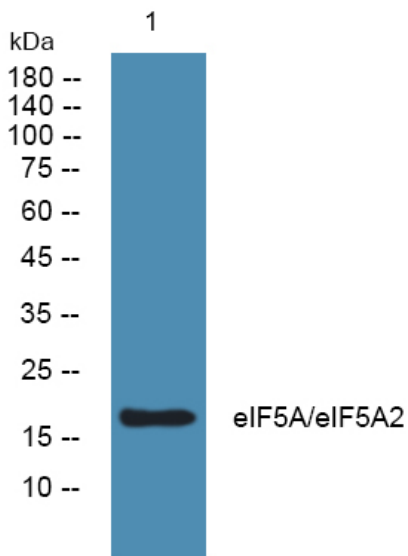
matters needing attention

Avoid repeated freezing and thawing!

Usage suggestions

This product can be used in immunological reaction related experiments. For more information, please consult technical personnel.

Products Images



Western blot analysis of lysates from PC12 cells, primary antibody was diluted at 1:1000, 4° over night