



# Topo III $\alpha$ Polyclonal Antibody

<b>Catalog No</b>	BYab-02256
<b>Isotype</b>	IgG
<b>Reactivity</b>	Human;Mouse
<b>Applications</b>	WB;ELISA
<b>Gene Name</b>	TOP3A
<b>Protein Name</b>	DNA topoisomerase 3-alpha
<b>Immunogen</b>	Synthesized peptide derived from Topo III $\alpha$ . at AA range: 350-430
<b>Specificity</b>	Topo III $\alpha$ Polyclonal Antibody detects endogenous levels of Topo III $\alpha$ protein.
<b>Formulation</b>	Liquid in PBS containing 50% glycerol, 0.5% BSA and 0.02% sodium azide.
<b>Source</b>	Polyclonal, Rabbit,IgG
<b>Purification</b>	The antibody was affinity-purified from rabbit antiserum by affinity-chromatography using epitope-specific immunogen.
<b>Dilution</b>	Western Blot: 1/500 - 1/2000. ELISA: 1/10000. Not yet tested in other applications.
<b>Concentration</b>	1 mg/ml
<b>Purity</b>	$\geq 90\%$
<b>Storage Stability</b>	-20°C/1 year
<b>Synonyms</b>	TOP3A; TOP3; DNA topoisomerase 3-alpha; DNA topoisomerase III alpha
<b>Observed Band</b>	115kD
<b>Cell Pathway</b>	Mitochondrion matrix .
<b>Tissue Specificity</b>	High expression is found in testis, heart, skeletal muscle and pancreas.
<b>Function</b>	catalytic activity:ATP-independent breakage of single-stranded DNA, followed by passage and rejoining.,function:Reduces the number of supercoils in a highly negatively supercoiled DNA. Essential component of the RMI complex, a complex that plays an important role in the processing of homologous recombination intermediates to limit DNA crossover formation in cells.,similarity:Belongs to the prokaryotic type I/III topoisomerase family.,subunit:Directly interacts with BLM and RMI1. Component of the RMI complex, containing at least TOP3A, RMI1 and RMI2. The RMI complex interacts with BLM.,tissue specificity:High expression is found in testis, heart, skeletal muscle and pancreas.,
<b>Background</b>	This gene encodes a DNA topoisomerase, an enzyme that controls and alters the topologic states of DNA during transcription. This enzyme catalyzes the

Nanjing BYabscience technology Co.,Ltd



transient breaking and rejoining of a single strand of DNA which allows the strands to pass through one another, thus reducing the number of supercoils and altering the topology of DNA. This enzyme forms a complex with BLM which functions in the regulation of recombination in somatic cells. Alternative splicing results in multiple transcript variants encoding different isoforms. [provided by RefSeq, Mar 2016],

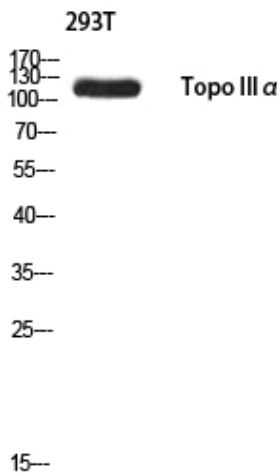
**matters needing attention**

Avoid repeated freezing and thawing!

**Usage suggestions**

This product can be used in immunological reaction related experiments. For more information, please consult technical personnel.

## Products Images



Western blot analysis of 293T using Topo III $\alpha$  antibody. Antibody was diluted at 1:500. Secondary antibody(catalog#:RS0002) was diluted at 1:20000 cells nucleus extracted by Minute TM Cytoplasmic and Nuclear Fractionation kit (SC-003, Inventbiotech, MN, USA).