



# RNase III Drosha Polyclonal Antibody

<b>Catalog No</b>	BYab-02254
<b>Isotype</b>	IgG
<b>Reactivity</b>	Human;Mouse
<b>Applications</b>	WB;IHC;IF;ELISA
<b>Gene Name</b>	DROSHA
<b>Protein Name</b>	Ribonuclease 3
<b>Immunogen</b>	The antiserum was produced against synthesized peptide derived from human RNase III Drosha. AA range:774-823
<b>Specificity</b>	RNase III Drosha Polyclonal Antibody detects endogenous levels of RNase III Drosha protein.
<b>Formulation</b>	Liquid in PBS containing 50% glycerol, 0.5% BSA and 0.02% sodium azide.
<b>Source</b>	Polyclonal, Rabbit,IgG
<b>Purification</b>	The antibody was affinity-purified from rabbit antiserum by affinity-chromatography using epitope-specific immunogen.
<b>Dilution</b>	WB: 1/500 - 1/2000. IHC-p: 1:100-1:300. ELISA: 1/10000.. IF 1:50-200
<b>Concentration</b>	1 mg/ml
<b>Purity</b>	≥90%
<b>Storage Stability</b>	-20°C/1 year
<b>Synonyms</b>	DROSHA; RN3; RNASE3L; RNASEN; Ribonuclease 3; Protein Drosha; Ribonuclease III; RNase III; p241
<b>Observed Band</b>	160kD
<b>Cell Pathway</b>	Nucleus . Nucleus, nucleolus . A fraction is translocated to the nucleolus during the S phase of the cell cycle. Localized in GW bodies (GWBs), also known as P-bodies. .
<b>Tissue Specificity</b>	Ubiquitous.
<b>Function</b>	catalytic activity:Endonucleolytic cleavage to 5'-phosphomonoester.,cofactor:Magnesium or manganese.,function:Executes the initial step of microRNA (miRNA) processing in the nucleus, that is cleavage of pri-miRNA to release pre-miRNA. Involved in pre-rRNA processing. Cleaves double-strand RNA and does not cleave single-strand RNA.,online information:The dark side of RNA -Issue 87 of October 2007,similarity:Contains 1 DRBM (double-stranded RNA-binding) domain.,similarity:Contains 2 RNase III domains.,subcellular location:A fraction is translocated to the nucleolus during the S phase of the cell cycle.,subunit:Interacts with Sp1.,tissue specificity:Ubiquitous.,

**Nanjing BYabscience technology Co.,Ltd**



---

**Background**

drosha ribonuclease III(DROSHA) Homo sapiens This gene encodes a ribonuclease (RNase) III double-stranded RNA-specific ribonuclease and subunit of the microprocessor protein complex, which catalyzes the initial processing step of microRNA (miRNA) synthesis. The encoded protein cleaves the stem loop structure from the primary microRNA (pri-miRNA) in the nucleus, yielding the precursor miRNA (pre-miRNA), which is then exported to the cytoplasm for further processing. In a human cell line lacking a functional copy of this gene, canonical miRNA synthesis is reduced. Somatic mutations in this gene have been observed in human patients with kidney cancer. [provided by RefSeq, Sep 2016],

---

**matters needing attention**

Avoid repeated freezing and thawing!

---

**Usage suggestions**

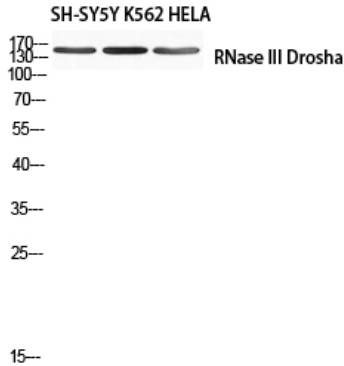
This product can be used in immunological reaction related experiments. For more information, please consult technical personnel.

---

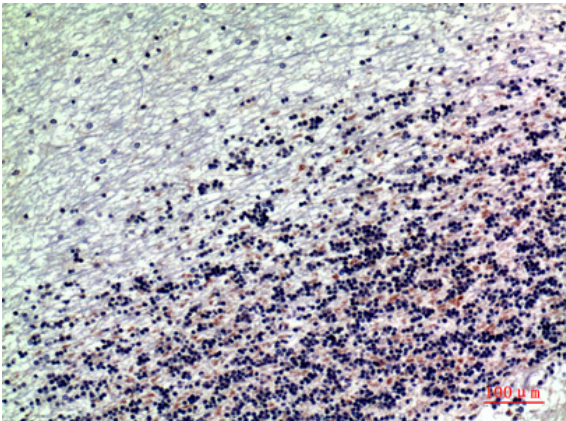
Nanjing BYabscience technology Co.,Ltd



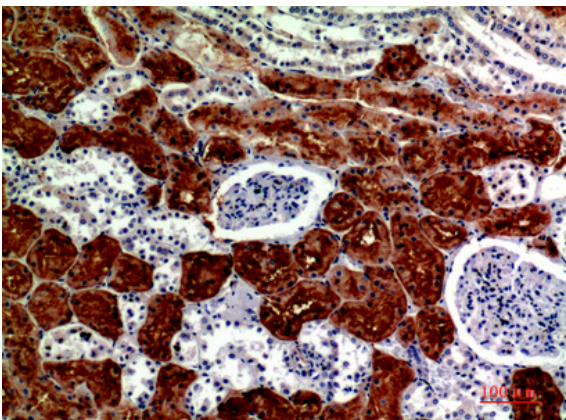
## Products Images



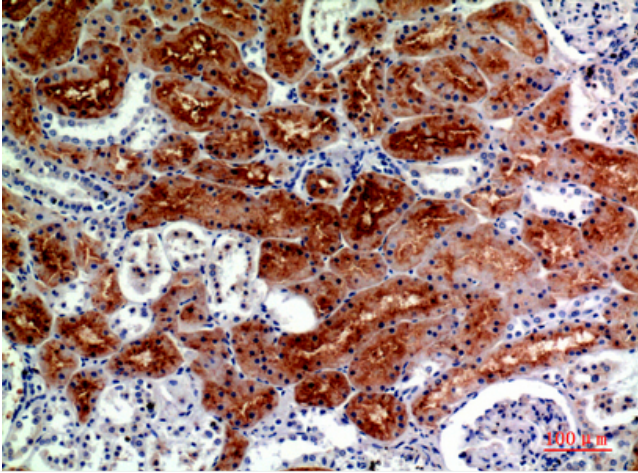
Western blot analysis of SH-SY5Y K562 HELA using RNase III Droscha antibody. Antibody was diluted at 1:1000. Secondary antibody(catalog#:RS0002) was diluted at 1:20000 cells nucleus extracted by Minute TM Cytoplasmic and Nuclear Fractionation kit (SC-003, Inventbiotech, MN, USA).



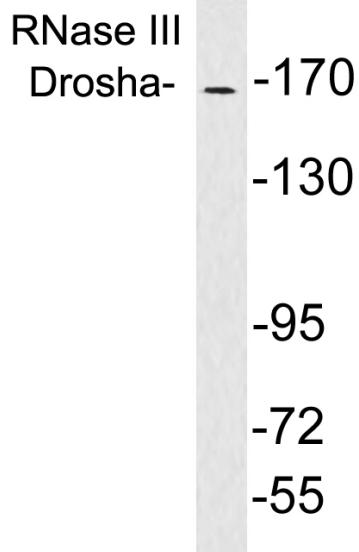
Immunohistochemical analysis of paraffin-embedded human-brain, antibody was diluted at 1:200



Immunohistochemical analysis of paraffin-embedded human-kidney, antibody was diluted at 1:200



Immunohistochemical analysis of paraffin-embedded human-kidney, antibody was diluted at 1:200



Western blot analysis of lysates from brain tissue, using RNase III Drosha antibody.