



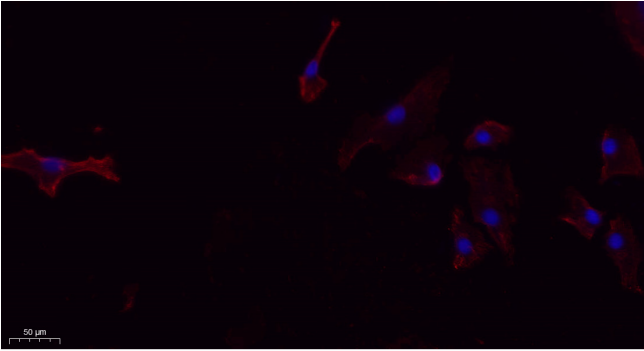
# FUNDC1 Polyclonal Antibody

|                                  |  |
|----------------------------------|--|
| <b>Catalog No</b>                | BYab-02253   |
| <b>Isotype</b>                   | IgG  |
| <b>Reactivity</b>                | Human;Mouse;Rat  |
| <b>Applications</b>              | WB IF;ELISA  |
| <b>Gene Name</b>                 | FUNDC1   |
| <b>Protein Name</b>              | FUN14 domain-containing protein 1  |
| <b>Immunogen</b>                 | The antiserum was produced against synthesized peptide derived from the N-terminal region of human FUNDC1. AA range:1-50                       |
| <b>Specificity</b>               | FUNDC1 Polyclonal Antibody detects endogenous levels of FUNDC1 protein.  |
| <b>Formulation</b>               | Liquid in PBS containing 50% glycerol, 0.5% BSA and 0.02% sodium azide.  |
| <b>Source</b>                    | Polyclonal, Rabbit,IgG   |
| <b>Purification</b>              | The antibody was affinity-purified from rabbit antiserum by affinity-chromatography using epitope-specific immunogen.                          |
| <b>Dilution</b>                  | WB 1:500-2000 IF 1:100-300 ELISA 1:5000-20000 Not yet tested in other applications.  |
| <b>Concentration</b>             | 1 mg/ml  |
| <b>Purity</b>                    | ≥90%   |
| <b>Storage Stability</b>         | -20°C/1 year   |
| <b>Synonyms</b>                  | FUNDC1; FUN14 domain-containing protein 1  |
| <b>Observed Band</b>             | 17kD   |
| <b>Cell Pathway</b>              | Mitochondrion outer membrane ; Multi-pass membrane protein .   |
| <b>Tissue Specificity</b>        | Widely expressed.  |
| <b>Function</b>                  | similarity:Belongs to the FUN14 family.,   |
| <b>Background</b>                | This gene encodes a protein with a FUN14 superfamily domain. The function of the encoded protein is not known. [provided by RefSeq, Sep 2011], |
| <b>matters needing attention</b> | Avoid repeated freezing and thawing!   |
| <b>Usage suggestions</b>         | This product can be used in immunological reaction related experiments. For more information, please consult technical personnel.              |

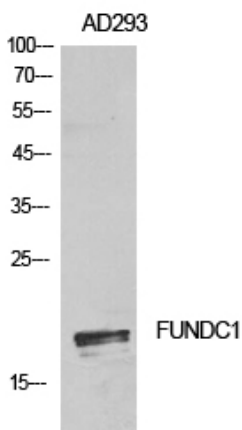
**Nanjing BYabscience technology Co.,Ltd**



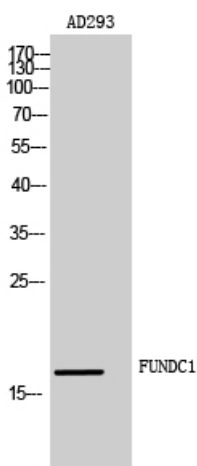
## Products Images



Immunofluorescence analysis of A549. 1,primary Antibody(red) was diluted at 1:200(4°C overnight). 2, Goat Anti Rabbit IgG (H&L) - Alexa Fluor 594 Secondary antibody was diluted at 1:1000(room temperature, 50min).3, Picture B: DAPI(blue) 10min.



Western Blot analysis of AD293 cells using FUNDC1 Polyclonal Antibody. Antibody was diluted at 1:500. Secondary antibody(catalog#:RS0002) was diluted at 1:20000



Western Blot analysis of AD293 cells using FUNDC1 Polyclonal Antibody diluted at 1:500. Secondary antibody(catalog#:RS0002) was diluted at 1:20000