



RRP7A Polyclonal Antibody

Catalog No	BYab-02228
Isotype	IgG
Reactivity	Human;Mouse;Rat
Applications	WB;IHC;IF;ELISA
Gene Name	RRP7A
Protein Name	Ribosomal RNA-processing protein 7 homolog A/B
Immunogen	Synthesized peptide derived from the C-terminal region of human RRP7A.
Specificity	RRP7A Polyclonal Antibody detects endogenous levels of RRP7A protein.
Formulation	Liquid in PBS containing 50% glycerol, 0.5% BSA and 0.02% sodium azide.
Source	Polyclonal, Rabbit,IgG
Purification	The antibody was affinity-purified from rabbit antiserum by affinity-chromatography using epitope-specific immunogen.
Dilution	WB: 1/500 - 1/2000. IHC-p: 1:100-300 ELISA: 1/20000.. IF 1:50-200
Concentration	1 mg/ml
Purity	≥90%
Storage Stability	-20°C/1 year
Synonyms	RRP7A; CGI-96; Ribosomal RNA-processing protein 7 homolog A; Gastric cancer antigen Zg14; RRP7B; Putative ribosomal RNA-processing protein 7 homolog B; Putative gastric cancer antigen Zg14-like protein
Observed Band	32kD
Cell Pathway	Nucleus, nucleolus . Cell projection, cilium . Cytoplasm, cytoskeleton, microtubule organizing center, centrosome .
Tissue Specificity	Expressed in the apical radial glial cells in the developing brain.
Function	caution:Could be the product of a pseudogene.,similarity:Belongs to the RRP7 family.,similarity:Contains 1 RRM (RNA recognition motif) domain.,
Background	caution:Could be the product of a pseudogene.,similarity:Belongs to the RRP7 family.,similarity:Contains 1 RRM (RNA recognition motif) domain.,
matters needing attention	Avoid repeated freezing and thawing!

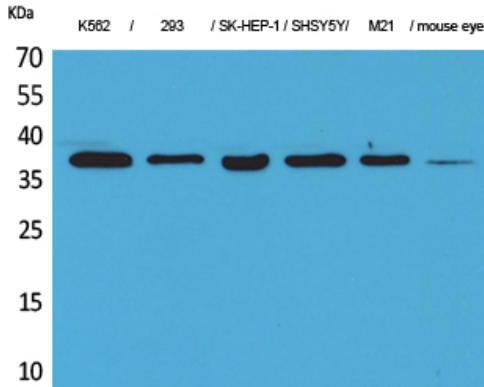
Nanjing BYabscience technology Co.,Ltd



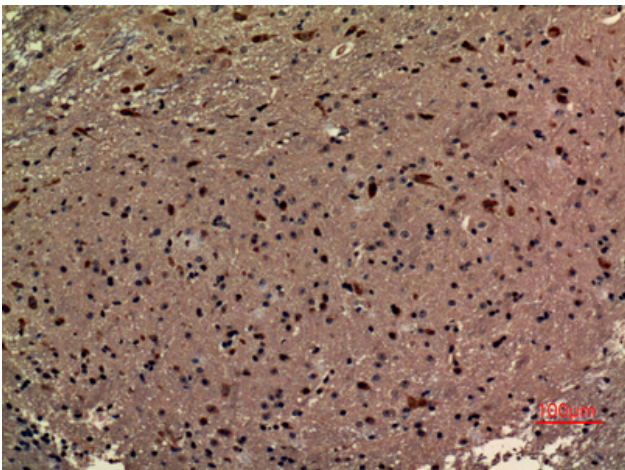
Usage suggestions

This product can be used in immunological reaction related experiments. For more information, please consult technical personnel.

Products Images



Western Blot analysis of K562, 293, SK-HEP-1, SHSY5Y, M21, mouse eye cells using RRP7A Polyclonal Antibody. Secondary antibody(catalog#:RS0002) was diluted at 1:20000



Immunohistochemical analysis of paraffin-embedded mouse-brain, antibody was diluted at 1:100