



DNA pol ϵ B Polyclonal Antibody

Catalog No	BYab-02220
Isotype	IgG
Reactivity	Human;Rat;Mouse;
Applications	WB;ELISA
Gene Name	POLE2
Protein Name	DNA polymerase epsilon subunit 2
Immunogen	Synthesized peptide derived from the Internal region of human DNA pol ϵ B.
Specificity	DNA pol ϵ B Polyclonal Antibody detects endogenous levels of DNA pol ϵ B protein.
Formulation	Liquid in PBS containing 50% glycerol, 0.5% BSA and 0.02% sodium azide.
Source	Polyclonal, Rabbit,IgG
Purification	The antibody was affinity-purified from rabbit antiserum by affinity-chromatography using epitope-specific immunogen.
Dilution	Western Blot: 1/500 - 1/2000. ELISA: 1/40000. Not yet tested in other applications.
Concentration	1 mg/ml
Purity	$\geq 90\%$
Storage Stability	-20°C/1 year
Synonyms	POLE2; DPE2; DNA polymerase epsilon subunit 2; DNA polymerase II subunit 2; DNA polymerase epsilon subunit B
Observed Band	59kD
Cell Pathway	Nucleus.
Tissue Specificity	T cells,
Function	catalytic activity:Deoxynucleoside triphosphate + DNA(n) = diphosphate + DNA(n+1).,function:Participates in DNA repair and in chromosomal DNA replication.,miscellaneous:In eukaryotes there are five DNA polymerases: alpha, beta, gamma, delta, and epsilon which are responsible for different reactions of DNA synthesis.,similarity:Belongs to the DNA polymerase epsilon subunit B family.,subunit:Consists of four subunits: POLE, POLE2, POLE3 and POLE4.,
Background	catalytic activity:Deoxynucleoside triphosphate + DNA(n) = diphosphate + DNA(n+1).,function:Participates in DNA repair and in chromosomal DNA replication.,miscellaneous:In eukaryotes there are five DNA polymerases: alpha, beta, gamma, delta, and epsilon which are responsible for different reactions of

Nanjing BYabscience technology Co.,Ltd



DNA synthesis.,similarity:Belongs to the DNA polymerase epsilon subunit B family.,subunit:Consists of four subunits: POLE, POLE2, POLE3 and POLE4.,

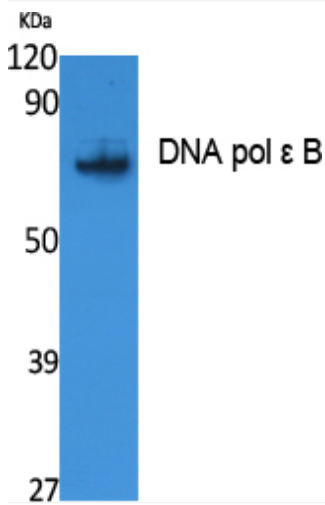
matters needing attention

Avoid repeated freezing and thawing!

Usage suggestions

This product can be used in immunological reaction related experiments. For more information, please consult technical personnel.

Products Images



Western Blot analysis of extracts from Jurkat cells, using DNA pol ε B Polyclonal Antibody. Secondary antibody(catalog#:RS0002) was diluted at 1:20000 cells nucleus extracted by Minute TM Cytoplasmic and Nuclear Fractionation kit (SC-003, Inventbiotech, MN, USA).