



# SAP 155 Polyclonal Antibody

<b>Catalog No</b>	BYab-02215
<b>Isotype</b>	IgG
<b>Reactivity</b>	Human;Mouse
<b>Applications</b>	WB;IHC
<b>Gene Name</b>	SF3B1
<b>Protein Name</b>	Splicing factor 3B subunit 1
<b>Immunogen</b>	The antiserum was produced against synthesized peptide derived from human SAP 155. AA range:75-124
<b>Specificity</b>	SAP 155 Polyclonal Antibody detects endogenous levels of SAP 155 protein.
<b>Formulation</b>	Liquid in PBS containing 50% glycerol, 0.5% BSA and 0.02% sodium azide.
<b>Source</b>	Polyclonal, Rabbit,IgG
<b>Purification</b>	The antibody was affinity-purified from rabbit antiserum by affinity-chromatography using epitope-specific immunogen.
<b>Dilution</b>	WB 1:500-2000;IHC-p 1:50-300
<b>Concentration</b>	1 mg/ml
<b>Purity</b>	≥90%
<b>Storage Stability</b>	-20°C/1 year
<b>Synonyms</b>	SF3B1; SAP155; Splicing factor 3B subunit 1; Pre-mRNA-splicing factor SF3b 155 kDa subunit; SF3b155; Spliceosome-associated protein 155; SAP 155
<b>Observed Band</b>	145kD
<b>Cell Pathway</b>	Nucleus . Nucleus speckle. During mitosis, transiently dispersed from the nuclear speckles to the cytoplasm.
<b>Tissue Specificity</b>	Brain,Epithelium,Pooled,Testis,Uterus,
<b>Function</b>	function:Subunit of the splicing factor SF3B required for 'A' complex assembly formed by the stable binding of U2 snRNP to the branchpoint sequence (BPS) in pre-mRNA. Sequence independent binding of SF3A/SF3B complex upstream of the branch site is essential, it may anchor U2 snRNP to the pre-mRNA. May also be involved in the assembly of the 'E' complex. Belongs also to the minor U12-dependent spliceosome, which is involved in the splicing of rare class of nuclear pre-mRNA intron.,PTM:Phosphorylated. Phosphorylation occurs concomitantly with the splicing catalytic steps. Phosphorylation on Thr-244, Thr-248 and Thr-313 by cyclin-dependent kinases promotes interaction with PPP1R8 during mitosis.,similarity:Belongs to the SF3B1

Nanjing BYabscience technology Co.,Ltd



family.,similarity:Contains 11 HEAT repeats.,subcellular location:During mitosis, transiently dispersed from the nuclear speckles to the cytoplasm.,subunit:Identified

**Background**

This gene encodes subunit 1 of the splicing factor 3b protein complex. Splicing factor 3b, together with splicing factor 3a and a 12S RNA unit, forms the U2 small nuclear ribonucleoproteins complex (U2 snRNP). The splicing factor 3b/3a complex binds pre-mRNA upstream of the intron's branch site in a sequence independent manner and may anchor the U2 snRNP to the pre-mRNA. Splicing factor 3b is also a component of the minor U12-type spliceosome. The carboxy-terminal two-thirds of subunit 1 have 22 non-identical, tandem HEAT repeats that form rod-like, helical structures. Alternative splicing results in multiple transcript variants encoding different isoforms. [provided by RefSeq, Jul 2008],

**matters needing attention**

Avoid repeated freezing and thawing!

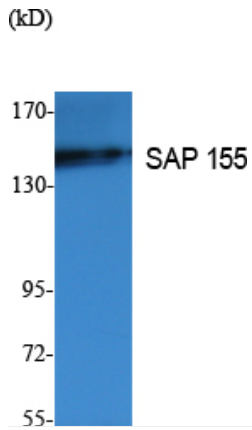
**Usage suggestions**

This product can be used in immunological reaction related experiments. For more information, please consult technical personnel.

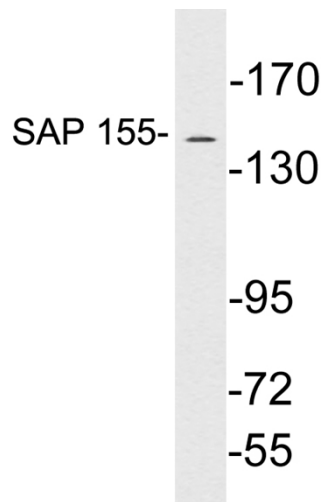
Nanjing BYabscience technology Co.,Ltd



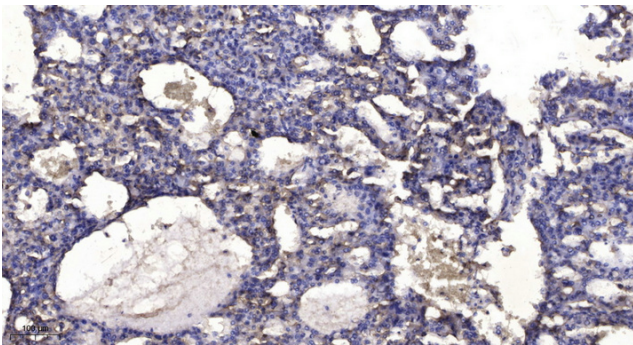
## Products Images



Western Blot analysis of extracts from K562 cells, using SAP 155 Polyclonal Antibody. Secondary antibody(catalog#:RS0002) was diluted at 1:20000 cells nucleus extracted by Minute TM Cytoplasmic and Nuclear Fractionation kit (SC-003,Inventbiotech,MN,USA).



Western blot analysis of lysates from Jurkat cells, using SAP 155 antibody.



Immunohistochemical analysis of paraffin-embedded human liver cancer. 1, Antibody was diluted at 1:200(4° overnight). 2, Tris-EDTA,pH9.0 was used for antigen retrieval. 3,Secondary antibody was diluted at 1:200(room temperature, 45min).