



EF-1 β Polyclonal Antibody

Catalog No	BYab-02213
Isotype	IgG
Reactivity	Human;Mouse;Rat
Applications	WB;ELISA
Gene Name	EEF1B2
Protein Name	Elongation factor 1-beta
Immunogen	The antiserum was produced against synthesized peptide derived from human EF-1beta. AA range:83-132
Specificity	EF-1 β Polyclonal Antibody detects endogenous levels of EF-1 β protein.
Formulation	Liquid in PBS containing 50% glycerol, 0.5% BSA and 0.02% sodium azide.
Source	Polyclonal, Rabbit,IgG
Purification	The antibody was affinity-purified from rabbit antiserum by affinity-chromatography using epitope-specific immunogen.
Dilution	Western Blot: 1/500 - 1/2000. ELISA: 1/20000. Not yet tested in other applications.
Concentration	1 mg/ml
Purity	$\geq 90\%$
Storage Stability	-20°C/1 year
Synonyms	EEF1B2; EEF1B; EF1B; Elongation factor 1-beta; EF-1-beta
Observed Band	24kD
Cell Pathway	nucleus,cytoplasm,endoplasmic reticulum,cytosol,eukaryotic translation elongation factor 1 complex,
Tissue Specificity	Brain,Epithelium,Eye,Fetal brain cortex,Keratinocyt
Function	function:EF-1-beta and EF-1-delta stimulate the exchange of GDP bound to EF-1-alpha to GTP.,PTM:Phosphorylation affects the GDP/GTP exchange rate.,similarity:Belongs to the EF-1-beta/EF-1-delta family.,similarity:Contains 1 GST C-terminal domain.,subunit:EF-1 is composed of 4 subunits: alpha, beta, delta, and gamma.,
Background	This gene encodes a translation elongation factor. The protein is a guanine nucleotide exchange factor involved in the transfer of aminoacylated tRNAs to the ribosome. Alternative splicing results in three transcript variants which differ only in the 5' UTR. [provided by RefSeq, Jul 2008],

Nanjing BYabscience technology Co.,Ltd



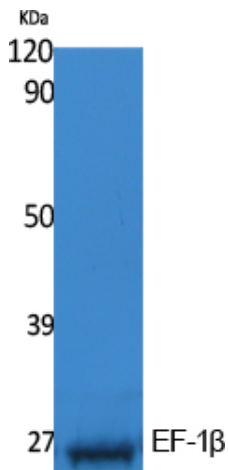
matters needing attention

Avoid repeated freezing and thawing!

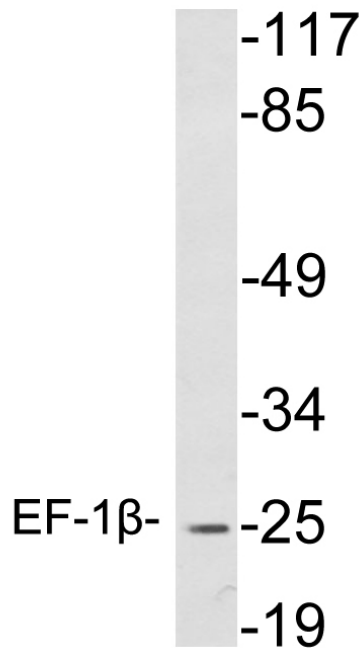
Usage suggestions

This product can be used in immunological reaction related experiments. For more information, please consult technical personnel.

Products Images



Western Blot analysis of extracts from K562 cells, using EF-1 β Polyclonal Antibody. Secondary antibody(catalog#:RS0002) was diluted at 1:20000



Western blot analysis of lysates from K562 cells , using EF-1 β antibody.