



ZSCAN22 Polyclonal Antibody

Catalog No	BYab-02208
Isotype	IgG
Reactivity	Human;Rat;Mouse;
Applications	WB;IHC;IF;ELISA
Gene Name	ZSCAN22
Protein Name	Zinc finger and SCAN domain-containing protein 22
Immunogen	The antiserum was produced against synthesized peptide derived from human ZSCAN22. AA range:321-370
Specificity	ZSCAN22 Polyclonal Antibody detects endogenous levels of ZSCAN22 protein.
Formulation	Liquid in PBS containing 50% glycerol, 0.5% BSA and 0.02% sodium azide.
Source	Polyclonal, Rabbit,IgG
Purification	The antibody was affinity-purified from rabbit antiserum by affinity-chromatography using epitope-specific immunogen.
Dilution	WB: 1/500 - 1/2000. IHC: 1/100 - 1/300. ELISA: 1/10000.. IF 1:50-200
Concentration	1 mg/ml
Purity	≥90%
Storage Stability	-20°C/1 year
Synonyms	ZSCAN22; HKR2; ZNF50; Zinc finger and SCAN domain-containing protein 22; Krueppel-related zinc finger protein 2; Protein HKR2; Zinc finger protein 50
Observed Band	55kD
Cell Pathway	Nucleus .
Tissue Specificity	Fetal kidney,Placenta,Uterus,
Function	function:May be involved in transcriptional regulation.,PTM:Phosphorylated upon DNA damage, probably by ATM or ATR.,similarity:Belongs to the krueppel C2H2-type zinc-finger protein family.,similarity:Contains 1 SCAN box domain.,similarity:Contains 8 C2H2-type zinc fingers.,
Background	function:May be involved in transcriptional regulation.,PTM:Phosphorylated upon DNA damage, probably by ATM or ATR.,similarity:Belongs to the krueppel C2H2-type zinc-finger protein family.,similarity:Contains 1 SCAN box domain.,similarity:Contains 8 C2H2-type zinc fingers.,

Nanjing BYabscience technology Co.,Ltd



matters needing attention

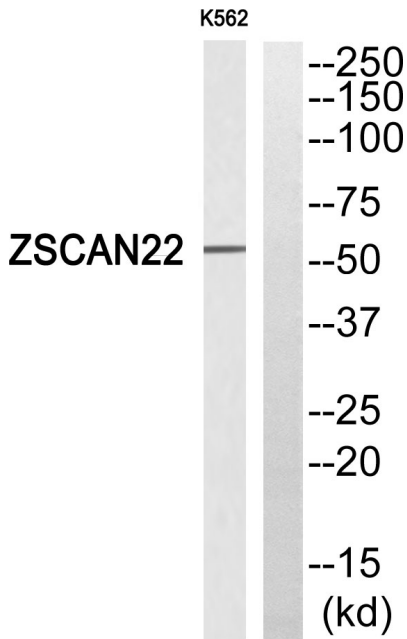
Avoid repeated freezing and thawing!

Usage suggestions

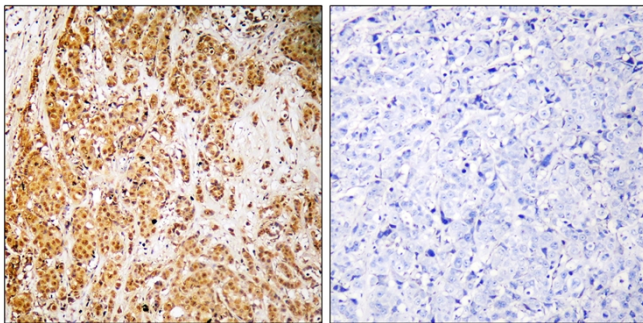
This product can be used in immunological reaction related experiments. For more information, please consult technical personnel.



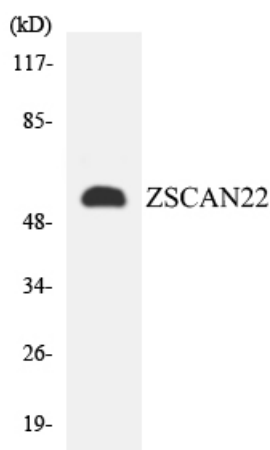
Products Images



Western blot analysis of ZSCAN22 Antibody. The lane on the right is blocked with the ZSCAN22 peptide.



Immunohistochemistry analysis of paraffin-embedded human brain, using ZSCAN22 Antibody. The lane on the right is blocked with the ZSCAN22 peptide.



Western blot analysis of the lysates from HepG2 cells using ZSCAN22 antibody.