



ZNF541 Polyclonal Antibody

Catalog No	BYab-02192
Isotype	IgG
Reactivity	Human;Rat;Mouse;
Applications	WB;ELISA
Gene Name	ZNF541
Protein Name	Zinc finger protein 541
Immunogen	The antiserum was produced against synthesized peptide derived from human ZNF541. AA range:931-980
Specificity	ZNF541 Polyclonal Antibody detects endogenous levels of ZNF541 protein.
Formulation	Liquid in PBS containing 50% glycerol, 0.5% BSA and 0.02% sodium azide.
Source	Polyclonal, Rabbit,IgG
Purification	The antibody was affinity-purified from rabbit antiserum by affinity-chromatography using epitope-specific immunogen.
Dilution	Western Blot: 1/500 - 1/2000. ELISA: 1/20000. Not yet tested in other applications.
Concentration	1 mg/ml
Purity	≥90%
Storage Stability	-20°C/1 year
Synonyms	ZNF541; Zinc finger protein 541
Observed Band	83kD
Cell Pathway	Nucleus .
Tissue Specificity	Epithelium,Testis,
Function	function:Component of some chromatin remodeling multiprotein complex that plays a role during spermatogenesis.,similarity:Contains 1 ELM2 domain.,similarity:Contains 1 SANT domain.,similarity:Contains 5 C2H2-type zinc fingers.,subunit:Interacts with HDAC1 and HSPA2.,
Background	function:Component of some chromatin remodeling multiprotein complex that plays a role during spermatogenesis.,similarity:Contains 1 ELM2 domain.,similarity:Contains 1 SANT domain.,similarity:Contains 5 C2H2-type zinc fingers.,subunit:Interacts with HDAC1 and HSPA2.,

Nanjing BYabscience technology Co.,Ltd



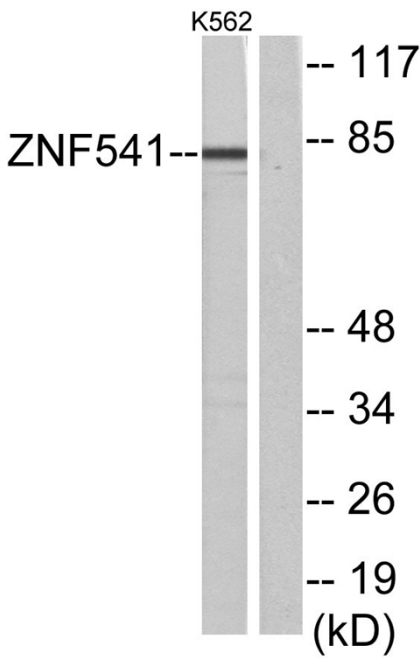
matters needing attention

Avoid repeated freezing and thawing!

Usage suggestions

This product can be used in immunological reaction related experiments. For more information, please consult technical personnel.

Products Images



Western blot analysis of lysates from K562 cells, using ZNF541 Antibody. The lane on the right is blocked with the synthesized peptide.