



ZNF436 Polyclonal Antibody

| | |
|---------------------------|---|
| Catalog No | BYab-02188 |
| Isotype | IgG |
| Reactivity | Human;Rat;Mouse; |
| Applications | WB;IHC;IF;ELISA |
| Gene Name | ZNF436 |
| Protein Name | Zinc finger protein 436 |
| Immunogen | The antiserum was produced against synthesized peptide derived from human ZNF436. AA range:71-120 |
| Specificity | ZNF436 Polyclonal Antibody detects endogenous levels of ZNF436 protein. |
| Formulation | Liquid in PBS containing 50% glycerol, 0.5% BSA and 0.02% sodium azide. |
| Source | Polyclonal, Rabbit,IgG |
| Purification | The antibody was affinity-purified from rabbit antiserum by affinity-chromatography using epitope-specific immunogen. |
| Dilution | WB: 1/500 - 1/2000. IHC: 1/100 - 1/300. ELISA: 1/20000.. IF 1:50-200 |
| Concentration | 1 mg/ml |
| Purity | ≥90% |
| Storage Stability | -20°C/1 year |
| Synonyms | ZNF436; KIAA1710; Zinc finger protein 436 |
| Observed Band | 50kD |
| Cell Pathway | Nucleus . |
| Tissue Specificity | Expressed in fetal brain, heart, liver, spleen, bladder, lung, skin, skeletal muscle, stomach and pancreas. |
| Function | function:May be a transcriptional repressor.,similarity:Belongs to the krueppel C2H2-type zinc-finger protein family.,similarity:Contains 1 KRAB domain.,similarity:Contains 12 C2H2-type zinc fingers.,tissue specificity:Expressed in fetal brain, heart, liver, spleen, bladder, lung, skin, skeletal muscle, stomach and pancreas., |
| Background | function:May be a transcriptional repressor.,similarity:Belongs to the krueppel C2H2-type zinc-finger protein family.,similarity:Contains 1 KRAB domain.,similarity:Contains 12 C2H2-type zinc fingers.,tissue specificity:Expressed in fetal brain, heart, liver, spleen, bladder, lung, skin, skeletal muscle, stomach and pancreas., |

Nanjing BYabscience technology Co.,Ltd



matters needing attention

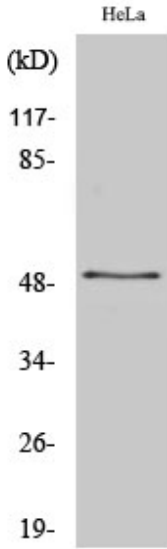
Avoid repeated freezing and thawing!

Usage suggestions

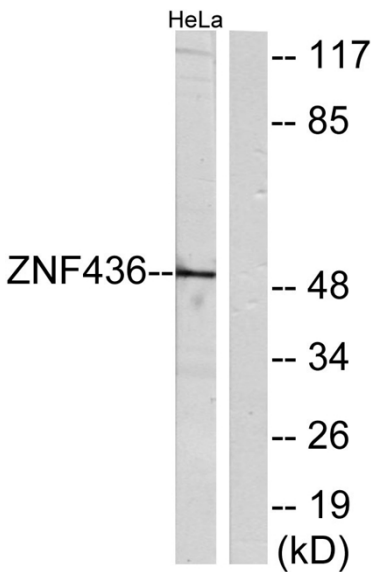
This product can be used in immunological reaction related experiments. For more information, please consult technical personnel.



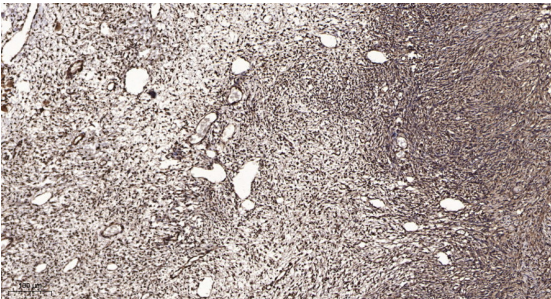
Products Images



Western Blot analysis of various cells using ZNF436 Polyclonal Antibody. Secondary antibody(catalog#:RS0002) was diluted at 1:20000 cells nucleus extracted by Minute TM Cytoplasmic and Nuclear Fractionation kit (SC-003, Inventbiotech, MN, USA).



Western blot analysis of lysates from HeLa cells, using ZNF436 Antibody. The lane on the right is blocked with the synthesized peptide.



Immunohistochemical analysis of paraffin-embedded human oophoroma. 1, Antibody was diluted at 1:200(4° overnight). 2, Tris-EDTA, pH9.0 was used for antigen retrieval. 3, Secondary antibody was diluted at 1:200(room temperature, 45min).

Nanjing BYabscience technology Co.,Ltd