



ZNF420 Polyclonal Antibody

Catalog No	BYab-02187
Isotype	IgG
Reactivity	Human;Mouse
Applications	WB;ELISA
Gene Name	ZNF420
Protein Name	Zinc finger protein 420
Immunogen	The antiserum was produced against synthesized peptide derived from human ZNF420. AA range:301-350
Specificity	ZNF420 Polyclonal Antibody detects endogenous levels of ZNF420 protein.
Formulation	Liquid in PBS containing 50% glycerol, 0.5% BSA and 0.02% sodium azide.
Source	Polyclonal, Rabbit,IgG
Purification	The antibody was affinity-purified from rabbit antiserum by affinity-chromatography using epitope-specific immunogen.
Dilution	Western Blot: 1/500 - 1/2000. ELISA: 1/40000. Not yet tested in other applications.
Concentration	1 mg/ml
Purity	≥90%
Storage Stability	-20°C/1 year
Synonyms	ZNF420; Zinc finger protein 420
Observed Band	80kD
Cell Pathway	Nucleus .
Tissue Specificity	Muscle,Placenta,Testis,
Function	function:May be involved in transcriptional regulation.,PTM:Phosphorylated upon DNA damage, probably by ATM or ATR.,similarity:Contains 1 KRAB domain.,similarity:Contains 19 C2H2-type zinc fingers.,
Background	zinc finger protein 420(ZNF420) Homo sapiens The protein encoded by this gene is a KRAB-type zinc finger protein that negatively-regulates p53-mediated apoptosis. Under stress conditions, the encoded protein is phosphorylated by ATM and dissociates from p53, which activates p53 and initiates apoptosis. [provided by RefSeq, Jul 2016],

Nanjing BYabscience technology Co.,Ltd



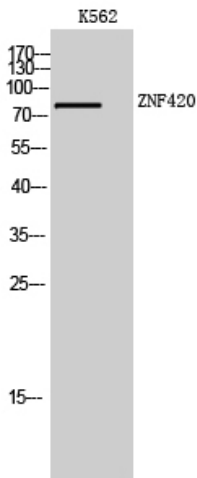
matters needing attention

Avoid repeated freezing and thawing!

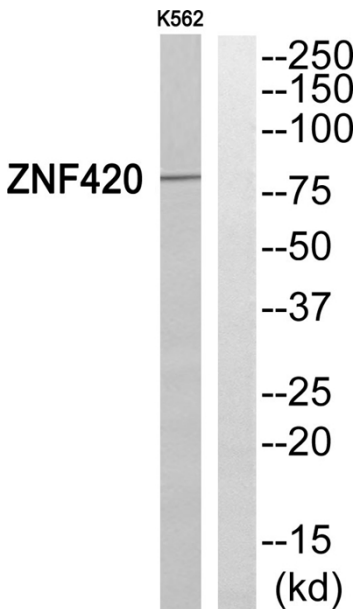
Usage suggestions

This product can be used in immunological reaction related experiments. For more information, please consult technical personnel.

Products Images

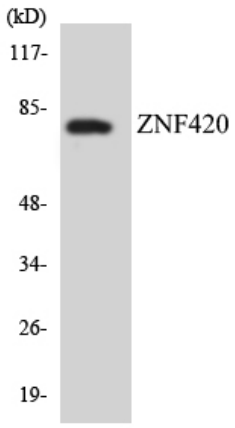


Western Blot analysis of K562 cells using ZNF420 Polyclonal Antibody. Secondary antibody(catalog#:RS0002) was diluted at 1:20000 cells nucleus extracted by Minute TM Cytoplasmic and Nuclear Fractionation kit (SC-003, Inventbiotech, MN, USA).



Western blot analysis of ZNF420 Antibody. The lane on the right is blocked with the ZNF420 peptide.

Nanjing BYabscience technology Co.,Ltd



Western blot analysis of the lysates from COLO205 cells using ZNF420 antibody.