



ZNF337 Polyclonal Antibody

Catalog No	BYab-02185
Isotype	IgG
Reactivity	Human;Rat;Mouse;
Applications	WB;IHC;IF;ELISA
Gene Name	ZNF337
Protein Name	Zinc finger protein 337
Immunogen	The antiserum was produced against synthesized peptide derived from human ZNF337. AA range:471-520
Specificity	ZNF337 Polyclonal Antibody detects endogenous levels of ZNF337 protein.
Formulation	Liquid in PBS containing 50% glycerol, 0.5% BSA and 0.02% sodium azide.
Source	Polyclonal, Rabbit,IgG
Purification	The antibody was affinity-purified from rabbit antiserum by affinity-chromatography using epitope-specific immunogen.
Dilution	Western Blot: 1/500 - 1/2000. Immunohistochemistry: 1/100 - 1/300. Immunofluorescence: 1/200 - 1/1000. ELISA: 1/20000. Not yet tested in other applications.
Concentration	1 mg/ml
Purity	≥90%
Storage Stability	-20°C/1 year
Synonyms	ZNF337; Zinc finger protein 337
Observed Band	86kD
Cell Pathway	Nucleus .
Tissue Specificity	Brain,Lung,
Function	function:May be involved in transcriptional regulation.,similarity:Belongs to the krueppel C2H2-type zinc-finger protein family.,similarity:Contains 1 KRAB domain.,similarity:Contains 20 C2H2-type zinc fingers.,
Background	zinc finger protein 337(ZNF337) Homo sapiens This gene encodes a zinc finger domain containing protein. The function of this protein has yet to be determined. Alternative splicing results in multiple transcript variants. [provided by RefSeq, Mar 2014],

Nanjing BYabscience technology Co.,Ltd



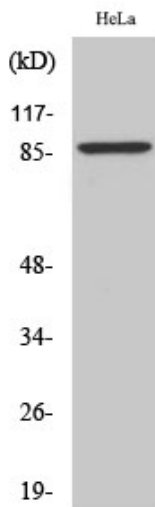
matters needing attention

Avoid repeated freezing and thawing!

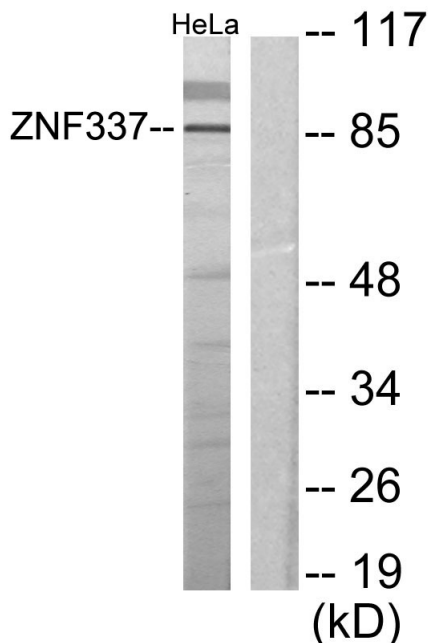
Usage suggestions

This product can be used in immunological reaction related experiments. For more information, please consult technical personnel.

Products Images

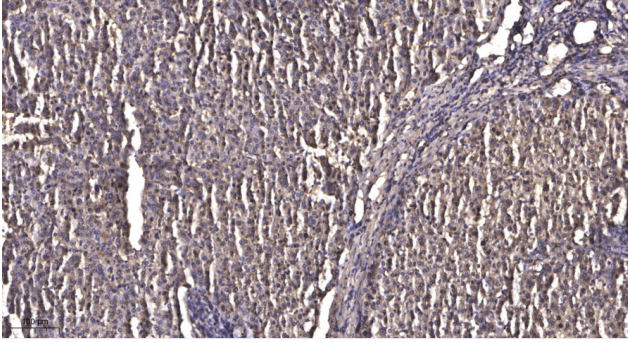


Western Blot analysis of various cells using ZNF337 Polyclonal Antibody. Secondary antibody(catalog#:RS0002) was diluted at 1:20000 cells nucleus extracted by Minute TM Cytoplasmic and Nuclear Fractionation kit (SC-003, Inventbiotech, MN, USA).



Western blot analysis of lysates from HeLa cells, using ZNF337 Antibody. The lane on the right is blocked with the synthesized peptide.

Nanjing BYabscience technology Co.,Ltd



Immunohistochemical analysis of paraffin-embedded human liver cancer. 1, Antibody was diluted at 1:200(4° overnight). 2, Tris-EDTA,pH9.0 was used for antigen retrieval. 3,Secondary antibody was diluted at 1:200(room temperature, 45min).