



ZNF232 Polyclonal Antibody

Catalog No	BYab-02180
Isotype	IgG
Reactivity	Human;Rat;Mouse;
Applications	IHC;IF;ELISA
Gene Name	ZNF232
Protein Name	Zinc finger protein 232
Immunogen	The antiserum was produced against synthesized peptide derived from human ZNF232. AA range:171-220
Specificity	ZNF232 Polyclonal Antibody detects endogenous levels of ZNF232 protein.
Formulation	Liquid in PBS containing 50% glycerol, 0.5% BSA and 0.02% sodium azide.
Source	Polyclonal, Rabbit,IgG
Purification	The antibody was affinity-purified from rabbit antiserum by affinity-chromatography using epitope-specific immunogen.
Dilution	IHC: 1/100 - 1/300. ELISA: 1/5000.. IF 1:50-200
Concentration	1 mg/ml
Purity	≥90%
Storage Stability	-20°C/1 year
Synonyms	ZNF232; ZSCAN11; Zinc finger protein 232; Zinc finger and SCAN domain-containing protein 11
Observed Band	
Cell Pathway	Nucleus.
Tissue Specificity	Ubiquitous. Higher expression seen in the liver, testis and ovary.
Function	function:May be involved in transcriptional regulation.,similarity:Belongs to the krueppel C2H2-type zinc-finger protein family.,similarity:Contains 1 SCAN box domain.,similarity:Contains 5 C2H2-type zinc fingers.,tissue specificity:Ubiquitous. Higher expression seen in the liver, testis and ovary.,
Background	function:May be involved in transcriptional regulation.,similarity:Belongs to the krueppel C2H2-type zinc-finger protein family.,similarity:Contains 1 SCAN box domain.,similarity:Contains 5 C2H2-type zinc fingers.,tissue specificity:Ubiquitous. Higher expression seen in the liver, testis and ovary.,

Nanjing BYabscience technology Co.,Ltd



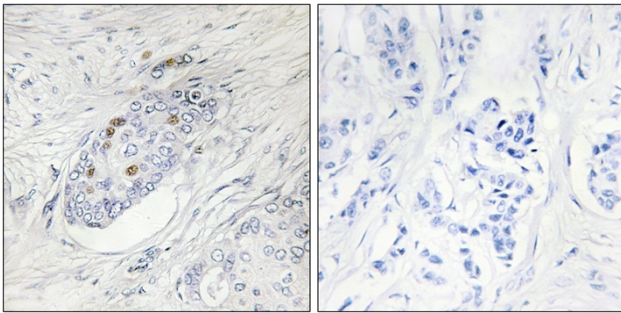
matters needing attention

Avoid repeated freezing and thawing!

Usage suggestions

This product can be used in immunological reaction related experiments. For more information, please consult technical personnel.

Products Images



Immunohistochemistry analysis of paraffin-embedded human breast carcinoma, using ZNF232 Antibody. The picture on the right is blocked with the synthesized peptide.