



ZNF23 Polyclonal Antibody

Catalog No	BYab-02179
Isotype	IgG
Reactivity	Human;Rat;Mouse;
Applications	WB;IHC;IF;ELISA
Gene Name	ZNF23
Protein Name	Zinc finger protein 23
Immunogen	The antiserum was produced against synthesized peptide derived from human ZNF23. AA range:151-200
Specificity	ZNF23 Polyclonal Antibody detects endogenous levels of ZNF23 protein.
Formulation	Liquid in PBS containing 50% glycerol, 0.5% BSA and 0.02% sodium azide.
Source	Polyclonal, Rabbit,IgG
Purification	The antibody was affinity-purified from rabbit antiserum by affinity-chromatography using epitope-specific immunogen.
Dilution	Western Blot: 1/500 - 1/2000. Immunohistochemistry: 1/100 - 1/300. Immunofluorescence: 1/200 - 1/1000. ELISA: 1/10000. Not yet tested in other applications.
Concentration	1 mg/ml
Purity	≥90%
Storage Stability	-20°C/1 year
Synonyms	ZNF23; KOX16; ZNF359; ZNF612; Zinc finger protein 23; Zinc finger protein 359; Zinc finger protein 612; Zinc finger protein KOX16
Observed Band	70kD
Cell Pathway	Nucleus .
Tissue Specificity	Atrial muscle,Brain,Hippocampus,Human small intestine,Lymphoid,Muscle,Substantia ni
Function	function:May be involved in transcriptional regulation. May have a role in embryonic development.,similarity:Belongs to the krueppel C2H2-type zinc-finger protein family.,similarity:Contains 1 KRAB domain.,similarity:Contains 17 C2H2-type zinc fingers.,
Background	function:May be involved in transcriptional regulation. May have a role in embryonic development.,similarity:Belongs to the krueppel C2H2-type zinc-finger protein family.,similarity:Contains 1 KRAB domain.,similarity:Contains 17 C2H2-type zinc fingers.,

Nanjing BYabscience technology Co.,Ltd



matters needing attention

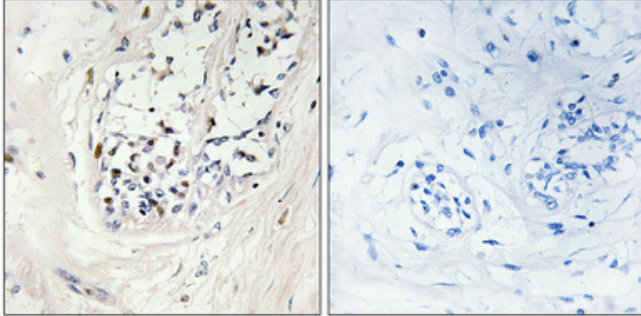
Avoid repeated freezing and thawing!

Usage suggestions

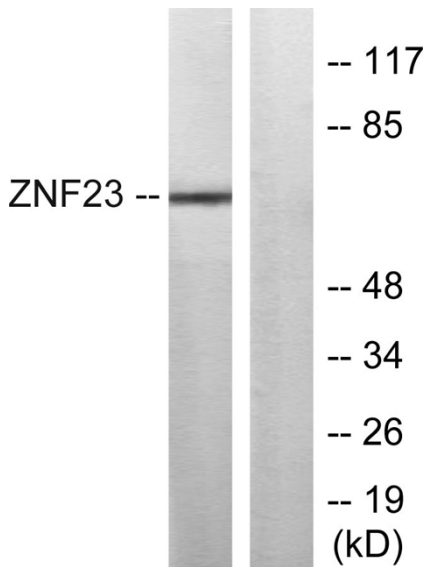
This product can be used in immunological reaction related experiments. For more information, please consult technical personnel.



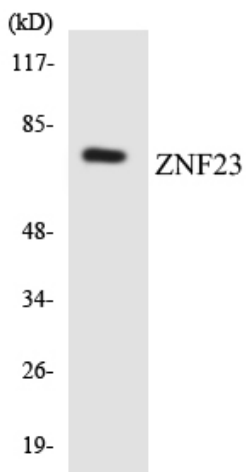
Products Images



Immunohistochemical analysis of paraffin-embedded Human breast cancer. Antibody was diluted at 1:100(4° overnight). High-pressure and temperature Tris-EDTA,pH8.0 was used for antigen retrieval. Negative contrl (right) obtaned from antibody was pre-absorbed by immunogen peptide.



Western blot analysis of lysates from LOVO cells, using ZNF23 Antibody. The lane on the right is blocked with the synthesized peptide.



Western blot analysis of the lysates from RAW264.7 cells using ZNF23 antibody.