



# ZN-16 Polyclonal Antibody

<b>Catalog No</b>	BYab-02176
<b>Isotype</b>	IgG
<b>Reactivity</b>	Human;Rat;Mouse;
<b>Applications</b>	WB;ELISA
<b>Gene Name</b>	ZNF292
<b>Protein Name</b>	Zinc finger protein 292
<b>Immunogen</b>	The antiserum was produced against synthesized peptide derived from human ZNF292. AA range:1311-1360
<b>Specificity</b>	ZN-16 Polyclonal Antibody detects endogenous levels of ZN-16 protein.
<b>Formulation</b>	Liquid in PBS containing 50% glycerol, 0.5% BSA and 0.02% sodium azide.
<b>Source</b>	Polyclonal, Rabbit,IgG
<b>Purification</b>	The antibody was affinity-purified from rabbit antiserum by affinity-chromatography using epitope-specific immunogen.
<b>Dilution</b>	Western Blot: 1/500 - 1/2000. ELISA: 1/40000. Not yet tested in other applications.
<b>Concentration</b>	1 mg/ml
<b>Purity</b>	≥90%
<b>Storage Stability</b>	-20°C/1 year
<b>Synonyms</b>	ZNF292; KIAA0530; Zinc finger protein 292
<b>Observed Band</b>	300kD
<b>Cell Pathway</b>	Nucleus .
<b>Tissue Specificity</b>	Bladder,Brain,Human endometrium,Placenta,Thalamus,
<b>Function</b>	function:May be involved in transcriptional regulation.,PTM:Phosphorylated upon DNA damage, probably by ATM or ATR.,similarity:Belongs to the krueppel C2H2-type zinc-finger protein family.,similarity:Contains 9 C2H2-type zinc fingers.,
<b>Background</b>	function:May be involved in transcriptional regulation.,PTM:Phosphorylated upon DNA damage, probably by ATM or ATR.,similarity:Belongs to the krueppel C2H2-type zinc-finger protein family.,similarity:Contains 9 C2H2-type zinc fingers.,

Nanjing BYabscience technology Co.,Ltd



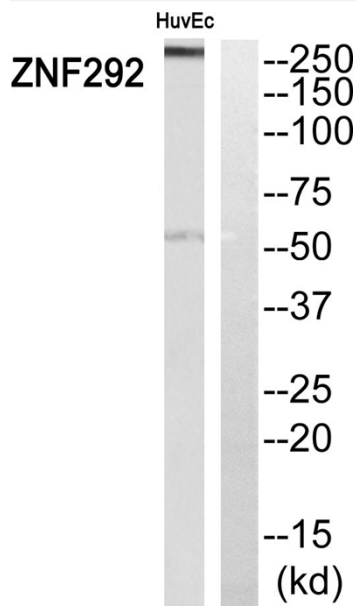
**matters needing attention**

Avoid repeated freezing and thawing!

**Usage suggestions**

This product can be used in immunological reaction related experiments. For more information, please consult technical personnel.

## Products Images



Western blot analysis of ZNF292 Antibody. The lane on the right is blocked with the ZNF292 peptide.

Nanjing BYabscience technology Co.,Ltd