



Zic1/2/3 Polyclonal Antibody

Catalog No	BYab-02172
Isotype	IgG
Reactivity	Human;Mouse
Applications	WB;IHC;IF;ELISA
Gene Name	ZIC1/ZIC2/ZIC3
Protein Name	Zinc finger protein ZIC 1
Immunogen	The antiserum was produced against synthesized peptide derived from human ZIC1/2/3. AA range:316-365
Specificity	Zic1/2/3 Polyclonal Antibody detects endogenous levels of Zic1/2/3 protein.
Formulation	Liquid in PBS containing 50% glycerol, 0.5% BSA and 0.02% sodium azide.
Source	Polyclonal, Rabbit,IgG
Purification	The antibody was affinity-purified from rabbit antiserum by affinity-chromatography using epitope-specific immunogen.
Dilution	Western Blot: 1/500 - 1/2000. Immunohistochemistry: 1/100 - 1/300. Immunofluorescence: 1/200 - 1/1000. ELISA: 1/20000. Not yet tested in other applications.
Concentration	1 mg/ml
Purity	≥90%
Storage Stability	-20°C/1 year
Synonyms	ZIC1; ZIC; ZNF201; Zinc finger protein ZIC 1; Zinc finger protein 201; Zinc finger protein of the cerebellum 1; ZIC2; Zinc finger protein ZIC 2; Zinc finger protein of the cerebellum 2; ZIC3; ZNF203; Zinc finger protein ZIC 3; Zinc finger p
Observed Band	51kD
Cell Pathway	Nucleus. Cytoplasm . Localizes in the cytoplasm in presence of MDFIC overexpression. .
Tissue Specificity	CNS. A high level expression is seen in the cerebellum. Detected in the nuclei of the cerebellar granule cell lineage from the progenitor cells of the external germinal layer to the postmigrated cells of the internal granular layer. Detected in medulloblastoma (26/29 cases), but not present in all other tumors examined.
Function	function:May play a role in cerebellar development.,similarity:Belongs to the GLI C2H2-type zinc-finger protein family.,similarity:Contains 5 C2H2-type zinc fingers.,tissue specificity:CNS. A high level expression is seen in the cerebellum. Detected in the nuclei of the cerebellar granule cell lineage from the progenitor cells of the external germinal layer to the postmigrated cells of the internal

Nanjing BYabscience technology Co.,Ltd



granular layer. Detected in medulloblastoma (26/29 cases), but not present in all other tumors examined.,

Background

This gene encodes a member of the ZIC family of C2H2-type zinc finger proteins. Members of this family are important during development. Aberrant expression of this gene is seen in medulloblastoma, a childhood brain tumor. This gene is closely linked to the gene encoding zinc finger protein of the cerebellum 4, a related family member on chromosome 3. This gene encodes a transcription factor that can bind and transactivate the apolipoprotein E gene. [provided by RefSeq, Jul 2008],

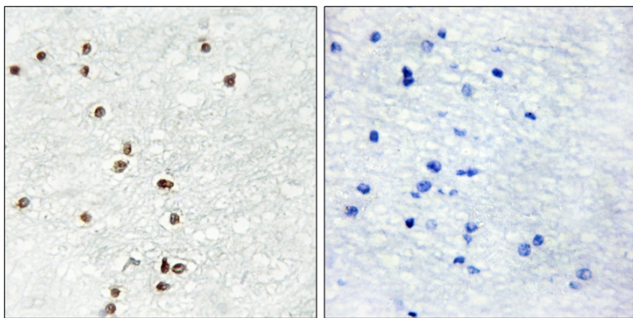
matters needing attention

Avoid repeated freezing and thawing!

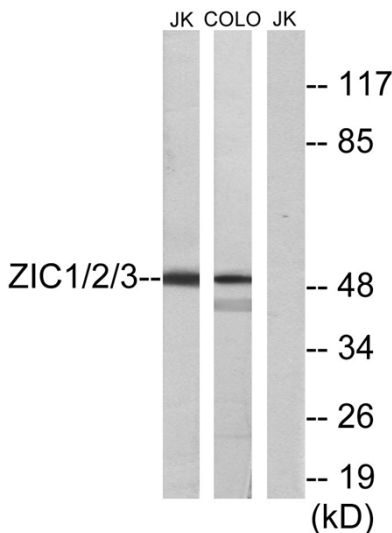
Usage suggestions

This product can be used in immunological reaction related experiments. For more information, please consult technical personnel.

Products Images



Immunohistochemistry analysis of paraffin-embedded human brain tissue, using ZIC1/2/3 Antibody. The picture on the right is blocked with the synthesized peptide.



Western blot analysis of lysates from Jurkat and COLO cells, using ZIC1/2/3 Antibody. The lane on the right is blocked with the synthesized peptide.