



ZFP106 Polyclonal Antibody

Catalog No	BYab-02169
Isotype	IgG
Reactivity	Human;Mouse;Monkey
Applications	WB;ELISA
Gene Name	ZFP106
Protein Name	Zinc finger protein 106 homolog
Immunogen	The antiserum was produced against synthesized peptide derived from human ZFP106. AA range:1833-1882
Specificity	ZFP106 Polyclonal Antibody detects endogenous levels of ZFP106 protein.
Formulation	Liquid in PBS containing 50% glycerol, 0.5% BSA and 0.02% sodium azide.
Source	Polyclonal, Rabbit,IgG
Purification	The antibody was affinity-purified from rabbit antiserum by affinity-chromatography using epitope-specific immunogen.
Dilution	Western Blot: 1/500 - 1/2000. ELISA: 1/10000. Not yet tested in other applications.
Concentration	1 mg/ml
Purity	≥90%
Storage Stability	-20°C/1 year
Synonyms	ZFP106; SH3BP3; ZNF474; Zinc finger protein 106 homolog; Zfp-106; Zinc finger protein 474
Observed Band	209kD
Cell Pathway	Nucleus, nucleolus . Nucleus speckle . Colocalizes with RBM39 in nuclear speckles. Inhibition of RNA synthesis, or overexpression of KNOP1, induces translocation from nuclear speckles to the nucleolus. .
Tissue Specificity	Epithelium,Human skeletal muscle,Prostate,Skeletal muscle,Testis,
Function	PTM:Phosphorylated upon DNA damage, probably by ATM or ATR.,sequence caution:Contaminating sequence. Potential poly-A sequence.,similarity:Contains 2 C2H2-type zinc fingers.,similarity:Contains 6 WD repeats.,subunit:Interacts with TSG118.,
Background	PTM:Phosphorylated upon DNA damage, probably by ATM or ATR.,sequence caution:Contaminating sequence. Potential poly-A sequence.,similarity:Contains 2 C2H2-type zinc fingers.,similarity:Contains 6 WD repeats.,subunit:Interacts with TSG118.,

Nanjing BYabscience technology Co.,Ltd



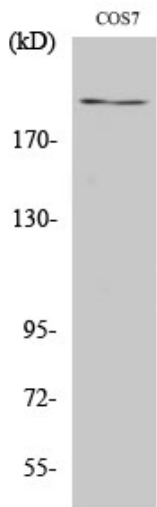
matters needing attention

Avoid repeated freezing and thawing!

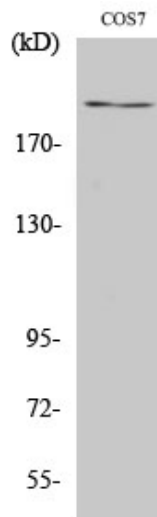
Usage suggestions

This product can be used in immunological reaction related experiments. For more information, please consult technical personnel.

Products Images

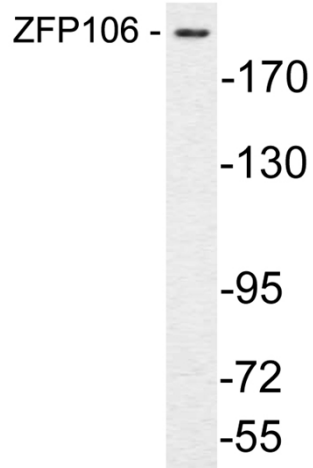


Western Blot analysis of various cells using ZFP106 Polyclonal Antibody. Secondary antibody(catalog#:RS0002) was diluted at 1:20000



Western Blot analysis of COS7 cells using ZFP106 Polyclonal Antibody. Secondary antibody(catalog#:RS0002) was diluted at 1:20000

Nanjing BYabscience technology Co.,Ltd



Western blot analysis of lysate from COS7 cells, using ZFP106 antibody.