



ZC3H4 Polyclonal Antibody

Catalog No	BYab-02166
Isotype	IgG
Reactivity	Human;Mouse
Applications	IHC;IF;ELISA
Gene Name	ZC3H4
Protein Name	Zinc finger CCCH domain-containing protein 4
Immunogen	The antiserum was produced against synthesized peptide derived from human ZC3H4. AA range:771-820
Specificity	ZC3H4 Polyclonal Antibody detects endogenous levels of ZC3H4 protein.
Formulation	Liquid in PBS containing 50% glycerol, 0.5% BSA and 0.02% sodium azide.
Source	Polyclonal, Rabbit,IgG
Purification	The antibody was affinity-purified from rabbit antiserum by affinity-chromatography using epitope-specific immunogen.
Dilution	IHC: 1/100 - 1/300. ELISA: 1/10000.. IF 1:50-200
Concentration	1 mg/ml
Purity	≥90%
Storage Stability	-20°C/1 year
Synonyms	ZC3H4; C19orf7; KIAA1064; Zinc finger CCCH domain-containing protein 4
Observed Band	
Cell Pathway	Chromosome . Recruited at sites of high RNA polymerase II occupancy. .
Tissue Specificity	Brain,Epithelium,Uterus,
Function	PTM:Phosphorylated upon DNA damage, probably by ATM or ATR.,similarity:Contains 3 C3H1-type zinc fingers.,
Background	This gene encodes a member of a family of CCCH (C-x8-C-x5-C-x3-H type) zinc finger domain-containing proteins. These zinc finger domains, which coordinate zinc finger binding and are characterized by three cysteine residues and one histidine residue, are nucleic acid-binding. Other family members are known to function in post-transcriptional regulation. [provided by RefSeq, Aug 2011],
matters needing attention	Avoid repeated freezing and thawing!

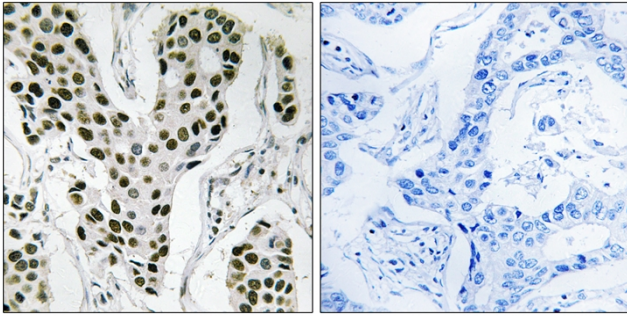
Nanjing BYabscience technology Co.,Ltd



Usage suggestions

This product can be used in immunological reaction related experiments. For more information, please consult technical personnel.

Products Images



Immunohistochemistry analysis of paraffin-embedded human breast carcinoma tissue, using ZC3H4 Antibody. The picture on the right is blocked with the synthesized peptide.