



# ZAC1 Polyclonal Antibody

<b>Catalog No</b>	BYab-02161
<b>Isotype</b>	IgG
<b>Reactivity</b>	Human;Rat;Mouse;
<b>Applications</b>	WB;ELISA
<b>Gene Name</b>	PLAGL1
<b>Protein Name</b>	Zinc finger protein PLAGL1
<b>Immunogen</b>	The antiserum was produced against synthesized peptide derived from human PLAGL1. AA range:311-360
<b>Specificity</b>	ZAC1 Polyclonal Antibody detects endogenous levels of ZAC1 protein.
<b>Formulation</b>	Liquid in PBS containing 50% glycerol, 0.5% BSA and 0.02% sodium azide.
<b>Source</b>	Polyclonal, Rabbit,IgG
<b>Purification</b>	The antibody was affinity-purified from rabbit antiserum by affinity-chromatography using epitope-specific immunogen.
<b>Dilution</b>	Western Blot: 1/500 - 1/2000. ELISA: 1/10000. Not yet tested in other applications.
<b>Concentration</b>	1 mg/ml
<b>Purity</b>	≥90%
<b>Storage Stability</b>	-20°C/1 year
<b>Synonyms</b>	PLAGL1; LOT1; ZAC; Zinc finger protein PLAGL1; Lost on transformation 1; LOT-1; Pleiomorphic adenoma-like protein 1; Tumor supressor ZAC
<b>Observed Band</b>	50kD
<b>Cell Pathway</b>	Nucleus .
<b>Tissue Specificity</b>	Colon,Fetal kidney,Lung,Mammary gland,Pituitary,Placenta,
<b>Function</b>	function:Shows weak transcriptional activatory activity. Transcriptional regulator of the type 1 receptor for pituitary adenylate cyclase-activating polypeptide.,similarity:Belongs to the krueppel C2H2-type zinc-finger protein family.,similarity:Contains 7 C2H2-type zinc fingers.,
<b>Background</b>	This gene encodes a C2H2 zinc finger protein that functions as a suppressor of cell growth. This gene is often deleted or methylated and silenced in cancer cells. In addition, overexpression of this gene during fetal development is thought to be the causal factor for transient neonatal diabetes mellitus (TNDM). Alternative splicing and the use of alternative promoters results in multiple transcript variants

Nanjing BYabscience technology Co.,Ltd



encoding two different protein isoforms. The P1 downstream promoter of this gene is imprinted, with preferential expression from the paternal allele in many tissues. [provided by RefSeq, Nov 2015],

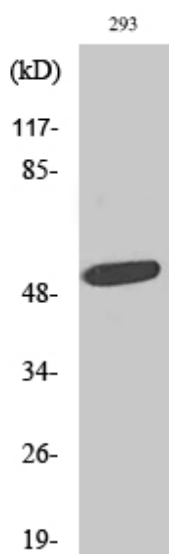
**matters needing attention**

Avoid repeated freezing and thawing!

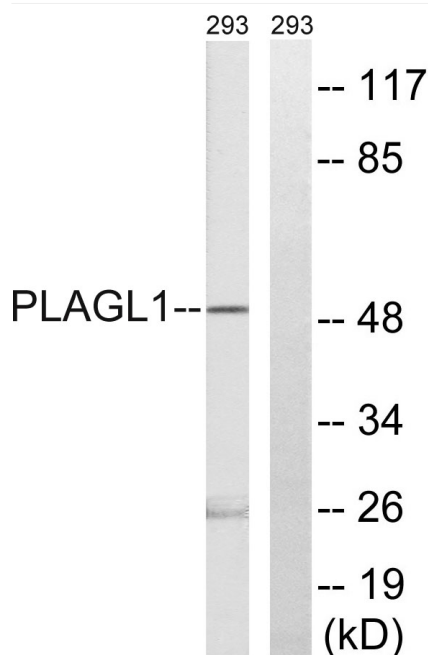
**Usage suggestions**

This product can be used in immunological reaction related experiments. For more information, please consult technical personnel.

**Products Images**

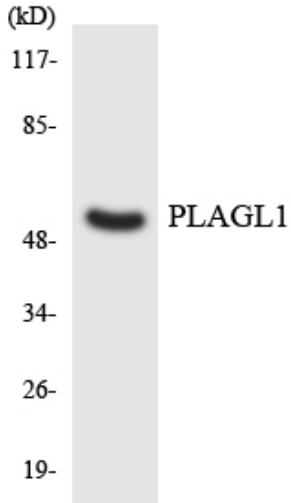


Western Blot analysis of various cells using ZAC1 Polyclonal Antibody. Secondary antibody(catalog#:RS0002) was diluted at 1:20000 cells nucleus extracted by Minute TM Cytoplasmic and Nuclear Fractionation kit (SC-003, Inventbiotech, MN, USA).



Western blot analysis of lysates from 293 cells, using PLAGL1 Antibody. The lane on the right is blocked with the synthesized peptide.

**Nanjing BYabscience technology Co.,Ltd**



Western blot analysis of the lysates from HeLa cells using PLAGL1 antibody.