



XRN2 Polyclonal Antibody

Catalog No	BYab-02157
Isotype	IgG
Reactivity	Human;Mouse;Monkey
Applications	WB;IHC;IF;ELISA
Gene Name	XRN2
Protein Name	5'-3' exoribonuclease 2
Immunogen	The antiserum was produced against synthesized peptide derived from human XRN2. AA range:81-130
Specificity	XRN2 Polyclonal Antibody detects endogenous levels of XRN2 protein.
Formulation	Liquid in PBS containing 50% glycerol, 0.5% BSA and 0.02% sodium azide.
Source	Polyclonal, Rabbit,IgG
Purification	The antibody was affinity-purified from rabbit antiserum by affinity-chromatography using epitope-specific immunogen.
Dilution	WB: 1/500 - 1/2000. IHC: 1/100 - 1/300. ELISA: 1/20000.. IF 1:50-200
Concentration	1 mg/ml
Purity	≥90%
Storage Stability	-20°C/1 year
Synonyms	XRN2; 5'-3' exoribonuclease 2; DHM1-like protein; DHP protein
Observed Band	108kD
Cell Pathway	Nucleus, nucleolus .
Tissue Specificity	Expressed in the spleen, thymus, prostate, testis, ovary, small intestine, colon, peripheral blood leukocytes, heart, brain, placenta, lung, liver, skeletal muscle, kidney, and pancreas. Isoform 2 is expressed predominantly in peripheral blood leukocytes.
Function	catalytic activity:Exonucleolytic cleavage in the 5'- to 3'-direction to yield nucleoside 5'-phosphates.,function:Possesses 5'->3' exoribonuclease activity (By similarity). May promote the termination of transcription by RNA polymerase II. During transcription termination, cleavage at the polyadenylation site liberates a 5' fragment which is subsequently processed to form the mature mRNA and a 3' fragment which remains attached to the elongating polymerase. The processive degradation of this 3' fragment by this protein may promote termination of transcription.,similarity:Belongs to the 5'-3' exonuclease family. XRN2/RAT1 subfamily.,similarity:Contains 1 CCHC-type zinc finger.,tissue

Nanjing BYabscience technology Co.,Ltd



specificity: Expressed in the spleen, thymus, prostate, testis, ovary, small intestine, colon, peripheral blood leukocytes, heart, brain, placenta, lung, liver, skeletal muscle, kidney, and pancreas. Isoform 2

Background

This gene encodes a 5'→3' exonuclease that promotes transcription termination at cotranscriptional cleavage sites. Alternative splicing results in multiple transcript variants encoding different isoforms. [provided by RefSeq, Dec 2015],

matters needing attention

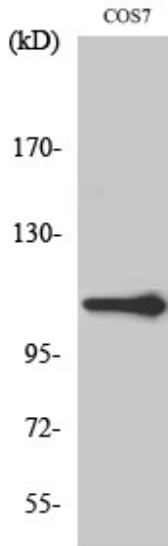
Avoid repeated freezing and thawing!

Usage suggestions

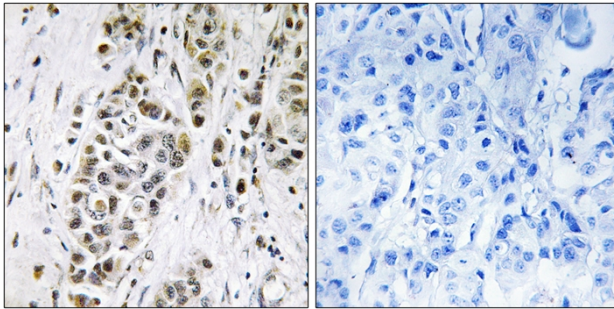
This product can be used in immunological reaction related experiments. For more information, please consult technical personnel.



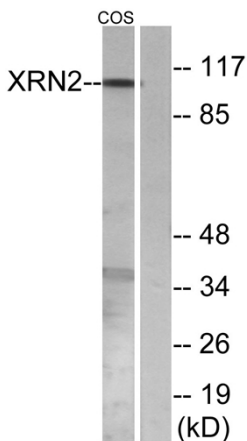
Products Images



Western Blot analysis of various cells using XRN2 Polyclonal Antibody diluted at 1:1000. Secondary antibody(catalog#:RS0002) was diluted at 1:20000 cells nucleus extracted by Minute TM Cytoplasmic and Nuclear Fractionation kit (SC-003, Inventbiotech, MN, USA).



Immunohistochemistry analysis of paraffin-embedded human breast carcinoma tissue, using XRN2 Antibody. The picture on the right is blocked with the synthesized peptide.



Western blot analysis of lysates from COS7 cells, using XRN2 Antibody. The lane on the right is blocked with the synthesized peptide.