



XE7 Polyclonal Antibody

Catalog No	BYab-02154
Isotype	IgG
Reactivity	Human;Rat;Mouse;
Applications	WB;ELISA
Gene Name	AKAP17A
Protein Name	A-kinase anchor protein 17A
Immunogen	Synthesized peptide derived from XE7 . at AA range: 590-670
Specificity	XE7 Polyclonal Antibody detects endogenous levels of XE7 protein.
Formulation	Liquid in PBS containing 50% glycerol, 0.5% BSA and 0.02% sodium azide.
Source	Polyclonal, Rabbit,IgG
Purification	The antibody was affinity-purified from rabbit antiserum by affinity-chromatography using epitope-specific immunogen.
Dilution	Western Blot: 1/500 - 1/2000. ELISA: 1/40000. Not yet tested in other applications.
Concentration	1 mg/ml
Purity	≥90%
Storage Stability	-20°C/1 year
Synonyms	AKAP17A; CXYorf3; DXYS155E; SFRS17A; XE7; A-kinase anchor protein 17A; AKAP-17A; 721P; B-lymphocyte antigen; Protein XE7; Protein kinase A-anchoring protein 17A; PRKA17A; Splicing factor; arginine/serine-rich 17A
Observed Band	80kD
Cell Pathway	Nucleus speckle .
Tissue Specificity	Widely expressed. Found in heart, brain, lung, liver, skeletal muscle, kidney and pancreas. Expressed in activated B-cells and placenta. Expressed in all cell lines tested including Jurkat-TAg, U-937 and HEK293 cells.
Function	caution:Was originally (PubMed:1438229) thought to be a cell surface protein involved in B-cell activation.,function:Splice factor regulating alternative splice site selection for certain mRNA precursors.,miscellaneous:The gene encoding for this protein is located in the pseudoautosomal region 1 (PAR1) of X and Y chromosomes.,similarity:Contains 1 RRM (RNA recognition motif) domain.,subunit:Monomer. Component of the spliceosome. Interacts with ZRANB2 and SFRS1/ASF through its Arg/Ser-rich domain.,tissue specificity:Widely expressed. Found in heart, brain, lung, liver, skeletal muscle,

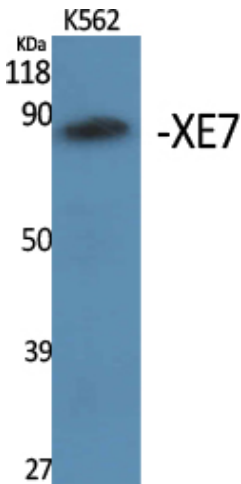
Nanjing BYabscience technology Co.,Ltd



kidney and pancreas. Expressed in activated B-cells and placenta.,

Background	A-kinase anchoring protein 17A(AKAP17A) Homo sapiens This locus encodes a protein kinase A anchoring protein. The encoded protein is part of the spliceosome complex and is involved in the regulation of alternate splicing in some mRNA precursors. Alternatively spliced transcript variants have been identified for this gene.[provided by RefSeq, Sep 2010],
matters needing attention	Avoid repeated freezing and thawing!
Usage suggestions	This product can be used in immunological reaction related experiments. For more information, please consult technical personnel.

Products Images



Western Blot analysis of various cells using XE7 Polyclonal Antibody. Secondary antibody(catalog#:RS0002) was diluted at 1:20000 cells nucleus extracted by Minute TM Cytoplasmic and Nuclear Fractionation kit (SC-003,Inventbiotech,MN,USA).

Nanjing BYabscience technology Co.,Ltd