



UBN-1 Polyclonal Antibody

Catalog No	BYab-02149
Isotype	IgG
Reactivity	Human;Mouse
Applications	WB;IHC;IF;ELISA
Gene Name	UBN1
Protein Name	Ubinuclein-1
Immunogen	The antiserum was produced against synthesized peptide derived from human Ubinuclein. AA range:161-210
Specificity	UBN-1 Polyclonal Antibody detects endogenous levels of UBN-1 protein.
Formulation	Liquid in PBS containing 50% glycerol, 0.5% BSA and 0.02% sodium azide.
Source	Polyclonal, Rabbit,IgG
Purification	The antibody was affinity-purified from rabbit antiserum by affinity-chromatography using epitope-specific immunogen.
Dilution	Immunohistochemistry: 1/100 - 1/300. Immunofluorescence: 1/200 - 1/1000. ELISA: 1/10000. Not yet tested in other applications.
Concentration	1 mg/ml
Purity	≥90%
Storage Stability	-20°C/1 year
Synonyms	UBN1; Ubinuclein-1; HIRA-binding protein; Protein VT4; Ubiquitously expressed nuclear protein
Observed Band	
Cell Pathway	Nucleus, nucleoplasm. Nucleus, PML body. Cell junction, tight junction. Localized as a nuclear speckled-like pattern in proliferating primary fibroblasts. Colocalizes with HIRA, PML and SP100 in PML bodies of senescent cells. Colocalizes with TJP1 and CLDN1. Detected along the upper granular cell layer of epidermis. When overexpressed, accumulates in the nucleus in cells showing defective cytokinesis.
Tissue Specificity	Ubiquitous. Also expressed in numerous tumors and cancer cell lines.
Function	function:Acts as a novel regulator of senescence. Involved in the formation of senescence-associated heterochromatin foci (SAHF), which represses expression of proliferation-promoting genes. Binds to proliferation-promoting genes. May be required for replication-independent chromatin assembly.,similarity:Belongs to the ubinuclein family.,subcellular location:Localized as a nuclear speckled-like pattern in proliferating primary

Nanjing BYabscience technology Co.,Ltd



fibroblasts. Colocalizes with HIRA, PML and SP100 in PML bodies of senescent cells. Colocalizes with TJP1 and CLDN1. Detected along the upper granular cell layer of epidermis. When overexpressed, accumulates in the nucleus in cells showing defective cytokinesis. **subunit:**Component of a complex that includes at least ASF1A, CABIN1, HIRA, histone H3.3 and UBN1. Interacts with Epstein-Barr virus BZLF1. Interacts with HIRA (via WD repeat domain); the interaction is dire

Background

function:Acts as a novel regulator of senescence. Involved in the formation of senescence-associated heterochromatin foci (SAHF), which represses expression of proliferation-promoting genes. Binds to proliferation-promoting genes. May be required for replication-independent chromatin assembly. **similarity:**Belongs to the ubinuclein family. **subcellular location:**Localized as a nuclear speckled-like pattern in proliferating primary fibroblasts. Colocalizes with HIRA, PML and SP100 in PML bodies of senescent cells. Colocalizes with TJP1 and CLDN1. Detected along the upper granular cell layer of epidermis. When overexpressed, accumulates in the nucleus in cells showing defective cytokinesis. **subunit:**Component of a complex that includes at least ASF1A, CABIN1, HIRA, histone H3.3 and UBN1. Interacts with Epstein-Barr virus BZLF1. Interacts with HIRA (via WD repeat domain); the interaction is direct. Interacts with ASF1A, CEBPA, TJP1, TJP2 and TJP3. **tissue specificity:**Ubiquitous. Also expressed in numerous tumors and cancer cell lines. ,

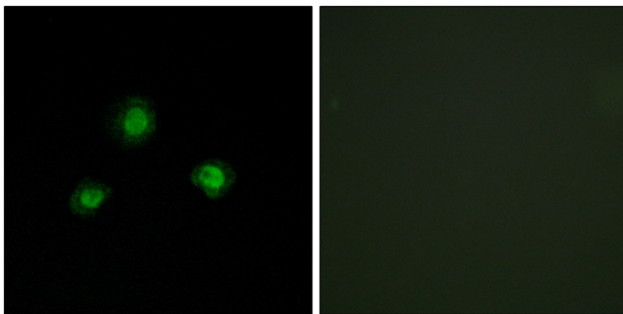
matters needing attention

Avoid repeated freezing and thawing!

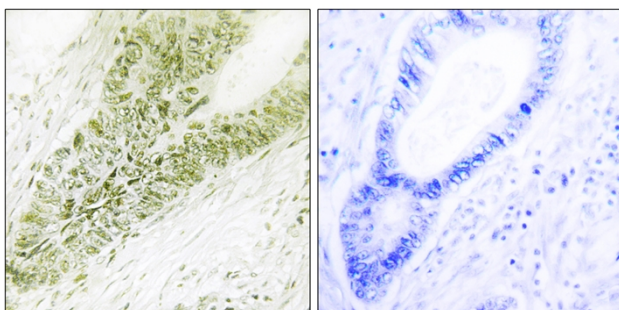
Usage suggestions

This product can be used in immunological reaction related experiments. For more information, please consult technical personnel.

Products Images



Immunofluorescence analysis of A549 cells, using Ubinuclein Antibody. The picture on the right is blocked with the synthesized peptide.



Immunohistochemistry analysis of paraffin-embedded human colon carcinoma tissue, using Ubinuclein Antibody. The picture on the right is blocked with the synthesized peptide.

Nanjing BYabscience technology Co.,Ltd