



# UBCE7IP4 Polyclonal Antibody

<b>Catalog No</b>	BYab-02146
<b>Isotype</b>	IgG
<b>Reactivity</b>	Human;Mouse
<b>Applications</b>	WB;ELISA
<b>Gene Name</b>	RNF144A
<b>Protein Name</b>	Probable E3 ubiquitin-protein ligase RNF144A
<b>Immunogen</b>	The antiserum was produced against synthesized peptide derived from human RNF144A. AA range:151-200
<b>Specificity</b>	UBCE7IP4 Polyclonal Antibody detects endogenous levels of UBCE7IP4 protein.
<b>Formulation</b>	Liquid in PBS containing 50% glycerol, 0.5% BSA and 0.02% sodium azide.
<b>Source</b>	Polyclonal, Rabbit,IgG
<b>Purification</b>	The antibody was affinity-purified from rabbit antiserum by affinity-chromatography using epitope-specific immunogen.
<b>Dilution</b>	Western Blot: 1/500 - 1/2000. ELISA: 1/40000. Not yet tested in other applications.
<b>Concentration</b>	1 mg/ml
<b>Purity</b>	≥90%
<b>Storage Stability</b>	-20°C/1 year
<b>Synonyms</b>	RNF144A; KIAA0161; RNF144; UBCE7IP4; Probable E3 ubiquitin-protein ligase RNF144A; RING finger protein 144A; UbcM4-interacting protein 4; Ubiquitin-conjugating enzyme 7-interacting protein 4
<b>Observed Band</b>	30kD
<b>Cell Pathway</b>	Cell membrane ; Single-pass membrane protein . Cytoplasmic vesicle membrane
<b>Tissue Specificity</b>	Bone marrow,Ovary,
<b>Function</b>	caution:Lacks the His residue in the RING-type domain 2 that is one of the conserved features of the family.,function:E3 ubiquitin-protein ligase which accepts ubiquitin from E2 ubiquitin-conjugating enzymes UBE2L3 and UBE2L6 in the form of a thioester and then directly transfers the ubiquitin to targeted substrates.,pathway:Protein modification; protein ubiquitination.,similarity:Belongs to the RBR family. RNF144 subfamily.,similarity:Contains 1 IBR-type zinc finger.,similarity:Contains 2 RING-type zinc fingers.,subunit:Interacts with UBE2L3.,

Nanjing BYabscience technology Co.,Ltd



**Background**

The protein encoded by this protein contains a RING finger, a motif known to be involved in protein-DNA and protein-protein interactions. The mouse counterpart of this protein has been shown to interact with Ube2I3/UbcM4, which is an ubiquitin-conjugating enzyme involved in embryonic development. [provided by RefSeq, Jul 2008],

**matters needing attention**

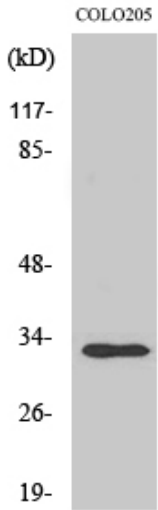
Avoid repeated freezing and thawing!

**Usage suggestions**

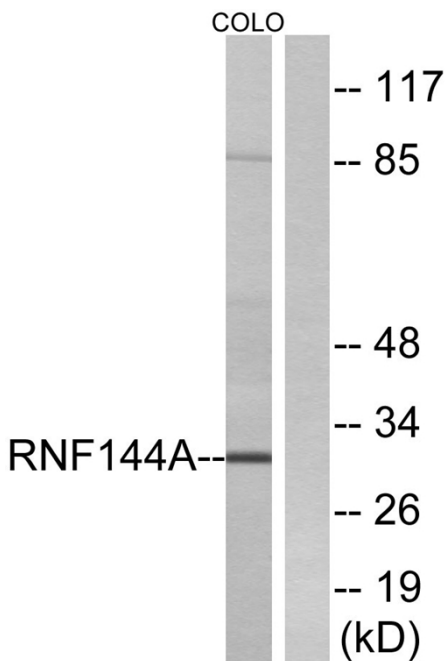
This product can be used in immunological reaction related experiments. For more information, please consult technical personnel.



## Products Images



Western Blot analysis of various cells using UBCE7IP4 Polyclonal Antibody. Secondary antibody(catalog#:RS0002) was diluted at 1:20000



Western blot analysis of lysates from COLO cells, using RNF144A Antibody. The lane on the right is blocked with the synthesized peptide.