



TSHZ2 Polyclonal Antibody

Catalog No	BYab-02143
Isotype	IgG
Reactivity	Human;Mouse
Applications	IHC;IF;ELISA
Gene Name	TSHZ2
Protein Name	Teashirt homolog 2
Immunogen	The antiserum was produced against synthesized peptide derived from human TSH2. AA range:811-860
Specificity	TSHZ2 Polyclonal Antibody detects endogenous levels of TSHZ2 protein.
Formulation	Liquid in PBS containing 50% glycerol, 0.5% BSA and 0.02% sodium azide.
Source	Polyclonal, Rabbit,IgG
Purification	The antibody was affinity-purified from rabbit antiserum by affinity-chromatography using epitope-specific immunogen.
Dilution	Immunohistochemistry: 1/100 - 1/300. Immunofluorescence: 1/200 - 1/1000. ELISA: 1/20000. Not yet tested in other applications.
Concentration	1 mg/ml
Purity	≥90%
Storage Stability	-20°C/1 year
Synonyms	TSHZ2; C20orf17; TSH2; ZNF218; Teashirt homolog 2; Ovarian cancer-related protein 10-2; OVC10-2; Zinc finger protein 218
Observed Band	
Cell Pathway	Nucleus .
Tissue Specificity	Expressed in brain; strongly reduced in post-mortem elderly subjects with Alzheimer disease.
Function	function:Transcriptional regulator involved in developmental processes .,PTM:Sumoylated.,sequence caution:The sequence differs from that shown due translation of a 3'-UTR region.,similarity:Belongs to the teashirt C2H2-type zinc-finger protein family.,similarity:Contains 1 homeobox DNA-binding domain.,similarity:Contains 5 C2H2-type zinc fingers.,
Background	function:Transcriptional regulator involved in developmental processes .,PTM:Sumoylated.,sequence caution:The sequence differs from that shown due translation of a 3'-UTR region.,similarity:Belongs to the teashirt C2H2-type zinc-finger protein family.,similarity:Contains 1 homeobox DNA-binding

Nanjing BYabscience technology Co.,Ltd



domain.,similarity:Contains 5 C2H2-type zinc fingers.,

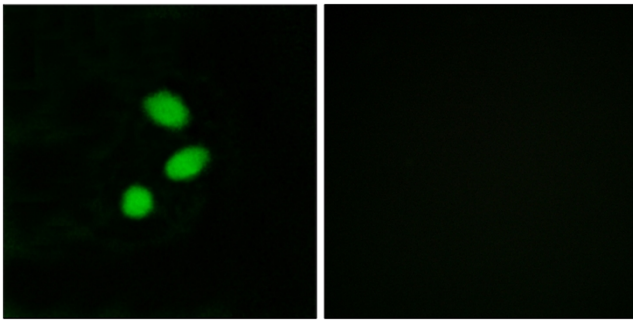
matters needing attention

Avoid repeated freezing and thawing!

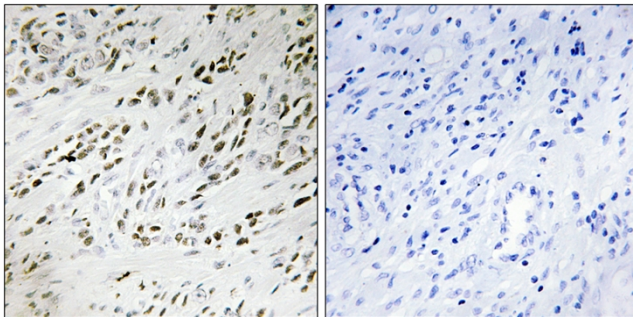
Usage suggestions

This product can be used in immunological reaction related experiments. For more information, please consult technical personnel.

Products Images



Immunofluorescence analysis of MCF7 cells, using TSH2 Antibody. The picture on the right is blocked with the synthesized peptide.



Immunohistochemistry analysis of paraffin-embedded human prostate carcinoma tissue, using TSH2 Antibody. The picture on the right is blocked with the synthesized peptide.

Nanjing BYabscience technology Co.,Ltd