



# Tra-2 $\alpha$ Polyclonal Antibody

<b>Catalog No</b>	BYab-02128
<b>Isotype</b>	IgG
<b>Reactivity</b>	Human;Mouse
<b>Applications</b>	WB;IHC;IF;ELISA
<b>Gene Name</b>	TRA2A
<b>Protein Name</b>	Transformer-2 protein homolog alpha
<b>Immunogen</b>	The antiserum was produced against synthesized peptide derived from human TRA-2 alpha. AA range:221-270
<b>Specificity</b>	Tra-2 $\alpha$ Polyclonal Antibody detects endogenous levels of Tra-2 $\alpha$ protein.
<b>Formulation</b>	Liquid in PBS containing 50% glycerol, 0.5% BSA and 0.02% sodium azide.
<b>Source</b>	Polyclonal, Rabbit,IgG
<b>Purification</b>	The antibody was affinity-purified from rabbit antiserum by affinity-chromatography using epitope-specific immunogen.
<b>Dilution</b>	Western Blot: 1/500 - 1/2000. Immunohistochemistry: 1/100 - 1/300. Immunofluorescence: 1/200 - 1/1000. ELISA: 1/20000. Not yet tested in other applications.
<b>Concentration</b>	1 mg/ml
<b>Purity</b>	≥90%
<b>Storage Stability</b>	-20°C/1 year
<b>Synonyms</b>	TRA2A; Transformer-2 protein homolog alpha; TRA-2 alpha; TRA2-alpha; Transformer-2 protein homolog A
<b>Observed Band</b>	33kD
<b>Cell Pathway</b>	Nucleus .
<b>Tissue Specificity</b>	Cervix carcinoma,Epithelium,Hepatocyte,Lung,Testis,Uterus,
<b>Function</b>	function:Sequence-specific RNA-binding protein which participates in the control of pre-mRNA splicing.,PTM:Phosphorylated in the RS domains.,similarity:Belongs to the splicing factor SR family.,similarity:Contains 1 RRM (RNA recognition motif) domain.,subunit:Binds to A3 enhancer proteins SRp75, SRp55, SRp40 and SRp30.,
<b>Background</b>	This gene is a member of the transformer 2 homolog family and encodes a protein with several RRM (RNA recognition motif) domains. This phosphorylated nuclear protein binds to specific RNA sequences and plays a role in the regulation

Nanjing BYabscience technology Co.,Ltd



of pre-mRNA splicing. Alternatively spliced transcript variants have been found for this gene. [provided by RefSeq, Sep 2013],

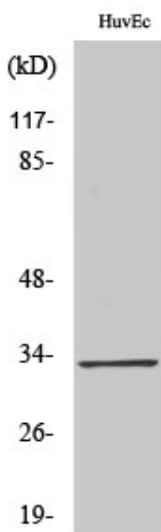
**matters needing attention**

Avoid repeated freezing and thawing!

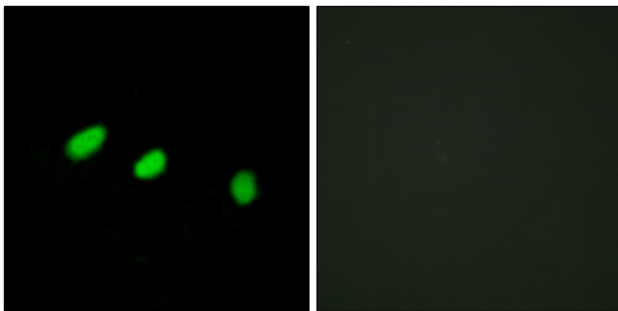
**Usage suggestions**

This product can be used in immunological reaction related experiments. For more information, please consult technical personnel.

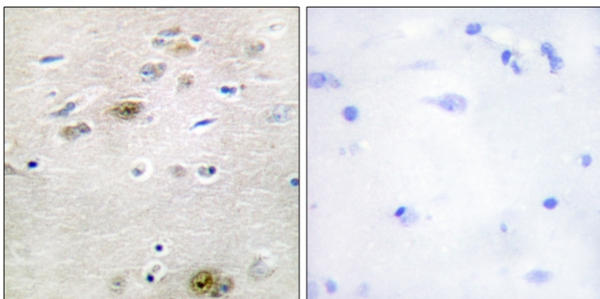
**Products Images**



Western Blot analysis of various cells using Tra-2 $\alpha$  Polyclonal Antibody diluted at 1:500. Secondary antibody(catalog#:RS0002) was diluted at 1:20000 cells nucleus extracted by Minute TM Cytoplasmic and Nuclear Fractionation kit (SC-003, Inventbiotech, MN, USA).

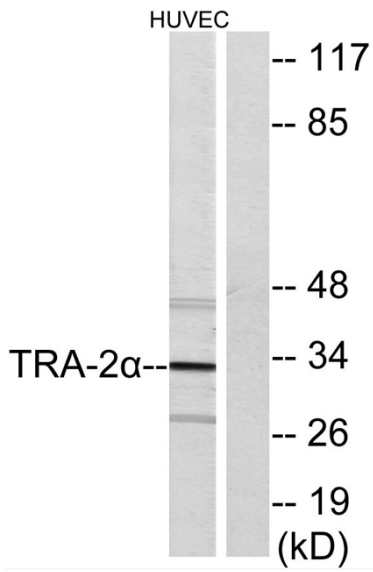


Immunofluorescence analysis of HeLa cells, using TRA-2 alpha Antibody. The picture on the right is blocked with the synthesized peptide.



Immunohistochemistry analysis of paraffin-embedded human brain tissue, using TRA-2 alpha Antibody. The picture on the right is blocked with the synthesized peptide.

**Nanjing BYabscience technology Co.,Ltd**



Western blot analysis of lysates from HUVEC cells, using TRA-2 alpha Antibody. The lane on the right is blocked with the synthesized peptide.