



TLE2 Polyclonal Antibody

Catalog No	BYab-02121
Isotype	IgG
Reactivity	Human;Rat;Mouse;
Applications	WB;IHC;IF;ELISA
Gene Name	TLE2
Protein Name	Transducin-like enhancer protein 2
Immunogen	The antiserum was produced against synthesized peptide derived from human TLE2. AA range:211-260
Specificity	TLE2 Polyclonal Antibody detects endogenous levels of TLE2 protein.
Formulation	Liquid in PBS containing 50% glycerol, 0.5% BSA and 0.02% sodium azide.
Source	Polyclonal, Rabbit,IgG
Purification	The antibody was affinity-purified from rabbit antiserum by affinity-chromatography using epitope-specific immunogen.
Dilution	WB: 1/500 - 1/2000. IHC: 1/100 - 1/300. ELISA: 1/20000.. IF 1:50-200
Concentration	1 mg/ml
Purity	≥90%
Storage Stability	-20°C/1 year
Synonyms	TLE2; Transducin-like enhancer protein 2; Enhancer of split groucho-like protein 2; ESG2
Observed Band	110kD
Cell Pathway	Nucleus.
Tissue Specificity	In all tissues examined, mostly in heart, brain, and muscle.
Function	function:Transcriptional corepressor that binds to a number of transcription factors. Inhibits the transcriptional activation mediated by CTNNB1 and TCF family members in Wnt signaling. The effects of full-length TLE family members may be modulated by association with dominant-negative AES.,similarity:Belongs to the WD repeat Groucho/TLE family.,similarity:Contains 6 WD repeats.,subunit:Homooligomer and heterooligomer with other family members. Binds LEF1, TCF7, TCF7L1, TCF7L2, UTY, HES1 and HES5.,tissue specificity:In all tissues examined, mostly in heart, brain, and muscle.,

Nanjing BYabscience technology Co.,Ltd



Background

function:Transcriptional corepressor that binds to a number of transcription factors. Inhibits the transcriptional activation mediated by CTNNB1 and TCF family members in Wnt signaling. The effects of full-length TLE family members may be modulated by association with dominant-negative AES.,similarity:Belongs to the WD repeat Groucho/TLE family.,similarity:Contains 6 WD repeats.,subunit:Homooligomer and heterooligomer with other family members. Binds LEF1, TCF7, TCF7L1, TCF7L2, UTY, HES1 and HES5.,tissue specificity:In all tissues examined, mostly in heart, brain, and muscle.,

matters needing attention

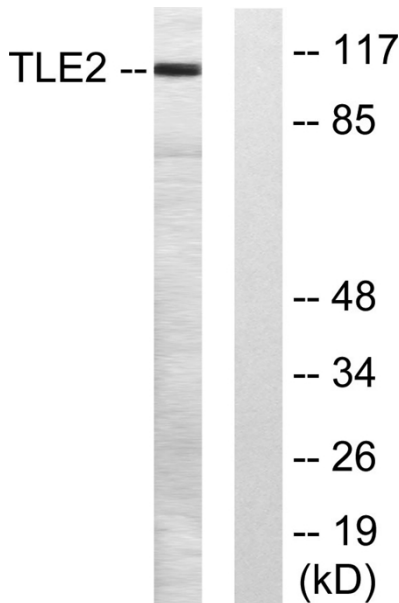
Avoid repeated freezing and thawing!

Usage suggestions

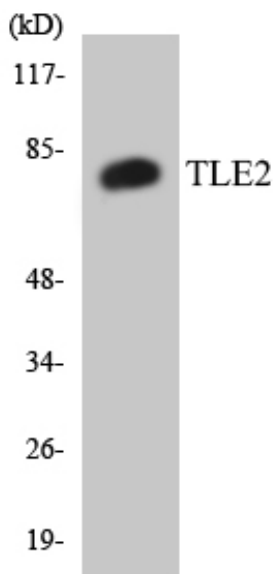
This product can be used in immunological reaction related experiments. For more information, please consult technical personnel.



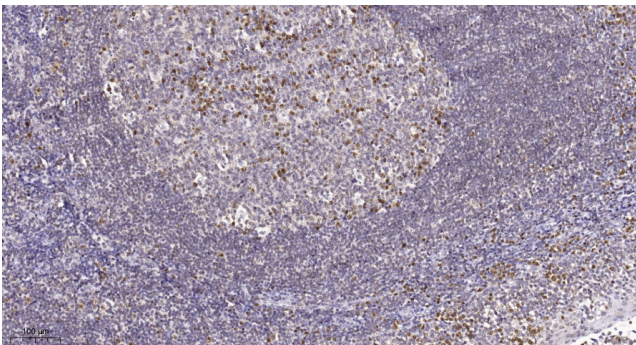
Products Images



Western blot analysis of lysates from LOVO cells, using TLE2 Antibody. The lane on the right is blocked with the synthesized peptide.



Western blot analysis of the lysates from HT-29 cells using TLE2 antibody.



Immunohistochemical analysis of paraffin-embedded human tonsil. 1, Tris-EDTA, pH9.0 was used for antigen retrieval. 2 Antibody was diluted at 1:200(4° overnight). 3, Secondary antibody was diluted at 1:200(room temperature, 45min).

Nanjing BYabscience technology Co.,Ltd



Nanjing BYabscience technology Co.,Ltd

网址: www.njbybio.com

官方热线: 025-5229-8998

监督电话: 15950492658