



TIEG2 Polyclonal Antibody

Catalog No	BYab-02115
Isotype	IgG
Reactivity	Human;Mouse
Applications	WB;IHC;IF;ELISA
Gene Name	KLF11
Protein Name	Krueppel-like factor 11
Immunogen	The antiserum was produced against synthesized peptide derived from human KLF11. AA range:1-50
Specificity	TIEG2 Polyclonal Antibody detects endogenous levels of TIEG2 protein.
Formulation	Liquid in PBS containing 50% glycerol, 0.5% BSA and 0.02% sodium azide.
Source	Polyclonal, Rabbit,IgG
Purification	The antibody was affinity-purified from rabbit antiserum by affinity-chromatography using epitope-specific immunogen.
Dilution	Western Blot: 1/500 - 1/2000. Immunohistochemistry: 1/100 - 1/300. Immunofluorescence: 1/200 - 1/1000. ELISA: 1/20000. Not yet tested in other applications.
Concentration	1 mg/ml
Purity	≥90%
Storage Stability	-20°C/1 year
Synonyms	KLF11; FKLF; TIEG2; Krueppel-like factor 11; Transforming growth factor-beta-inducible early growth response protein 2; TGFB-inducible early growth response protein 2; TIEG-2
Observed Band	55kD
Cell Pathway	Nucleus .
Tissue Specificity	Ubiquitous. Higher expression in erythroid cells.
Function	caution:PubMed:11087666 sequence was originally thought to originate from mouse.,disease:Defects in KLF11 are the cause of maturity-onset diabetes of the young type 7 (MODY7) [MIM:610508]. MODY [MIM:606391] has an autosomal dominant inheritance, onset at age less than 25 years and a primary defect in insulin secretion. MODY pedigrees are usually multigenerational families with penetrance of 80 to 95%. Patients have a nonobese body habitus and the so-called metabolic syndrome characterized by diabetes, insulin resistance, hypertension, and hypertriglyceridemia is absent.,function:Transcription factor.

Nanjing BYabscience technology Co.,Ltd



Activates the epsilon- and gamma-globin gene promoters and, to a much lower degree, the beta-globin gene and represses promoters containing SP1-like binding inhibiting cell growth. Represses transcription of SMAD7 which enhances TGF-beta signaling. Induces apoptosis.,induction:By TGF-beta.,s

Background

The protein encoded by this gene is a zinc finger transcription factor that binds to SP1-like sequences in epsilon- and gamma-globin gene promoters. This binding inhibits cell growth and causes apoptosis. Defects in this gene are a cause of maturity-onset diabetes of the young type 7 (MODY7). Three transcript variants encoding two different isoforms have been found for this gene. [provided by RefSeq, Apr 2010],

matters needing attention

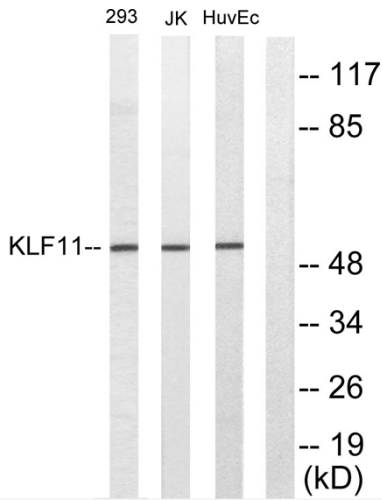
Avoid repeated freezing and thawing!

Usage suggestions

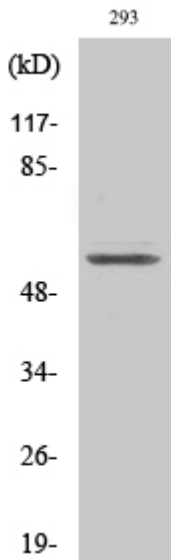
This product can be used in immunological reaction related experiments. For more information, please consult technical personnel.



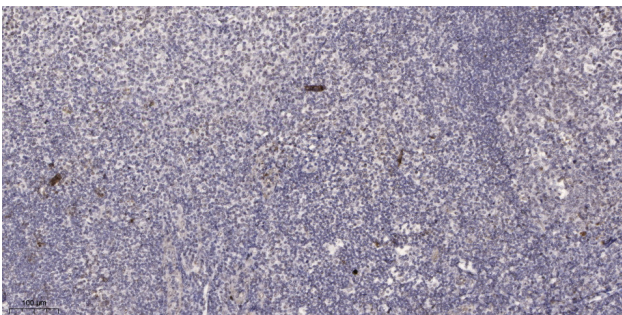
Products Images



Western Blot analysis of various cells using TIEG2 Polyclonal Antibody cells nucleus extracted by Minute TM Cytoplasmic and Nuclear Fractionation kit (SC-003, Inventbiotech, MN, USA).



Western blot analysis of lysates from 293, Jurkat, and HUVEC cells, using KLF11 Antibody. The lane on the right is blocked with the synthesized peptide.



Immunohistochemical analysis of paraffin-embedded human tonsil. 1, Antibody was diluted at 1:200(4° overnight). 2, Tris-EDTA, pH9.0 was used for antigen retrieval. 3, Secondary antibody was diluted at 1:200(room temperature, 45min).