



THAP4 Polyclonal Antibody

Catalog No	BYab-02113
Isotype	IgG
Reactivity	Human;Mouse;Rat;Monkey
Applications	WB;IHC;IF;ELISA
Gene Name	THAP4
Protein Name	THAP domain-containing protein 4
Immunogen	The antiserum was produced against synthesized peptide derived from human THAP4. AA range:341-390
Specificity	THAP4 Polyclonal Antibody detects endogenous levels of THAP4 protein.
Formulation	Liquid in PBS containing 50% glycerol, 0.5% BSA and 0.02% sodium azide.
Source	Polyclonal, Rabbit,IgG
Purification	The antibody was affinity-purified from rabbit antiserum by affinity-chromatography using epitope-specific immunogen.
Dilution	WB: 1/500 - 1/2000. IHC: 1/100 - 1/300. ELISA: 1/40000.. IF 1:50-200
Concentration	1 mg/ml
Purity	≥90%
Storage Stability	-20°C/1 year
Synonyms	THAP4; CGI-36; PP238; THAP domain-containing protein 4
Observed Band	63kD
Cell Pathway	Cytoplasm. Nucleus. Localizes mainly in the cytoplasm and partially in the nucleus. .
Tissue Specificity	Brain, Eye, Melanoma, Muscle, Ovarian carcinoma,
Function	PTM:Phosphorylated upon DNA damage, probably by ATM or ATR., similarity:Contains 1 THAP-type zinc finger.,
Background	PTM:Phosphorylated upon DNA damage, probably by ATM or ATR., similarity:Contains 1 THAP-type zinc finger.,
matters needing attention	Avoid repeated freezing and thawing!

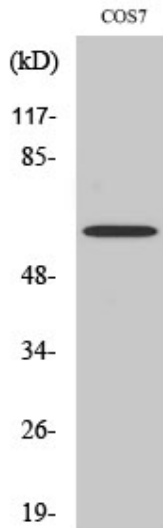
Nanjing BYabscience technology Co.,Ltd



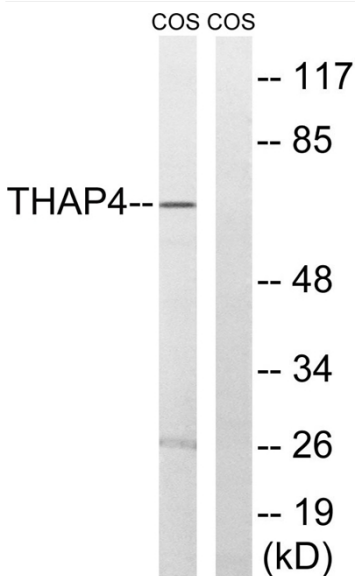
Usage suggestions

This product can be used in immunological reaction related experiments. For more information, please consult technical personnel.

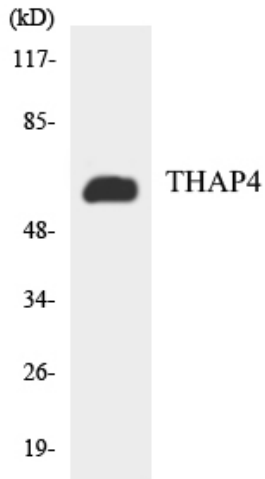
Products Images



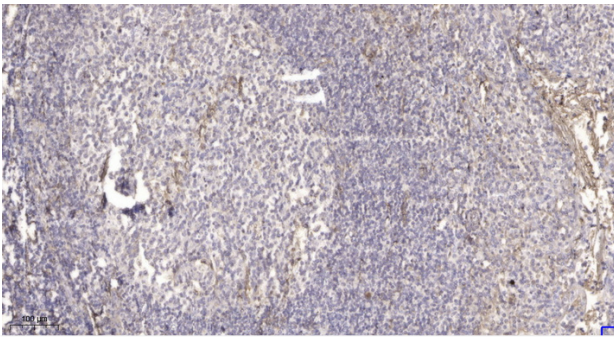
Western Blot analysis of various cells using THAP4 Polyclonal Antibody



Western blot analysis of lysates from COS7 cells, using THAP4 Antibody. The lane on the right is blocked with the synthesized peptide.



Western blot analysis of the lysates from HT-29 cells using THAP4 antibody.



Immunohistochemical analysis of paraffin-embedded human tonsil. 1, Antibody was diluted at 1:200(4° overnight). 2, Tris-EDTA,pH9.0 was used for antigen retrieval. 3,Secondary antibody was diluted at 1:200(room temperature, 45min).