



TEF-5 Polyclonal Antibody

Catalog No	BYab-02097
Isotype	IgG
Reactivity	Human;Mouse
Applications	WB;ELISA
Gene Name	TEAD3
Protein Name	Transcriptional enhancer factor TEF-5
Immunogen	The antiserum was produced against synthesized peptide derived from human TEAD3. AA range:211-260
Specificity	TEF-5 Polyclonal Antibody detects endogenous levels of TEF-5 protein.
Formulation	Liquid in PBS containing 50% glycerol, 0.5% BSA and 0.02% sodium azide.
Source	Polyclonal, Rabbit,IgG
Purification	The antibody was affinity-purified from rabbit antiserum by affinity-chromatography using epitope-specific immunogen.
Dilution	Western Blot: 1/500 - 1/2000. ELISA: 1/10000. Not yet tested in other applications.
Concentration	1 mg/ml
Purity	≥90%
Storage Stability	-20°C/1 year
Synonyms	TEAD3; TEAD5; TEF5; Transcriptional enhancer factor TEF-5; DTEF-1; TEA domain family member 3; TEAD-3
Observed Band	49kD
Cell Pathway	Nucleus.
Tissue Specificity	Preferentially expressed in the placenta.
Function	function: Binds to multiple functional elements of the human chorionic somatomammotropin-B gene enhancer., similarity: Contains 1 TEA DNA-binding domain., tissue specificity: Preferentially expressed in the placenta.,
Background	This gene product is a member of the transcriptional enhancer factor (TEF) family of transcription factors, which contain the TEA/ATTS DNA-binding domain. It is predominantly expressed in the placenta and is involved in the transactivation of the chorionic somatomammotropin-B gene enhancer. Translation of this protein is initiated at a non-AUG (AUA) start codon. [provided by RefSeq, Jul 2008],

Nanjing BYabscience technology Co.,Ltd



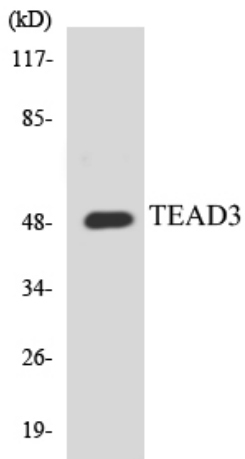
matters needing attention

Avoid repeated freezing and thawing!

Usage suggestions

This product can be used in immunological reaction related experiments. For more information, please consult technical personnel.

Products Images



Western blot analysis of the lysates from HUVEC cells using TEAD3 antibody.