



TEF-1 Polyclonal Antibody

Catalog No	BYab-02095
Isotype	IgG
Reactivity	Human;Mouse;Rat
Applications	WB;IHC;IF;ELISA
Gene Name	TEAD1
Protein Name	Transcriptional enhancer factor TEF-1
Immunogen	Synthesized peptide derived from TEF-1 . at AA range: 30-110
Specificity	TEF-1 Polyclonal Antibody detects endogenous levels of TEF-1 protein.
Formulation	Liquid in PBS containing 50% glycerol, 0.5% BSA and 0.02% sodium azide.
Source	Polyclonal, Rabbit,IgG
Purification	The antibody was affinity-purified from rabbit antiserum by affinity-chromatography using epitope-specific immunogen.
Dilution	WB: 1/500 - 1/2000. IHC: 1/100 - 1/300. ELISA: 1/40000.. IF 1:50-200
Concentration	1 mg/ml
Purity	≥90%
Storage Stability	-20°C/1 year
Synonyms	TEAD1; TCF13; TEF1; Transcriptional enhancer factor TEF-1; NTEF-1; Protein GT-IIC; TEA domain family member 1; TEAD-1; Transcription factor 13; TCF-13
Observed Band	50kD
Cell Pathway	Nucleus.
Tissue Specificity	Preferentially expressed in skeletal muscle. Lower levels in pancreas, placenta, and heart.
Function	disease:Defects in TEAD1 are the cause of Sveinsson chorioretinal atrophy (SCRA) [MIM:108985]; also known as atrophia areata (AA) or helicoidal peripapillary chorioretinal degeneration (HPCD). SCRA is characterized by symmetrical lesions radiating from the optic disk involving the retina and the choroid.,function:Binds specifically and cooperatively to the SPH and GT-IIC "enhansons" (5'-GTGGAATGT-3') and activates transcription in vivo in a cell-specific manner. The activation function appears to be mediated by a limiting cell-specific transcriptional intermediary factor (TIF). Involved in cardiac development. Binds to the M-CAT motif.,similarity:Contains 1 TEA DNA-binding domain.,tissue specificity:Preferentially expressed in skeletal muscle. Lower levels in pancreas, placenta, and heart.,

Nanjing BYabscience technology Co.,Ltd



Background

This gene encodes a ubiquitous transcriptional enhancer factor that is a member of the TEA/ATTS domain family. This protein directs the transactivation of a wide variety of genes and, in placental cells, also acts as a transcriptional repressor. Mutations in this gene cause Sveinsson's chorioretinal atrophy. Additional transcript variants have been described but their full-length natures have not been experimentally verified. [provided by RefSeq, May 2010],

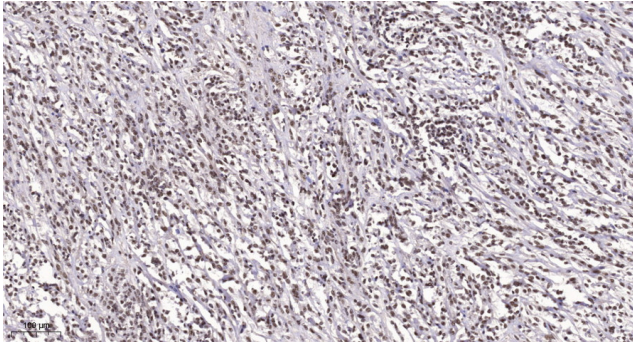
matters needing attention

Avoid repeated freezing and thawing!

Usage suggestions

This product can be used in immunological reaction related experiments. For more information, please consult technical personnel.

Products Images



Immunohistochemical analysis of paraffin-embedded human Small intestinal stromal tumor. 1, Tris-EDTA,pH9.0 was used for antigen retrieval. 2 Antibody was diluted at 1:200(4° overnight.3,Secondary antibody was diluted at 1:200(room temperature, 45min).