



# TCF-9 Polyclonal Antibody

<b>Catalog No</b>	BYab-02092
<b>Isotype</b>	IgG
<b>Reactivity</b>	Human;Rat;Mouse;
<b>Applications</b>	WB;ELISA
<b>Gene Name</b>	GCFC2
<b>Protein Name</b>	GC-rich sequence DNA-binding factor 2
<b>Immunogen</b>	The antiserum was produced against synthesized peptide derived from human GCF. AA range:141-190
<b>Specificity</b>	TCF-9 Polyclonal Antibody detects endogenous levels of TCF-9 protein.
<b>Formulation</b>	Liquid in PBS containing 50% glycerol, 0.5% BSA and 0.02% sodium azide.
<b>Source</b>	Polyclonal, Rabbit,IgG
<b>Purification</b>	The antibody was affinity-purified from rabbit antiserum by affinity-chromatography using epitope-specific immunogen.
<b>Dilution</b>	Western Blot: 1/500 - 1/2000. ELISA: 1/20000. Not yet tested in other applications.
<b>Concentration</b>	1 mg/ml
<b>Purity</b>	≥90%
<b>Storage Stability</b>	-20°C/1 year
<b>Synonyms</b>	GCFC2; C2orf3; GCF; TCF9; GC-rich sequence DNA-binding factor 2; GC-rich sequence DNA-binding factor; Transcription factor 9; TCF-9
<b>Observed Band</b>	80kD
<b>Cell Pathway</b>	Nucleus, nucleoplasm . Nucleus, nucleolus .
<b>Tissue Specificity</b>	Widely expressed in tissues and cell lines.
<b>Function</b>	function:Factor that represses transcription. It binds to the GC-rich sequences (5'-GCGGGGC-3') present in the epidermal growth factor receptor, beta-actin, and calcium-dependent protease promoters.,sequence caution:Contaminating sequence. The N-terminus matches the 2q37.3 region.,similarity:Belongs to the GCF family.,tissue specificity:Widely expressed in tissues and cell lines.,
<b>Background</b>	The first mRNA transcript isolated for this gene was part of an artificial chimera derived from two distinct gene transcripts and a primer used in the cloning process (see Genbank accession M29204). A positively charged amino terminus present only in the chimera was determined to bind GC-rich DNA, thus mistakenly

Nanjing BYabscience technology Co.,Ltd



thought to identify a transcription factor gene. [provided by RefSeq, Jul 2008],

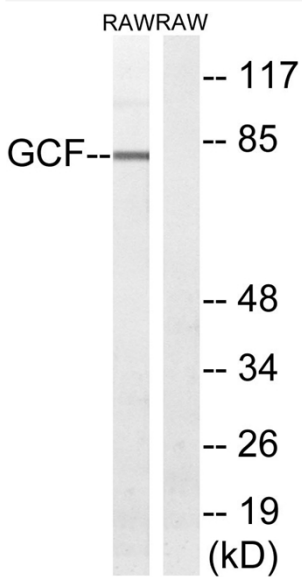
**matters needing attention**

Avoid repeated freezing and thawing!

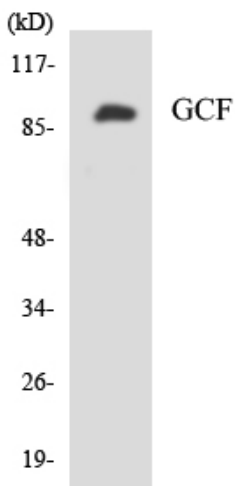
**Usage suggestions**

This product can be used in immunological reaction related experiments. For more information, please consult technical personnel.

## Products Images



Western blot analysis of lysates from RAW264.7 cells, using GCF Antibody. The lane on the right is blocked with the synthesized peptide.



Western blot analysis of the lysates from HeLa cells using GCF antibody.

Nanjing BYabscience technology Co.,Ltd