



TBX22 Polyclonal Antibody

Catalog No	BYab-02082
Isotype	IgG
Reactivity	Human;Rat;Mouse;
Applications	WB;IHC;IF;ELISA
Gene Name	TBX22
Protein Name	T-box transcription factor TBX22
Immunogen	The antiserum was produced against synthesized peptide derived from human TBX22. AA range:1-50
Specificity	TBX22 Polyclonal Antibody detects endogenous levels of TBX22 protein.
Formulation	Liquid in PBS containing 50% glycerol, 0.5% BSA and 0.02% sodium azide.
Source	Polyclonal, Rabbit,IgG
Purification	The antibody was affinity-purified from rabbit antiserum by affinity-chromatography using epitope-specific immunogen.
Dilution	WB: 1/500 - 1/2000. IHC: 1/100 - 1/300. ELISA: 1/20000.. IF 1:50-200
Concentration	1 mg/ml
Purity	≥90%
Storage Stability	-20°C/1 year
Synonyms	TBX22; TBOX22; T-box transcription factor TBX22; T-box protein 22
Observed Band	58kD
Cell Pathway	Nucleus .
Tissue Specificity	Seems to be expressed at a low level.
Function	disease:Defects in TBX22 are the cause of X-linked cleft palate with ankyloglossia (CPX) [MIM:303400].,function:Probable transcriptional regulator involved in developmental processes. This is major determinant crucial to palatogenesis.,similarity:Contains 1 T-box DNA-binding domain.,tissue specificity:Seems to be expressed at a low level.,
Background	T-box 22(TBX22) Homo sapiens This gene is a member of a phylogenetically conserved family of genes that share a common DNA-binding domain, the T-box. T-box genes encode transcription factors involved in the regulation of developmental processes. Mutations in this gene have been associated with the inherited X-linked disorder, Cleft palate with ankyloglossia, and it is believed to

Nanjing BYabscience technology Co.,Ltd



play a major role in human palatogenesis. Alternatively spliced transcript variants encoding different isoforms have been found for this gene. [provided by RefSeq, Jul 2008],

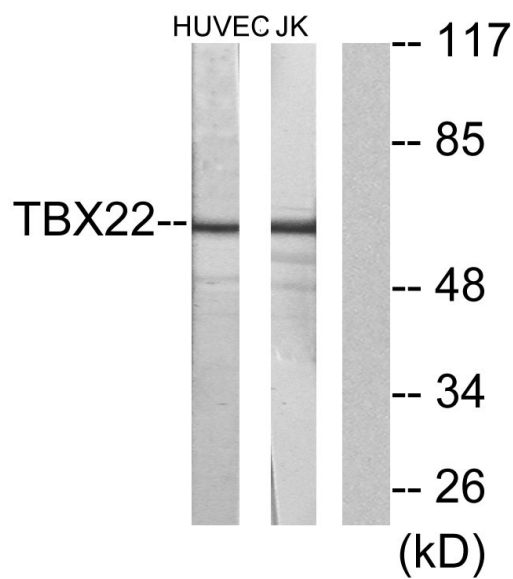
matters needing attention

Avoid repeated freezing and thawing!

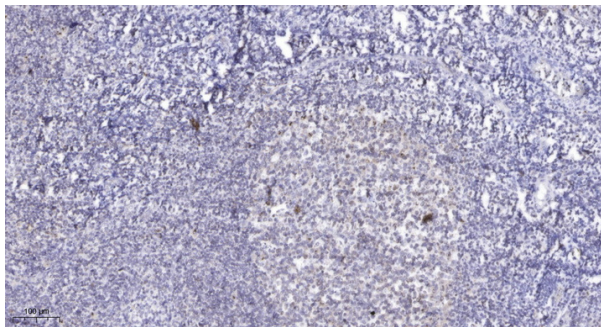
Usage suggestions

This product can be used in immunological reaction related experiments. For more information, please consult technical personnel.

Products Images



Western blot analysis of lysates from Jurkat and HUVEC cells, using TBX22 Antibody. The lane on the right is blocked with the synthesized peptide.



Immunohistochemical analysis of paraffin-embedded human tonsil. 1, Antibody was diluted at 1:200(4° overnight). 2, Tris-EDTA,pH9.0 was used for antigen retrieval. 3,Secondary antibody was diluted at 1:200(room temperature, 45min).