



# TBPL2 Polyclonal Antibody

<b>Catalog No</b>	BYab-02075
<b>Isotype</b>	IgG
<b>Reactivity</b>	Human;Rat;Mouse;
<b>Applications</b>	WB;IHC;IF;ELISA
<b>Gene Name</b>	TBPL2
<b>Protein Name</b>	TATA box-binding protein-like protein 2
<b>Immunogen</b>	The antiserum was produced against synthesized peptide derived from human TBPL2. AA range:81-130
<b>Specificity</b>	TBPL2 Polyclonal Antibody detects endogenous levels of TBPL2 protein.
<b>Formulation</b>	Liquid in PBS containing 50% glycerol, 0.5% BSA and 0.02% sodium azide.
<b>Source</b>	Polyclonal, Rabbit,IgG
<b>Purification</b>	The antibody was affinity-purified from rabbit antiserum by affinity-chromatography using epitope-specific immunogen.
<b>Dilution</b>	WB: 1/500 - 1/2000. IHC: 1/100 - 1/300. ELISA: 1/5000.. IF 1:50-200
<b>Concentration</b>	1 mg/ml
<b>Purity</b>	≥90%
<b>Storage Stability</b>	-20°C/1 year
<b>Synonyms</b>	TBPL2; TBP2; TRF3; TATA box-binding protein-like protein 2; TBP-like protein 2; TATA box-binding protein-related factor 3; TBP-related factor 3
<b>Observed Band</b>	41kD
<b>Cell Pathway</b>	Cytoplasm . Nucleus . Present in the cytoplasm during cytokinesis. .
<b>Tissue Specificity</b>	Ubiquitously expressed in all tissues examined with highest levels in heart, lung, ovary, spleen and testes.
<b>Function</b>	function:Transcription factor required in complex with TAF3 for the differentiation of myoblasts into myocytes. The complex replaces TFIIID at specific promoters at an early stage in the differentiation process.,similarity:Belongs to the TBP family.,subcellular location:Present in the cytoplasm during cytokinesis.,subunit:Interacts with TAF3.,tissue specificity:Ubiquitously expressed in all tissues examined with highest levels in heart, lung, ovary, spleen and testes.,
<b>Background</b>	function:Transcription factor required in complex with TAF3 for the differentiation of myoblasts into myocytes. The complex replaces TFIIID at specific promoters at

Nanjing BYabscience technology Co.,Ltd



an early stage in the differentiation process.,similarity:Belongs to the TBP family.,subcellular location:Present in the cytoplasm during cytokinesis.,subunit:Interacts with TAF3.,tissue specificity:Ubiquitously expressed in all tissues examined with highest levels in heart, lung, ovary, spleen and testes.,

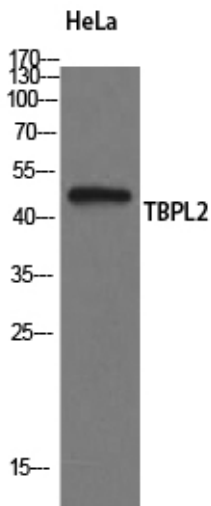
**matters needing attention**

Avoid repeated freezing and thawing!

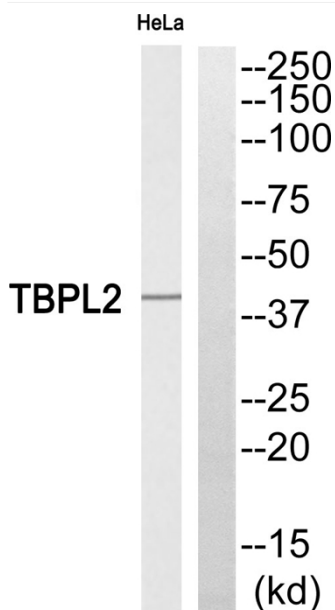
**Usage suggestions**

This product can be used in immunological reaction related experiments. For more information, please consult technical personnel.

**Products Images**

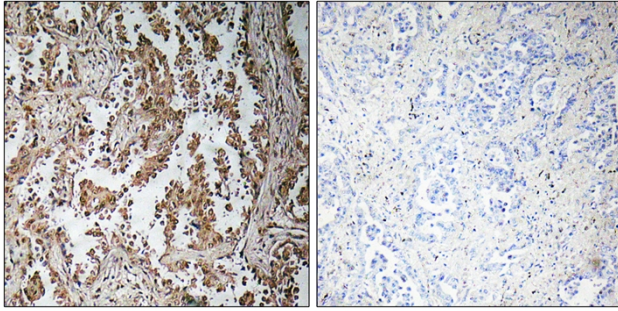


Western Blot analysis of HeLa cells using TBPL2 Polyclonal Antibody

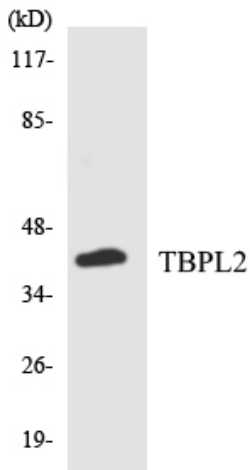


Western blot analysis of TBPL2 Antibody. The lane on the right is blocked with the TBPL2 peptide.

**Nanjing BYabscience technology Co.,Ltd**



Immunohistochemistry analysis of paraffin-embedded human lung carcinoma, using TBPL2 Antibody. The lane on the right is blocked with the TBPL2 peptide.



Western blot analysis of the lysates from COLO205 cells using TBPL2 antibody.