



# TBL2 Polyclonal Antibody

<b>Catalog No</b>	BYab-02074
<b>Isotype</b>	IgG
<b>Reactivity</b>	Human;Rat;Mouse;
<b>Applications</b>	WB;IHC;IF;ELISA
<b>Gene Name</b>	TBL2
<b>Protein Name</b>	Transducin beta-like protein 2
<b>Immunogen</b>	The antiserum was produced against synthesized peptide derived from human TBL2. AA range:381-430
<b>Specificity</b>	TBL2 Polyclonal Antibody detects endogenous levels of TBL2 protein.
<b>Formulation</b>	Liquid in PBS containing 50% glycerol, 0.5% BSA and 0.02% sodium azide.
<b>Source</b>	Polyclonal, Rabbit,IgG
<b>Purification</b>	The antibody was affinity-purified from rabbit antiserum by affinity-chromatography using epitope-specific immunogen.
<b>Dilution</b>	WB: 1/500 - 1/2000. IHC: 1/100 - 1/300. ELISA: 1/5000.. IF 1:50-200
<b>Concentration</b>	1 mg/ml
<b>Purity</b>	≥90%
<b>Storage Stability</b>	-20°C/1 year
<b>Synonyms</b>	TBL2; WBSCR13; Transducin beta-like protein 2; WS beta-transducin repeats protein; WS-betaTRP; Williams-Beuren syndrome chromosomal region 13 protein
<b>Observed Band</b>	50kD
<b>Cell Pathway</b>	endoplasmic reticulum,integral component of endoplasmic reticulum membrane,
<b>Tissue Specificity</b>	Kidney,Testis,Whole embryo,
<b>Function</b>	disease:Haploinsufficiency of TBL2 may be the cause of certain cardiovascular and musculo-skeletal abnormalities observed in Williams-Beuren syndrome (WBS) [MIM:194050]. WBS is a rare developmental disorder. It is a contiguous gene deletion syndrome involving genes from chromosome band 7q11.23.,PTM:Phosphorylated upon DNA damage, probably by ATM or ATR.,similarity:Contains 7 WD repeats.,
<b>Background</b>	This gene encodes a member of the beta-transducin protein family. Most proteins of the beta-transducin family are involved in regulatory functions. This protein is possibly involved in some intracellular signaling pathway. This gene is deleted in Williams-Beuren syndrome, a developmental disorder caused by

**Nanjing BYabscience technology Co.,Ltd**



deletion of multiple genes at 7q11.23. [provided by RefSeq, Jul 2008],

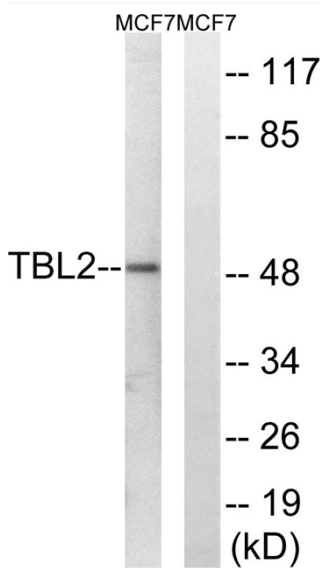
**matters needing attention**

Avoid repeated freezing and thawing!

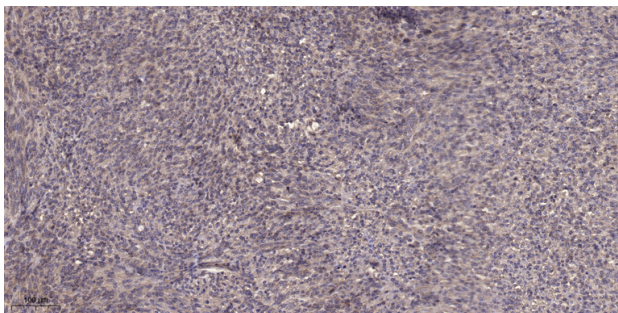
**Usage suggestions**

This product can be used in immunological reaction related experiments. For more information, please consult technical personnel.

## Products Images



Western blot analysis of lysates from MCF-7 cells, using TBL2 Antibody. The lane on the right is blocked with the synthesized peptide.



Immunohistochemical analysis of paraffin-embedded human Colon cancer. 1, Antibody was diluted at 1:200(4° overnight). 2, Tris-EDTA, pH9.0 was used for antigen retrieval. 3, Secondary antibody was diluted at 1:200(room temperature, 45min).