



SYT Polyclonal Antibody

Catalog No	BYab-02064
Isotype	IgG
Reactivity	Human;Mouse;Rat
Applications	WB;IHC;IF;ELISA
Gene Name	SS18
Protein Name	Protein SSXT
Immunogen	The antiserum was produced against synthesized peptide derived from human SSXT. AA range:1-50
Specificity	SYT Polyclonal Antibody detects endogenous levels of SYT protein.
Formulation	Liquid in PBS containing 50% glycerol, 0.5% BSA and 0.02% sodium azide.
Source	Polyclonal, Rabbit,IgG
Purification	The antibody was affinity-purified from rabbit antiserum by affinity-chromatography using epitope-specific immunogen.
Dilution	WB: 1/500 - 1/2000. IHC: 1/100 - 1/300. ELISA: 1/20000.. IF 1:50-200
Concentration	1 mg/ml
Purity	≥90%
Storage Stability	-20°C/1 year
Synonyms	SS18; SSXT; SYT; Protein SSXT; Protein SYT; Synovial sarcoma translocated to X chromosome protein
Observed Band	45kD
Cell Pathway	Nucleus .
Tissue Specificity	Fairly ubiquitously expressed. Expressed in synovial sarcomas and in other human cell lines. The fusion genes SSXT-SSX1 and SSXT-SSX2 are expressed only in synovial sarcomas.
Function	disease:A chromosomal aberration involving SS18 may be a cause of synovial sarcoma. Translocation t(X;18)(p11.2;q11.2). The translocation is specifically found in more than 80% of synovial sarcoma. The fusion products SSXT-SSX1 or SSXT-SSX2 are probably responsible for transforming activity. Heterogeneity in the position of the breakpoint can occur (low frequency).,similarity:Belongs to the SS18 family.,tissue specificity:Fairly ubiquitously expressed. Expressed in synovial sarcomas and in other human cell lines. The fusion genes SSXT-SSX1 and SSXT-SSX2 are expressed only in synovial sarcomas.,

Nanjing BYabscience technology Co.,Ltd



Background

disease:A chromosomal aberration involving SS18 may be a cause of synovial sarcoma. Translocation t(X;18)(p11.2;q11.2). The translocation is specifically found in more than 80% of synovial sarcoma. The fusion products SSXT-SSX1 or SSXT-SSX2 are probably responsible for transforming activity. Heterogeneity in the position of the breakpoint can occur (low frequency).,similarity:Belongs to the SS18 family.,tissue specificity:Fairly ubiquitously expressed. Expressed in synovial sarcomas and in other human cell lines. The fusion genes SSXT-SSX1 and SSXT-SSX2 are expressed only in synovial sarcomas.,

matters needing attention

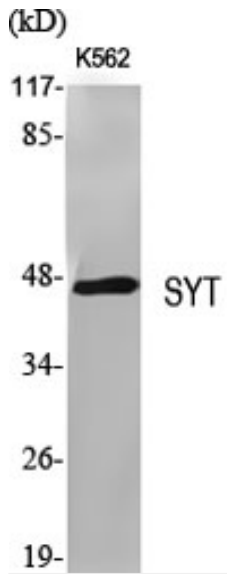
Avoid repeated freezing and thawing!

Usage suggestions

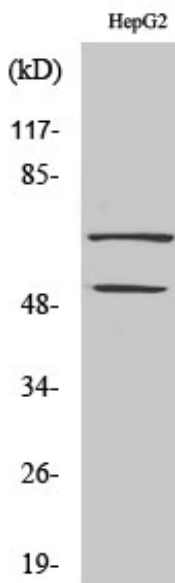
This product can be used in immunological reaction related experiments. For more information, please consult technical personnel.



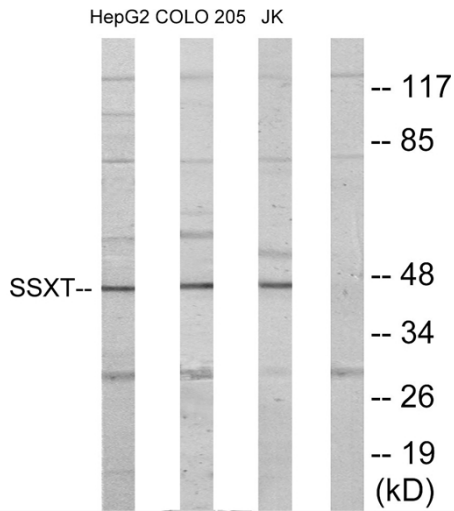
Products Images



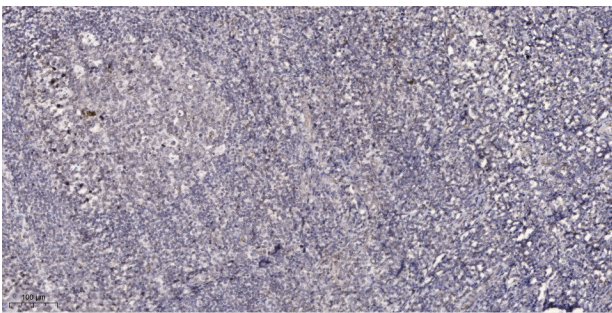
Western Blot analysis of various cells using SYT Polyclonal Antibody



Western Blot analysis of COLO205 cells using SYT Polyclonal Antibody



Western blot analysis of lysates from HepG2, Jurkat, and COLO205 cells, using SSXT Antibody. The lane on the right is blocked with the synthesized peptide.



Immunohistochemical analysis of paraffin-embedded human tonsil. 1, Antibody was diluted at 1:200(4° overnight). 2, Tris-EDTA,pH9.0 was used for antigen retrieval. 3,Secondary antibody was diluted at 1:200(room temperature, 45min).