



# SWAP Polyclonal Antibody

<b>Catalog No</b>	BYab-02063
<b>Isotype</b>	IgG
<b>Reactivity</b>	Human;Rat;Mouse;
<b>Applications</b>	WB;IHC
<b>Gene Name</b>	SFSWAP
<b>Protein Name</b>	Splicing factor suppressor of white-apricot homolog
<b>Immunogen</b>	The antiserum was produced against synthesized peptide derived from human SFRS8. AA range:201-250
<b>Specificity</b>	SWAP Polyclonal Antibody detects endogenous levels of SWAP protein.
<b>Formulation</b>	Liquid in PBS containing 50% glycerol, 0.5% BSA and 0.02% sodium azide.
<b>Source</b>	Polyclonal, Rabbit,IgG
<b>Purification</b>	The antibody was affinity-purified from rabbit antiserum by affinity-chromatography using epitope-specific immunogen.
<b>Dilution</b>	WB 1:500-2000;IHC-p 1:50-300
<b>Concentration</b>	1 mg/ml
<b>Purity</b>	≥90%
<b>Storage Stability</b>	-20°C/1 year
<b>Synonyms</b>	SFSWAP; SFRS8; SWAP; Splicing factor; suppressor of white-apricot homolog; Splicing factor, arginine/serine-rich 8; Suppressor of white apricot protein homolog
<b>Observed Band</b>	105kD
<b>Cell Pathway</b>	Nucleus .
<b>Tissue Specificity</b>	Brain,Epithelium,Eye,Placenta,Skin,
<b>Function</b>	function:May function as an alternative splicing regulator. Regulate its own expression at the level of RNA processing. Also regulates the splicing of fibronectin and CD45 genes. May act, at least in part, by interaction with other R/S-containing splicing factors.,PTM:Phosphorylated upon DNA damage, probably by ATM or ATR.,similarity:Contains 2 SURP motif repeats.,
<b>Background</b>	This gene encodes a human homolog of Drosophila splicing regulatory protein. This gene autoregulates its expression by control of splicing of its first two introns. In addition, it also regulates the splicing of fibronectin and CD45 genes. Two

Nanjing BYabscience technology Co.,Ltd



transcript variants encoding different isoforms have been identified. [provided by RefSeq, May 2012],

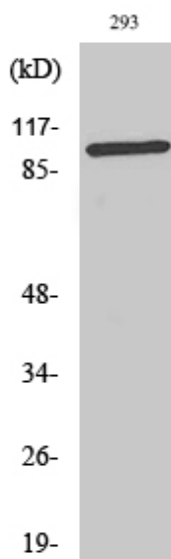
**matters needing attention**

Avoid repeated freezing and thawing!

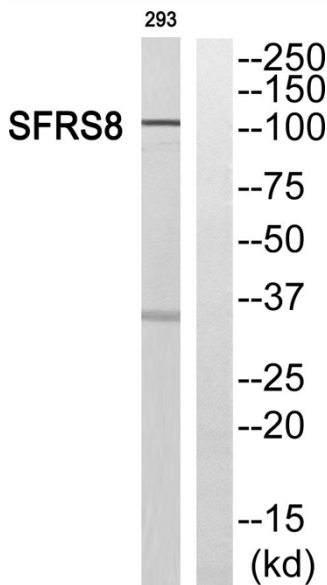
**Usage suggestions**

This product can be used in immunological reaction related experiments. For more information, please consult technical personnel.

**Products Images**

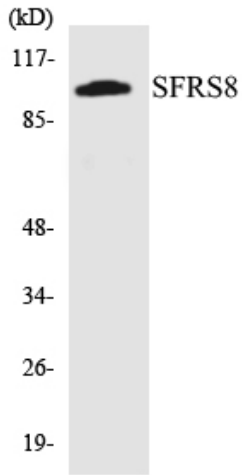


Western Blot analysis of various cells using SWAP Polyclonal Antibody cells nucleus extracted by Minute TM Cytoplasmic and Nuclear Fractionation kit (SC-003, Inventbiotech, MN, USA).

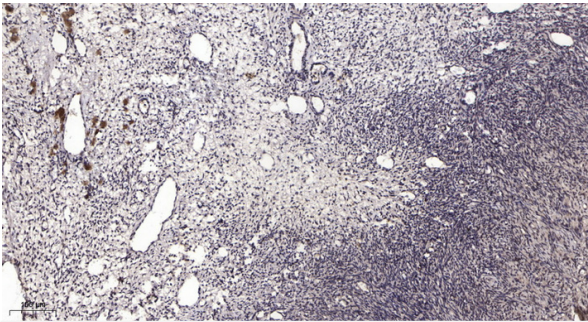


Western blot analysis of SFRS8 Antibody. The lane on the right is blocked with the SFRS8 peptide.

**Nanjing BYabscience technology Co.,Ltd**



Western blot analysis of the lysates from 293 cells using SFRS8 antibody.



Immunohistochemical analysis of paraffin-embedded human oophoroma. 1, Antibody was diluted at 1:200(4° overnight). 2, Tris-EDTA, pH9.0 was used for antigen retrieval. 3, Secondary antibody was diluted at 1:200(room temperature, 45min).