



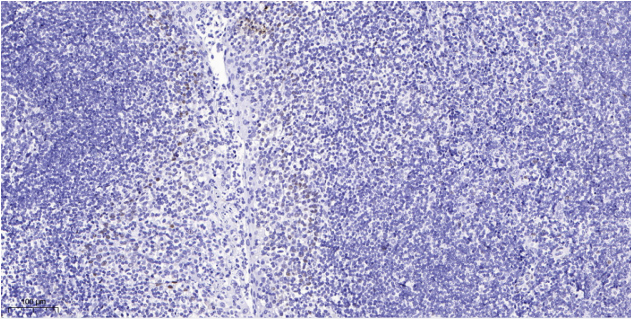
SUHW4 Polyclonal Antibody

Catalog No	BYab-02061
Isotype	IgG
Reactivity	Human;Rat;Mouse;
Applications	IHC;IF;ELISA
Gene Name	ZNF280D
Protein Name	Zinc finger protein 280D
Immunogen	Synthesized peptide derived from the Internal region of human SUHW4.
Specificity	SUHW4 Polyclonal Antibody detects endogenous levels of SUHW4 protein.
Formulation	Liquid in PBS containing 50% glycerol, 0.5% BSA and 0.02% sodium azide.
Source	Polyclonal, Rabbit,IgG
Purification	The antibody was affinity-purified from rabbit antiserum by affinity-chromatography using epitope-specific immunogen.
Dilution	IHC: 1/100 - 1/300. ELISA: 1/10000.. IF 1:50-200
Concentration	1 mg/ml
Purity	≥90%
Storage Stability	-20°C/1 year
Synonyms	ZNF280D; KIAA1584; SUHW4; ZNF634; Zinc finger protein 280D; Suppressor of hairy wing homolog 4; Zinc finger protein 634
Observed Band	
Cell Pathway	Nucleus .
Tissue Specificity	Brain,Colon,Colon endothelium,Liver,Skin,Uterine endothelium,Uterus,
Function	function:May function as a transcription factor.,similarity:Contains 5 C2H2-type zinc fingers.,
Background	function:May function as a transcription factor.,similarity:Contains 5 C2H2-type zinc fingers.,
matters needing attention	Avoid repeated freezing and thawing!
Usage suggestions	This product can be used in immunological reaction related experiments. For more information, please consult technical personnel.

Nanjing BYabscience technology Co.,Ltd



Products Images



Immunohistochemical analysis of paraffin-embedded human tonsil. 1, Antibody was diluted at 1:200(4° overnight). 2, Tris-EDTA,pH9.0 was used for antigen retrieval. 3,Secondary antibody was diluted at 1:200(room temperature, 45min).