



SUHW3 Polyclonal Antibody

Catalog No	BYab-02060
Isotype	IgG
Reactivity	Human;Rat;Mouse;
Applications	WB;IHC;IF;ELISA
Gene Name	ZNF280C
Protein Name	Zinc finger protein 280C
Immunogen	The antiserum was produced against synthesized peptide derived from human ZNF280C. AA range:251-300
Specificity	SUHW3 Polyclonal Antibody detects endogenous levels of SUHW3 protein.
Formulation	Liquid in PBS containing 50% glycerol, 0.5% BSA and 0.02% sodium azide.
Source	Polyclonal, Rabbit,IgG
Purification	The antibody was affinity-purified from rabbit antiserum by affinity-chromatography using epitope-specific immunogen.
Dilution	WB: 1/500 - 1/2000. IHC: 1/100 - 1/300. ELISA: 1/40000.. IF 1:50-200
Concentration	1 mg/ml
Purity	≥90%
Storage Stability	-20°C/1 year
Synonyms	ZNF280C; SUHW3; ZNF633; Zinc finger protein 280C; Suppressor of hairy wing homolog 3; Zinc finger protein 633
Observed Band	85kD
Cell Pathway	Nucleus .
Tissue Specificity	Colon,Testis,
Function	function:May function as a transcription factor.,PTM:Phosphorylated upon DNA damage, probably by ATM or ATR.,sequence caution:Contaminating sequence. Potential poly-A sequence.,similarity:Contains 5 C2H2-type zinc fingers.,
Background	This gene encodes a member of the zinc finger domain-containing protein family. This family member contains multiple Cys2-His2(C2H2)-type zinc finger domains, the most common type of zinc finger domain that self-folds to form a beta-beta-alpha structure that binds a zinc ion. [provided by RefSeq, Aug 2011],

Nanjing BYabscience technology Co.,Ltd



matters needing attention

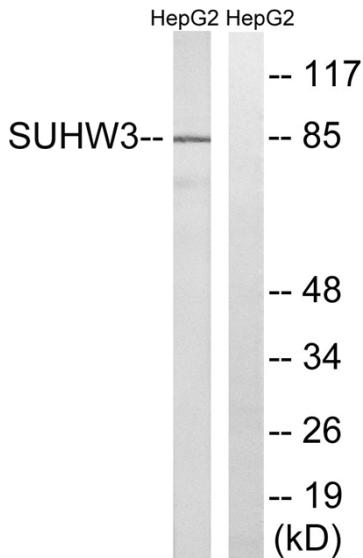
Avoid repeated freezing and thawing!

Usage suggestions

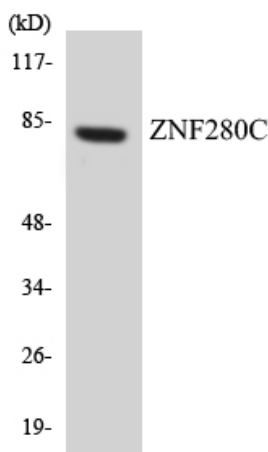
This product can be used in immunological reaction related experiments. For more information, please consult technical personnel.



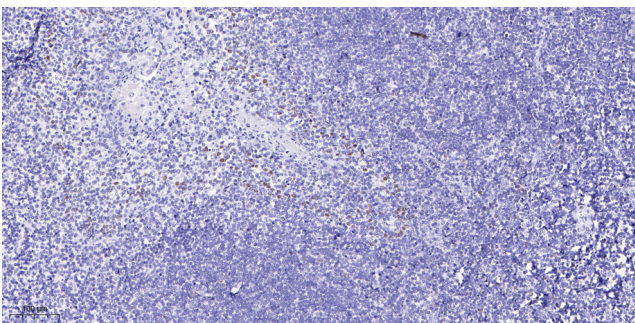
Products Images



Western blot analysis of lysates from HepG2 cells, using ZNF280C Antibody. The lane on the right is blocked with the synthesized peptide.



Western blot analysis of the lysates from HeLa cells using ZNF280C antibody.



Immunohistochemical analysis of paraffin-embedded human tonsil. 1, Antibody was diluted at 1:200(4° overnight). 2, Tris-EDTA,pH9.0 was used for antigen retrieval. 3,Secondary antibody was diluted at 1:200(room temperature, 45min).