



SRp75 Polyclonal Antibody

Catalog No	BYab-02047
Isotype	IgG
Reactivity	Human;Mouse
Applications	WB;IHC;IF;ELISA
Gene Name	SRSF4
Protein Name	Serine/arginine-rich splicing factor 4
Immunogen	The antiserum was produced against synthesized peptide derived from human SFRS4. AA range:111-160
Specificity	SRp75 Polyclonal Antibody detects endogenous levels of SRp75 protein.
Formulation	Liquid in PBS containing 50% glycerol, 0.5% BSA and 0.02% sodium azide.
Source	Polyclonal, Rabbit,IgG
Purification	The antibody was affinity-purified from rabbit antiserum by affinity-chromatography using epitope-specific immunogen.
Dilution	WB: 1/500 - 1/2000. IHC: 1/100 - 1/300. ELISA: 1/20000.. IF 1:50-200
Concentration	1 mg/ml
Purity	≥90%
Storage Stability	-20°C/1 year
Synonyms	SRSF4; SFRS4; SRP75; Serine/arginine-rich splicing factor 4; Pre-mRNA-splicing factor SRP75; SRP001LB; Splicing factor; arginine/serine-rich 4
Observed Band	57kD
Cell Pathway	Nucleus speckle .
Tissue Specificity	Aorta endothelial cell,Cerebrum,Epithelium,Lymph,
Function	function:A probable role in alternative splice site selection during pre-mRNA splicing.,PTM:Extensively phosphorylated on serine residues in the RS domain.,similarity:Belongs to the splicing factor SR family.,similarity:Contains 2 RRM (RNA recognition motif) domains.,subunit:Found in a pre-mRNA splicing complex with SFRS4, SFRS5, SNRNP70, SNRPA1, SRRM1 and SRRM2. Interacts with PNN.,
Background	This gene encodes a member of the arginine/serine-rich splicing factor family. The encoded protein likely functions in mRNA processing. [provided by RefSeq,

Nanjing BYabscience technology Co.,Ltd



Feb 2009],

matters needing attention

Avoid repeated freezing and thawing!

Usage suggestions

This product can be used in immunological reaction related experiments. For more information, please consult technical personnel.

Nanjing BYabscience technology Co.,Ltd

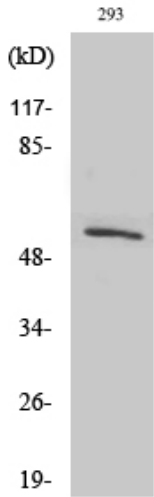
网址: www.njbybio.com

官方热线: 025-5229-8998

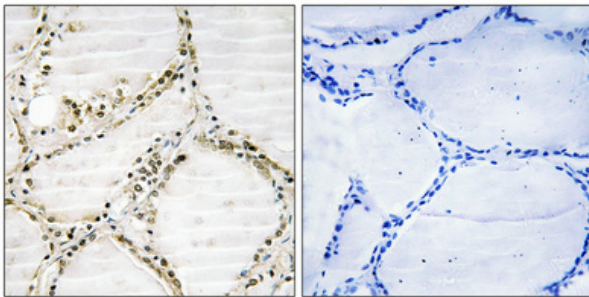
监督电话: 15950492658



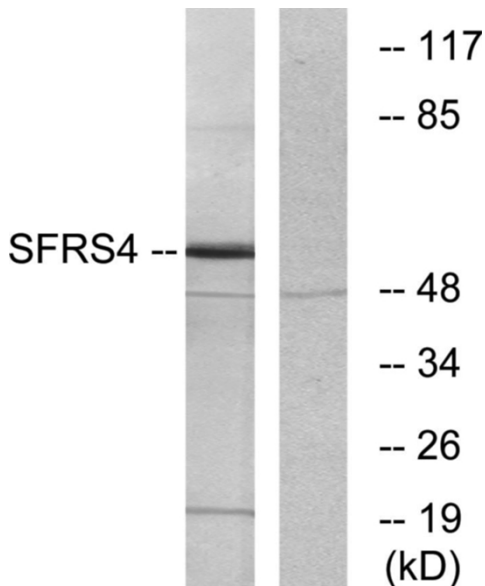
Products Images



Western Blot analysis of various cells using SRp75 Polyclonal Antibody diluted at 1:1000 cells nucleus extracted by Minute TM Cytoplasmic and Nuclear Fractionation kit (SC-003, Inventbiotech, MN, USA).



Immunohistochemical analysis of paraffin-embedded Human thyroid gland. Antibody was diluted at 1:100 (4° overnight). High-pressure and temperature Tris-EDTA, pH8.0 was used for antigen retrieval. Negative control (right) obtained from antibody was pre-absorbed by immunogen peptide.



Western blot analysis of lysates from LOVO cells, using SFRS4 Antibody. The lane on the right is blocked with the synthesized peptide.