



SRp55 Polyclonal Antibody

Catalog No	BYab-02046
Isotype	IgG
Reactivity	Human;Mouse;Rat
Applications	IHC;IF;ELISA
Gene Name	SRSF6
Protein Name	Serine/arginine-rich splicing factor 6
Immunogen	Synthesized peptide derived from SRp55 . at AA range: 30-110
Specificity	SRp55 Polyclonal Antibody detects endogenous levels of SRp55 protein.
Formulation	Liquid in PBS containing 50% glycerol, 0.5% BSA and 0.02% sodium azide.
Source	Polyclonal, Rabbit,IgG
Purification	The antibody was affinity-purified from rabbit antiserum by affinity-chromatography using epitope-specific immunogen.
Dilution	IHC: 1/100 - 1/300. ELISA: 1/20000.. IF 1:50-200
Concentration	1 mg/ml
Purity	≥90%
Storage Stability	-20°C/1 year
Synonyms	SRSF6; SFRS6; SRP55; Serine/arginine-rich splicing factor 6; Pre-mRNA-splicing factor SRP55; Splicing factor; arginine/serine-rich 6
Observed Band	
Cell Pathway	Nucleus . Nucleus speckle .
Tissue Specificity	Brain,Colon,Epithelium,Placenta,
Function	function:Plays a role in constitutive splicing and can modulate the selection of alternative splice sites.,PTM:Extensively phosphorylated on serine residues in the RS domain.,similarity:Belongs to the splicing factor SR family.,similarity:Contains 2 RRM (RNA recognition motif) domains.,subunit:Binds SFRS12.,
Background	The protein encoded by this gene is involved in mRNA splicing and may play a role in the determination of alternative splicing. The encoded nuclear protein belongs to the splicing factor SR family and has been shown to bind with and modulate another member of the family, SFRS12. Alternative splicing results in multiple transcript variants. In addition, two pseudogenes, one on chromosome 17 and the other on the X chromosome, have been found for this gene.[provided by

Nanjing BYabscience technology Co.,Ltd



RefSeq, Sep 2010],

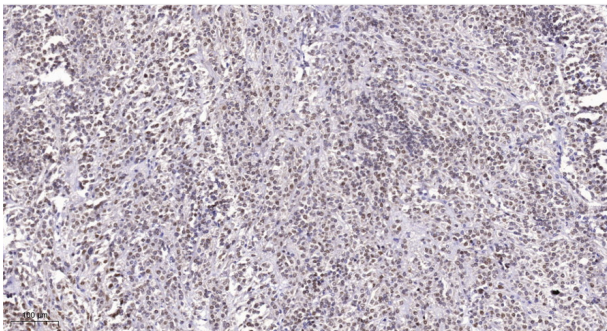
matters needing attention

Avoid repeated freezing and thawing!

Usage suggestions

This product can be used in immunological reaction related experiments. For more information, please consult technical personnel.

Products Images



Immunohistochemical analysis of paraffin-embedded human Small intestinal stromal tumor. 1, Tris-EDTA,pH9.0 was used for antigen retrieval. 2 Antibody was diluted at 1:200(4° overnight.3,Secondary antibody was diluted at 1:200(room temperature, 45min).