



SRp40 Polyclonal Antibody

Catalog No	BYab-02044
Isotype	IgG
Reactivity	Human;Mouse;Rat
Applications	IHC;IF;ELISA
Gene Name	SRSF5
Protein Name	Serine/arginine-rich splicing factor 5
Immunogen	The antiserum was produced against synthesized peptide derived from human SFRS5. AA range:71-120
Specificity	SRp40 Polyclonal Antibody detects endogenous levels of SRp40 protein.
Formulation	Liquid in PBS containing 50% glycerol, 0.5% BSA and 0.02% sodium azide.
Source	Polyclonal, Rabbit,IgG
Purification	The antibody was affinity-purified from rabbit antiserum by affinity-chromatography using epitope-specific immunogen.
Dilution	Immunohistochemistry: 1/100 - 1/300. Immunofluorescence: 1/200 - 1/1000. ELISA: 1/20000. Not yet tested in other applications.
Concentration	1 mg/ml
Purity	≥90%
Storage Stability	-20°C/1 year
Synonyms	SRSF5; HRS; SFRS5; SRP40; Serine/arginine-rich splicing factor 5; Delayed-early protein HRS; Pre-mRNA-splicing factor SRP40; Splicing factor; arginine/serine-rich 5
Observed Band	
Cell Pathway	Nucleus.
Tissue Specificity	Brain,Colon,Epithelium,Fetal brain,Human endometrium carcin
Function	function:Plays a role in constitutive splicing and can modulate the selection of alternative splice sites.,PTM:Extensively phosphorylated on serine residues in the RS domain.,similarity:Belongs to the splicing factor SR family.,similarity:Contains 2 RRM (RNA recognition motif) domains.,subunit:Found in a pre-mRNA splicing complex with SFRS4, SFRS5, SNRNP70, SNRPA1, SRRM1 and SRRM2.,
Background	The protein encoded by this gene is a member of the serine/arginine (SR)-rich family of pre-mRNA splicing factors, which constitute part of the spliceosome. Each of these factors contains an RNA recognition motif (RRM) for binding RNA

Nanjing BYabscience technology Co.,Ltd



and an RS domain for binding other proteins. The RS domain is rich in serine and arginine residues and facilitates interaction between different SR splicing factors. In addition to being critical for mRNA splicing, the SR proteins have also been shown to be involved in mRNA export from the nucleus and in translation. Alternative splicing results in multiple transcript variants. [provided by RefSeq, Feb 2016],

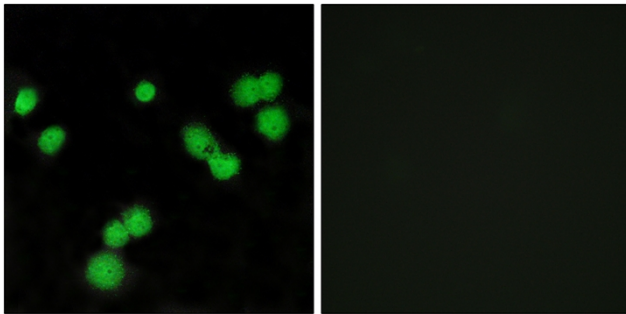
matters needing attention

Avoid repeated freezing and thawing!

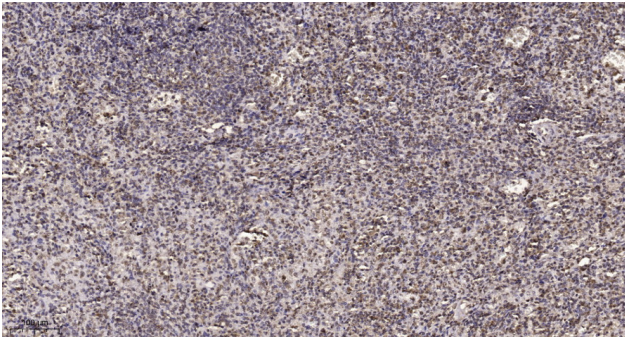
Usage suggestions

This product can be used in immunological reaction related experiments. For more information, please consult technical personnel.

Products Images



Immunofluorescence analysis of MCF7 cells, using SFRS5 Antibody. The picture on the right is blocked with the synthesized peptide.



Immunohistochemical analysis of paraffin-embedded human spleen. 1, Tris-EDTA, pH9.0 was used for antigen retrieval. 2 Antibody was diluted at 1:200(4° overnight). 3, Secondary antibody was diluted at 1:200(room temperature, 45min).