



SRp20 Polyclonal Antibody

Catalog No	BYab-02043
Isotype	IgG
Reactivity	Human;Mouse
Applications	WB;IHC;IF;ELISA
Gene Name	SRSF3
Protein Name	Serine/arginine-rich splicing factor 3
Immunogen	The antiserum was produced against synthesized peptide derived from human SFRS3. AA range:111-160
Specificity	SRp20 Polyclonal Antibody detects endogenous levels of SRp20 protein.
Formulation	Liquid in PBS containing 50% glycerol, 0.5% BSA and 0.02% sodium azide.
Source	Polyclonal, Rabbit,IgG
Purification	The antibody was affinity-purified from rabbit antiserum by affinity-chromatography using epitope-specific immunogen.
Dilution	Western Blot: 1/500 - 1/2000. Immunohistochemistry: 1/100 - 1/300. Immunofluorescence: 1/200 - 1/1000. ELISA: 1/5000. Not yet tested in other applications.
Concentration	1 mg/ml
Purity	≥90%
Storage Stability	-20°C/1 year
Synonyms	SRSF3; SFRS3; SRP20; Serine/arginine-rich splicing factor 3; Pre-mRNA-splicing factor SRP20; Splicing factor; arginine/serine-rich 3
Observed Band	25kD
Cell Pathway	Nucleus . Nucleus speckle . Cytoplasm . Recruited to nuclear speckles following interaction with YTHDC1. .
Tissue Specificity	Brain,Epithelium,Placenta,Tongue,
Function	function:May be involved in RNA processing in relation with cellular proliferation and/or maturation.,PTM:Extensively phosphorylated on serine residues in the RS domain.,similarity:Belongs to the splicing factor SR family.,similarity:Contains 1 RRM (RNA recognition motif) domain.,subunit:Interacts with CPSF6, RBMY1A1 and SFRS12.,
Background	The protein encoded by this gene is a member of the serine/arginine (SR)-rich family of pre-mRNA splicing factors, which constitute part of the spliceosome. Each of these factors contains an RNA recognition motif (RRM) for binding RNA

Nanjing BYabscience technology Co.,Ltd



and an RS domain for binding other proteins. The RS domain is rich in serine and arginine residues and facilitates interaction between different SR splicing factors. In addition to being critical for mRNA splicing, the SR proteins have also been shown to be involved in mRNA export from the nucleus and in translation. Two transcript variants, one protein-coding and the other non-coding, have been found for this gene. [provided by RefSeq, Sep 2010],

matters needing attention

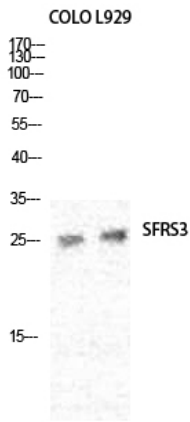
Avoid repeated freezing and thawing!

Usage suggestions

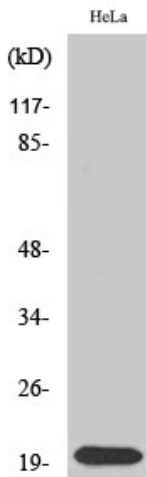
This product can be used in immunological reaction related experiments. For more information, please consult technical personnel.



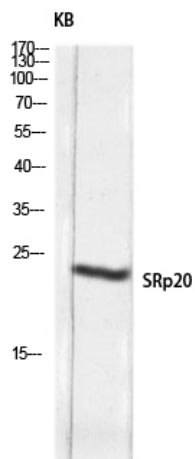
Products Images



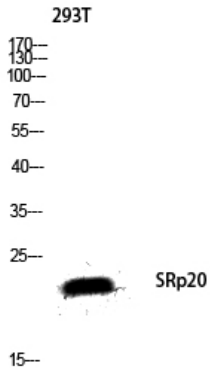
Western Blot analysis of various cells using SRp20 Polyclonal Antibody diluted at 1:2000 cells nucleus extracted by Minute TM Cytoplasmic and Nuclear Fractionation kit (SC-003, Inventbiotech, MN, USA).



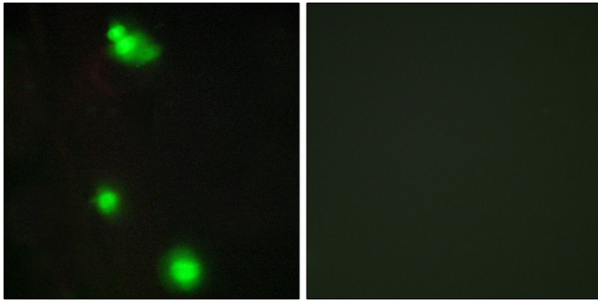
Western Blot analysis of Jurkat cells using SRp20 Polyclonal Antibody diluted at 1:2000 cells nucleus extracted by Minute TM Cytoplasmic and Nuclear Fractionation kit (SC-003, Inventbiotech, MN, USA).



Western blot analysis of KB lysis using SRp20 antibody. Antibody was diluted at 1:2000 cells nucleus extracted by Minute TM Cytoplasmic and Nuclear Fractionation kit (SC-003, Inventbiotech, MN, USA).



Western blot analysis of 293T lysis using SRp20 antibody. Antibody was diluted at 1:2000 cells nucleus extracted by Minute TM Cytoplasmic and Nuclear Fractionation kit (SC-003, Inventbiotech, MN, USA).



Immunofluorescence analysis of MCF7 cells, using SFRS3 Antibody. The picture on the right is blocked with the synthesized peptide.