



SPT3 Polyclonal Antibody

| | |
|---------------------------|--|
| Catalog No | BYab-02039 |
| Isotype | IgG |
| Reactivity | Human;Rat;Mouse; |
| Applications | WB;IHC;IF;ELISA |
| Gene Name | SUPT3H |
| Protein Name | Transcription initiation protein SPT3 homolog |
| Immunogen | The antiserum was produced against synthesized peptide derived from human SUPT3H. AA range:171-220 |
| Specificity | SPT3 Polyclonal Antibody detects endogenous levels of SPT3 protein. |
| Formulation | Liquid in PBS containing 50% glycerol, 0.5% BSA and 0.02% sodium azide. |
| Source | Polyclonal, Rabbit,IgG |
| Purification | The antibody was affinity-purified from rabbit antiserum by affinity-chromatography using epitope-specific immunogen. |
| Dilution | WB: 1/500 - 1/2000. IHC: 1/100 - 1/300. ELISA: 1/20000.. IF 1:50-200 |
| Concentration | 1 mg/ml |
| Purity | ≥90% |
| Storage Stability | -20°C/1 year |
| Synonyms | SUPT3H; SPT3; Transcription initiation protein SPT3 homolog; SPT3-like protein |
| Observed Band | 50kD |
| Cell Pathway | Nucleus . |
| Tissue Specificity | Expressed in all tissues tested including pancreas, kidney, skeletal muscle, liver, lung, placenta, brain and heart. |
| Function | function:Probable transcriptional activator.,subunit:Component of the PCAF complex, at least composed of TADA2L/ADA2, SUPT3H, TADA3L/ADA3, TAF5L/PAF65-beta, TAF6L/PAF65-alpha, TAF10/TAFII30, TAF12/TAFII20, TAF9/TAFII31 and TRRAP. Associates with TAFII31 and GCN5L2. Component of the TFTC-HAT complex, at least composed of TAF5L, TAF6L, TADA3L, SUPT3H/SPT3, TAF2/TAFII150, TAF4/TAFII135, TAF5/TAFII100, GCN5L2/GCN5, TAF10 and TRRAP. Component of the STAGA transcription coactivator-HAT complex, at least composed of SUPT3H, GCN5L2, TAF5L, TAF6L, SUPT7L, TADA3L, TAD1L, TAF10, TAF12, TRRAP and TAF9. The STAGA core complex is associated with a subcomplex required for histone deubiquitylation composed of ATXN7L3, ENY2 and USP22.,tissue |

Nanjing BYabscience technology Co.,Ltd



specificity:Expressed in all tissues tested including pancreas, kidney, skeletal muscle, liver, lung, placenta, brain and heart.,

Background

function:Probable transcriptional activator.,subunit:Component of the PCAF complex, at least composed of TADA2L/ADA2, SUPT3H, TADA3L/ADA3, TAF5L/PAF65-beta, TAF6L/PAF65-alpha, TAF10/TAFII30, TAF12/TAFII20, TAF9/TAFII31 and TRRAP. Associates with TAFII31 and GCN5L2. Component of the TFTC-HAT complex, at least composed of TAF5L, TAF6L, TADA3L, SUPT3H/SPT3, TAF2/TAFII150, TAF4/TAFII135, TAF5/TAFII100, GCN5L2/GCN5, TAF10 and TRRAP. Component of the STAGA transcription coactivator-HAT complex, at least composed of SUPT3H, GCN5L2, TAF5L, TAF6L, SUPT7L, TADA3L, TAD1L, TAF10, TAF12, TRRAP and TAF9. The STAGA core complex is associated with a subcomplex required for histone deubiquitylation composed of ATXN7L3, ENY2 and USP22.,tissue specificity:Expressed in all tissues tested including pancreas, kidney, skeletal muscle, liver, lung, placenta, brain and heart.,

matters needing attention

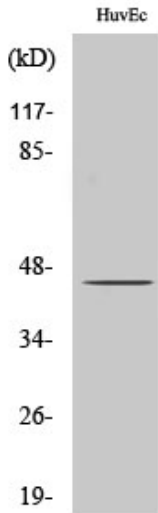
Avoid repeated freezing and thawing!

Usage suggestions

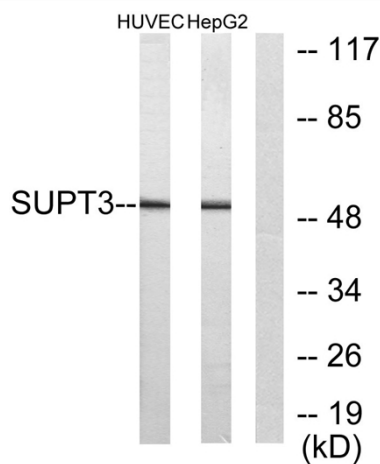
This product can be used in immunological reaction related experiments. For more information, please consult technical personnel.



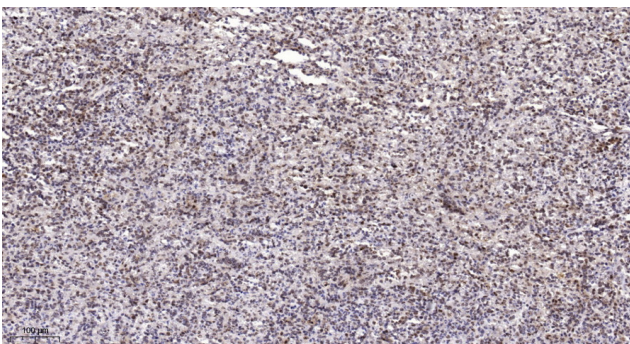
Products Images



Western Blot analysis of various cells using SPT3 Polyclonal Antibody cells nucleus extracted by Minute TM Cytoplasmic and Nuclear Fractionation kit (SC-003, Inventibiotech, MN, USA).



Western blot analysis of lysates from HUVEC and HepG2 cells, using SUPT3H Antibody. The lane on the right is blocked with the synthesized peptide.



Immunohistochemical analysis of paraffin-embedded human spleen. 1, Antibody was diluted at 1:200(4° overnight). 2, Tris-EDTA, pH9.0 was used for antigen retrieval. 3, Secondary antibody was diluted at 1:200(room temperature, 45min).