



# Spi-C Polyclonal Antibody

<b>Catalog No</b>	BYab-02036
<b>Isotype</b>	IgG
<b>Reactivity</b>	Human;Rat;Mouse;
<b>Applications</b>	WB;ELISA;IHC
<b>Gene Name</b>	SPIC
<b>Protein Name</b>	Transcription factor Spi-C
<b>Immunogen</b>	The antiserum was produced against synthesized peptide derived from human SPIC. AA range:131-180
<b>Specificity</b>	Spi-C Polyclonal Antibody detects endogenous levels of Spi-C protein.
<b>Formulation</b>	Liquid in PBS containing 50% glycerol, 0.5% BSA and 0.02% sodium azide.
<b>Source</b>	Polyclonal, Rabbit,IgG
<b>Purification</b>	The antibody was affinity-purified from rabbit antiserum by affinity-chromatography using epitope-specific immunogen.
<b>Dilution</b>	WB 1:500-2000;IHC-p 1:50-300; ELISA 2000-20000
<b>Concentration</b>	1 mg/ml
<b>Purity</b>	≥90%
<b>Storage Stability</b>	-20°C/1 year
<b>Synonyms</b>	SPIC; Transcription factor Spi-C
<b>Observed Band</b>	29kD
<b>Cell Pathway</b>	Nucleus .
<b>Tissue Specificity</b>	Preferentially detected in fetal and adult spleen, lymph nodes and at lower levels in bone marrow and fetal liver.
<b>Function</b>	function:Probable transcription factor that binds to the PU-box, a purine-rich DNA sequence (5'-GAGGA[AT]-3') that can act as a lymphoid-specific enhancer.,similarity:Belongs to the ETS family.,similarity:Contains 1 ETS DNA-binding domain.,subunit:binds DNA as a monomer.,tissue specificity:Preferentially detected in fetal and adult spleen, lymph nodes and at lower levels in bone marrow and fetal liver.,
<b>Background</b>	The protein encoded by this gene regulates the development of red pulp macrophages, which are necessary for iron homeostasis and the recycling of red blood cells. [provided by RefSeq, Aug 2016],

Nanjing BYabscience technology Co.,Ltd



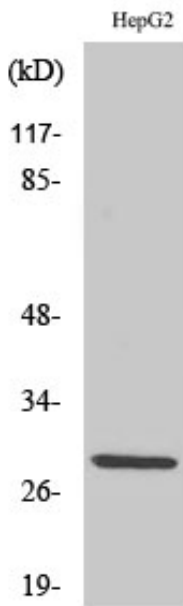
**matters needing attention**

Avoid repeated freezing and thawing!

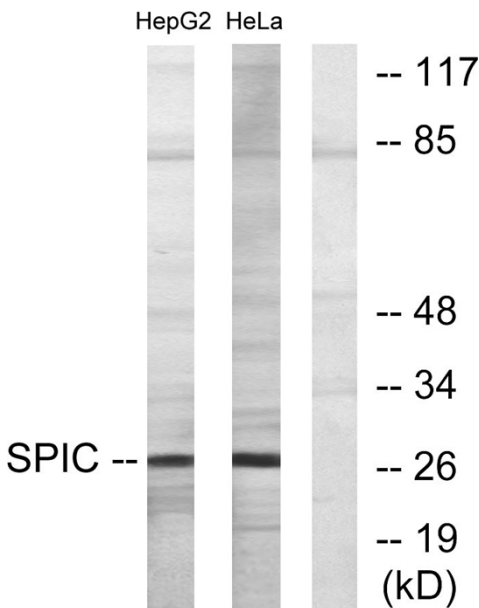
**Usage suggestions**

This product can be used in immunological reaction related experiments. For more information, please consult technical personnel.

**Products Images**

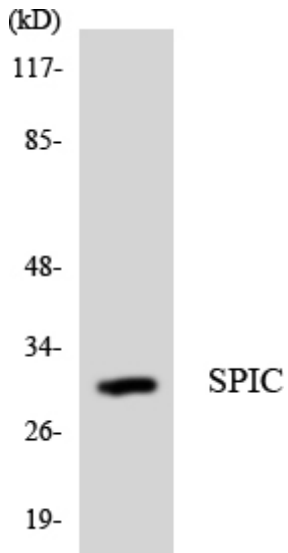


Western Blot analysis of various cells using Spi-C Polyclonal Antibody cells nucleus extracted by Minute TM Cytoplasmic and Nuclear Fractionation kit (SC-003, Inventbiotech, MN, USA).

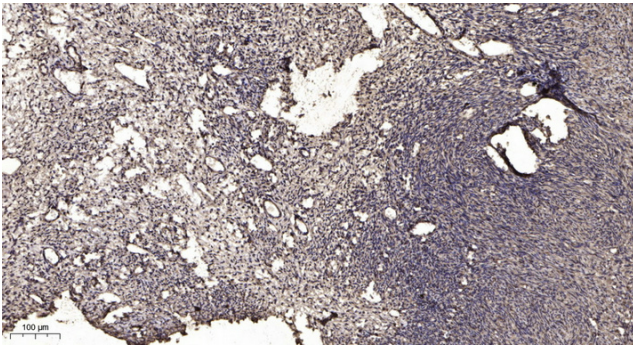


Western blot analysis of lysates from HepG2 and HeLa cells, using SPIC Antibody. The lane on the right is blocked with the synthesized peptide.

**Nanjing BYabscience technology Co.,Ltd**



Western blot analysis of the lysates from Jurkat cells using SPIC antibody.



Immunohistochemical analysis of paraffin-embedded human oophoroma. 1, Antibody was diluted at 1:200(4° overnight). 2, Tris-EDTA, pH9.0 was used for antigen retrieval. 3, Secondary antibody was diluted at 1:200(room temperature, 45min).